

EXPLANATORY PLAN OF STATUTORY RIGHT OF WAY OVER PART OF LOT 2, EXCEPT: FIRSTLY: PART IN PLAN 19288, SECONDLY: PART DEDICATED ROAD ON PLAN BCP27830, DISTRICT LOT 343, CARIBOO DISTRICT, PLAN 18815.

PLAN EPP104569

PURSUANT TO SECTION 113 OF THE LAND TITLE ACT.

THIS PLAN LIES WITHIN INTEGRATED SURVEY AREA
No. 39 PRINCE GEORGE, BC, NAD83 (CSRS) 2002.0

BCGS 93G.097



THE INTENDED PLOT SIZE OF THIS PLAN IS 432mm IN WIDTH BY 280mm IN HEIGHT (B SIZE) WHEN PLOTTED AT A SCALE OF 1:1000.

ALL DISTANCES ARE IN METRES AND DECIMALS THEREOF.

BEARINGS ARE ASTRONOMIC DERIVED FROM PLAN 18815.

THE UTM COORDINATES AND ESTIMATED ABSOLUTE ACCURACY ACHIEVED HAVE BEEN DERIVED FROM NATURAL RESOURCES CANADA'S PRECISE POINT POSITIONING SERVICE.

THIS PLAN SHOWS HORIZONTAL GROUND-LEVEL DISTANCES UNLESS OTHERWISE SPECIFIED.

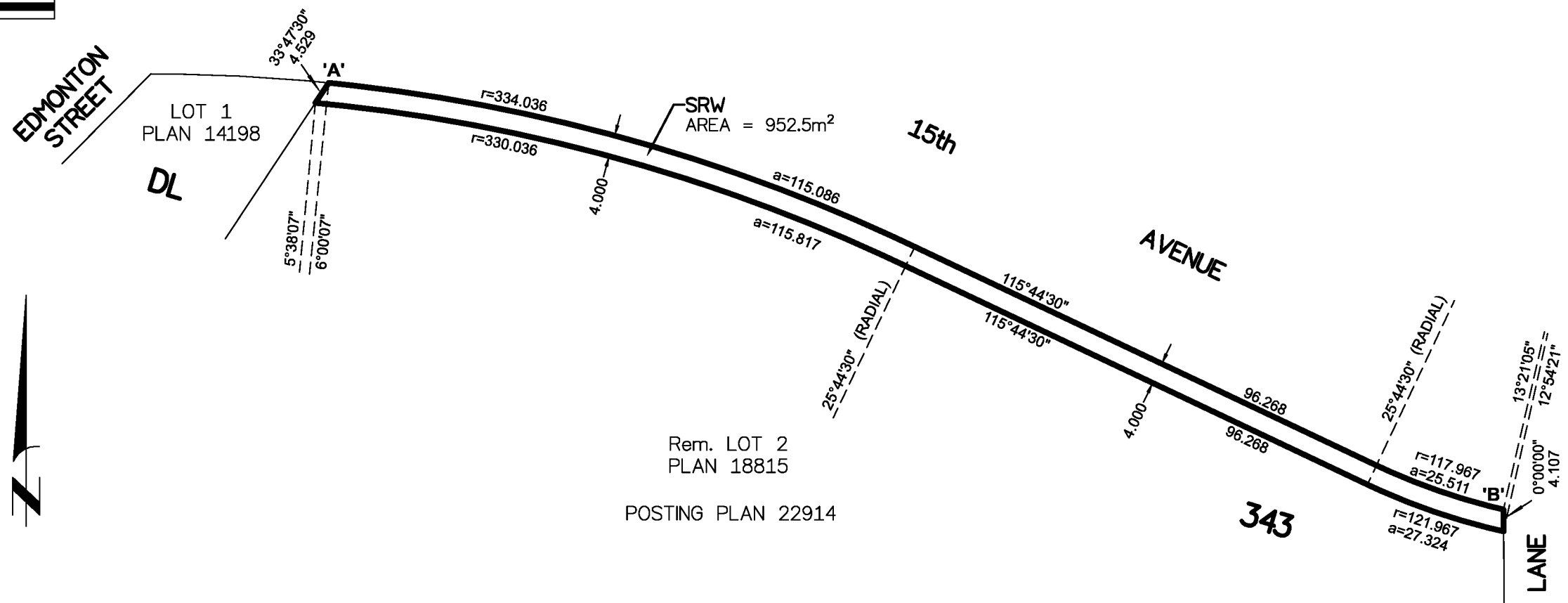
LEGEND

SYMBOLS	DESCRIPTION
EAA	ESTIMATED ABSOLUTE ACCURACY

GEOREFERENCING POSITIONS UTM COORDINATES, ZONE 10, NAD 83 (CSRS), 2002.0			
STATION	NORTHING	EASTING	EAA
'A'	5973557.88	515545.92	0.05
'B'	5973477.57	515767.12	0.05

SHAUNA C. GOERTZEN, BCLS 798
ON THE 14th DAY OF AUGUST, 2020

THIS PLAN LIES WITHIN THE
REGIONAL DISTRICT OF FRASER-FORT GEORGE.



McElhanney
McELHANNEY ASSOCIATES
LAND SURVEYING LTD.
Suite 12
556 North Nechako Road
Prince George BC
Canada V2K 1A1
Tel 250 561 2229

File No. 2341-6575-27-SRW