

REFERENCE PLAN OF CONSOLIDATION OF  
 PARCEL A (P30012), PARCEL C (P30015) OF BLOCK 61,  
 PLAN 902, AND CLOSED ROAD, PLAN EPP103617,  
 ALL IN DISTRICT LOT 629, CARIBOO DISTRICT.

PLAN EPP103618

PURSUANT TO SECTION 100(1)(b) OF THE LAND TITLE ACT.

THIS PLAN LIES WITHIN INTEGRATED SURVEY AREA  
 No. 39 PRINCE GEORGE, BC, NAD83 (CSRS) 4.0.0.BC.1

BCGS 93G.097



THE INTENDED PLOT SIZE OF THIS PLAN IS 560mm IN WIDTH BY 432mm IN HEIGHT (C SIZE) WHEN PLOTTED AT A SCALE OF 1:750.

ALL DISTANCES ARE IN METRES AND DECIMALS THEREOF.

GRID BEARINGS ARE DERIVED FROM OBSERVATIONS BETWEEN GEODETIC CONTROL MONUMENTS 85H1287 AND 85H1257.

THE UTM COORDINATES AND ESTIMATED ABSOLUTE ACCURACY ACHIEVED HAVE BEEN DERIVED FROM MASCOT PUBLISHED COORDINATES AND STANDARD DEVIATIONS FOR GEODETIC CONTROL MONUMENT 85H1257.

THIS PLAN SHOWS HORIZONTAL GROUND-LEVEL DISTANCES UNLESS OTHERWISE SPECIFIED. TO COMPUTE GRID DISTANCES, MULTIPLY GROUND-LEVEL DISTANCES BY THE AVERAGE COMBINED FACTOR OF 0.9995004 WHICH HAS BEEN DERIVED FROM GEODETIC CONTROL MONUMENT 85H1287.

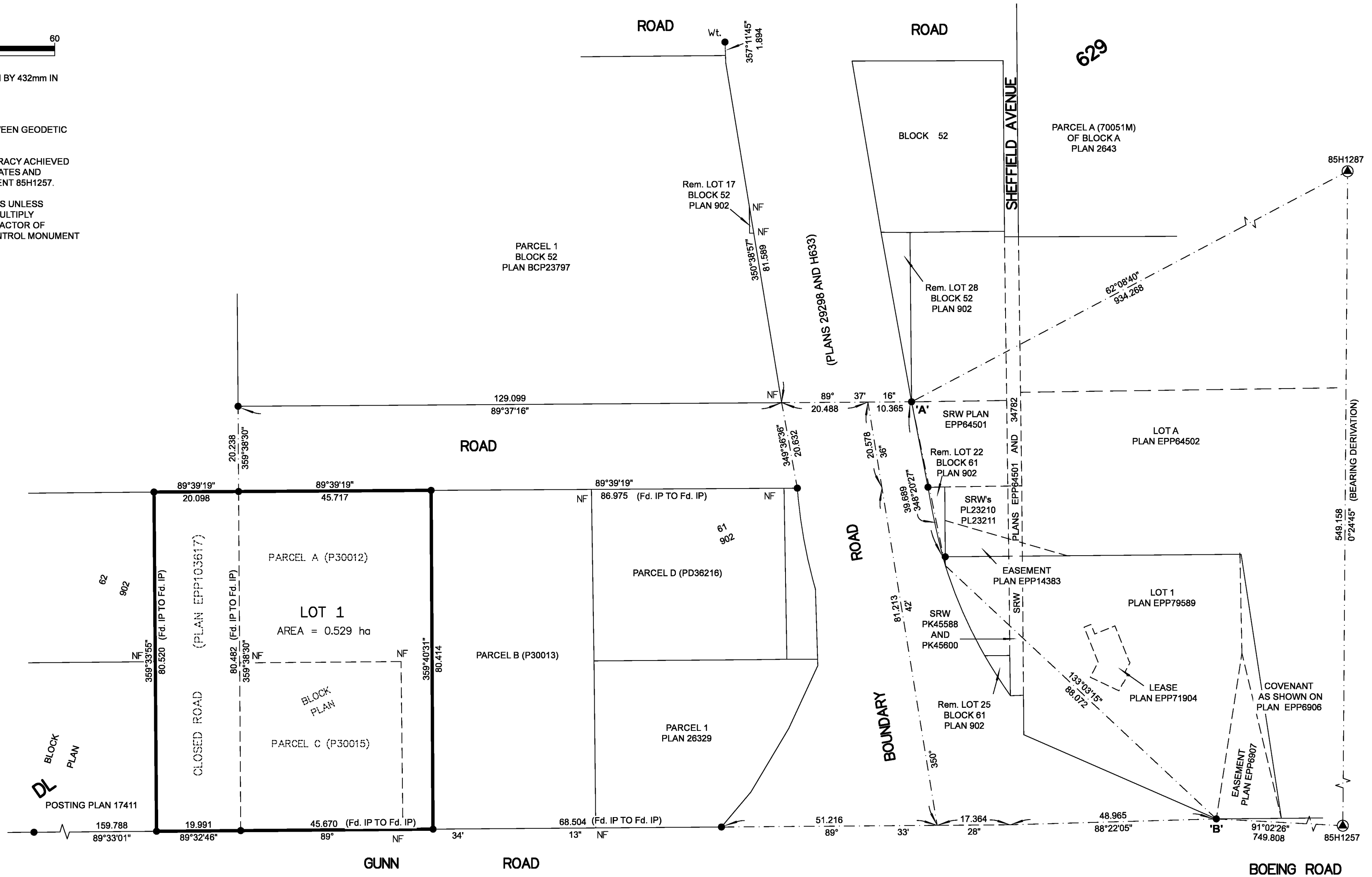
NOTE:  
 THIS PLAN SHOWS ONE OR MORE WITNESS POSTS WHICH ARE NOT SET ON THE TRUE CORNER(S).

SOME POSTS AND LINES ARE EXAGGERATED FOR CLARITY.

**LEGEND**

SYMBOLS	DESCRIPTION
FOUND PLACED	
●	CONTROL MONUMENT
●	STANDARD IRON POST
EAA	ESTIMATED ABSOLUTE ACCURACY

GEOREFERENCING POSITIONS UTM COORDINATES, ZONE 10, NAD 83 (CSRS), 4.0.0.BC.1			
STATION	NORTHING	EASTING	EAA
Fd. IP 'A'	5972764.11	521144.52	0.11
Fd. IP 'B'	5972665.17	521216.86	0.11



THE FIELD SURVEY REPRESENTED BY THIS PLAN WAS COMPLETED  
 ON THE 23rd DAY OF JUNE, 2020  
 SHAUNA C. GOERTZEN, BCLS 798

THIS PLAN LIES WITHIN THE REGIONAL DISTRICT OF FRASER-FORT GEORGE.

**McElhanney**  
 McELHANNEY ASSOCIATES  
 LAND SURVEYING LTD.  
 Suite 12  
 556 North Nechako Road  
 Prince George BC  
 Canada V2K 1A1  
 Tel 250 561 2229

File No. 2341-6747-COIN

Filed Pg. EPP103618 EPP103618-159-475-4354 RCVD-2021-02-11 RQST-2021-03-18 03:04 Prince George, City of