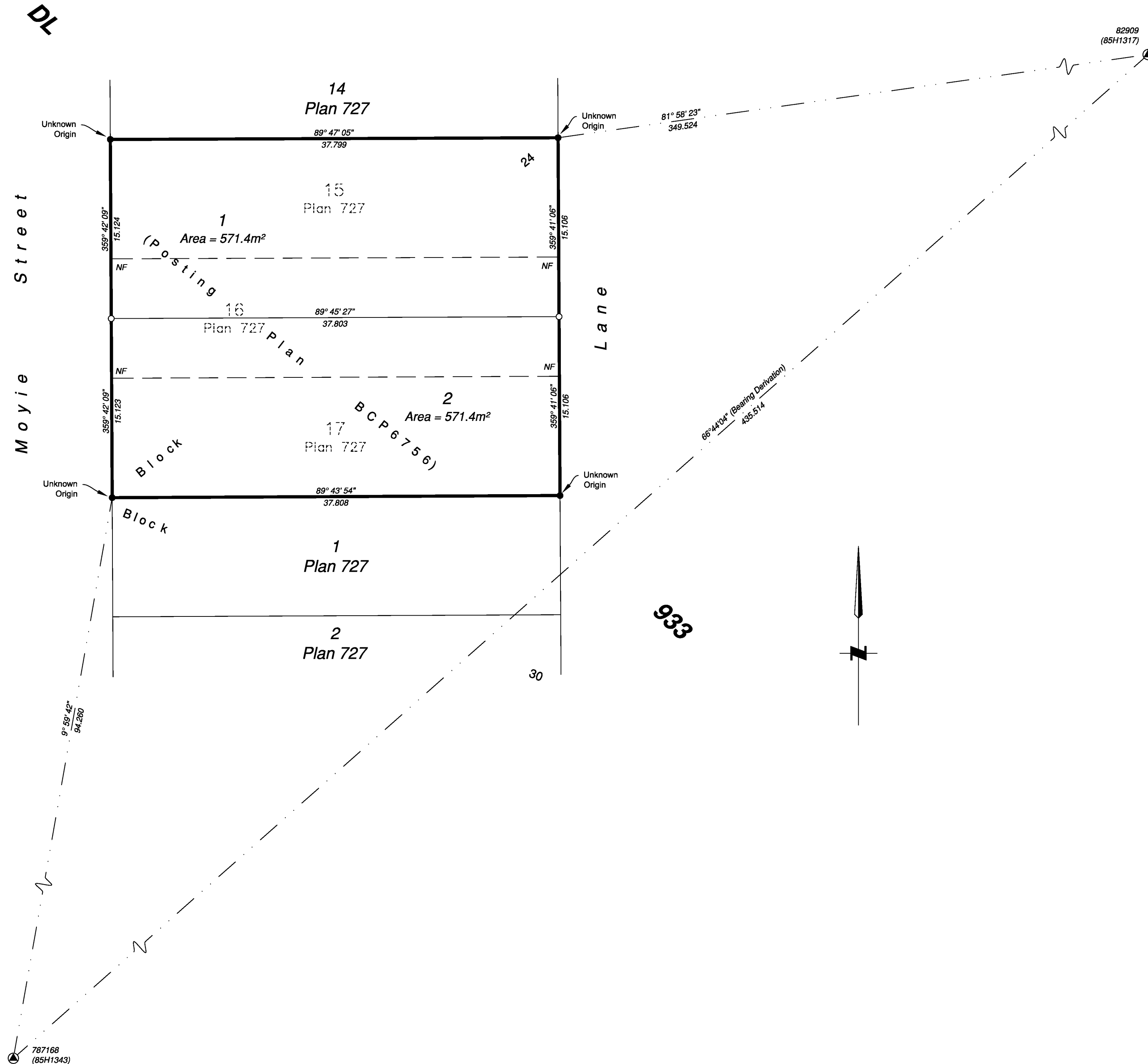


PLAN EPP103349



Subdivision Plan of Lots 15, 16 & 17, Block 24, District Lot 933, Cariboo District, Plan 727.

Pursuant to Section 67 of the Land Title Act

Integrated survey area No. 39 Prince George, BC, NAD83 (CSRS) 4.0.0.BC.1

BCGS 93G.087



The intended plot size of this plan is 559mm in width by 432mm in height (C size) when plotted at a scale of 1:250.

All distances are in metres and decimals thereof.

Grid bearings are derived from observations between geodetic control monuments 787168(85H1343) and 82909(85H1317) and are referred to the central meridian of UTM Zone10 North (123° west longitude).

The UTM coordinates and estimated absolute accuracy achieved have been derived from MASCOT published coordinates and standard deviations for geodetic control monuments 787168(85H1343) and 82909(85H1317).

This plan shows horizontal ground-level distances unless otherwise specified. To compute grid distances, multiply ground-level distances by the average combined factor of 0.9995140 which has been derived from control monument 787168(85H1343).

Note:
Wooden Guard Stakes set at all Placed and Found Iron Posts.

Legend

Symbols	Description
Found Placed	
Control Monument	Control Monument
Standard Iron Post	Standard Iron Post
CSF	Combined Scale Factor
EAA	Estimated Absolute Accuracy

Georeferencing Positions				
UTM Coordinates, Zone 10, NAD 83 (CSRS), 4.0.0.BC.1				
Station	Northing	Easting	EAA	CSF
787168	5971674.33	516589.84	0.05	0.9995140
82909	5971846.27	516989.74	0.05	0.9995163

CPG File No.: SD100626
This plan lies within the jurisdiction of the Approving Officer for the City of Prince George.

The field survey represented by this plan was completed on the 10th day of June, 2020.

Scott A. Maguire, BCLS 903

This plan lies within the Regional District of Fraser-Fort George

File: 20067-SD
KOEHLER LAND SURVEYING INC.
1698 Lyon Street South
Prince George, BC V2N 1T3
Tel: (250) 614-9703