

PLAN EPP103289

**Reference Plan over parts of
Lots 42 to 47, Inclusive, District
Lot 2014, Cariboo District, Plan
EPP96993**

PURSUANT TO SECTION 99(1)(e) OF THE LAND TITLE ACT.
FOR EASEMENT PURPOSES

Integrated survey area No. 39 Prince George, BC,
NAD83 (CSRS) 4.0.0.BC.1

BCGS 93G.087



The intended plot size of this plan is 432mm in width by 559mm in height (C size)
when plotted at a scale of 1:400.

All distances are in metres and decimals thereof.

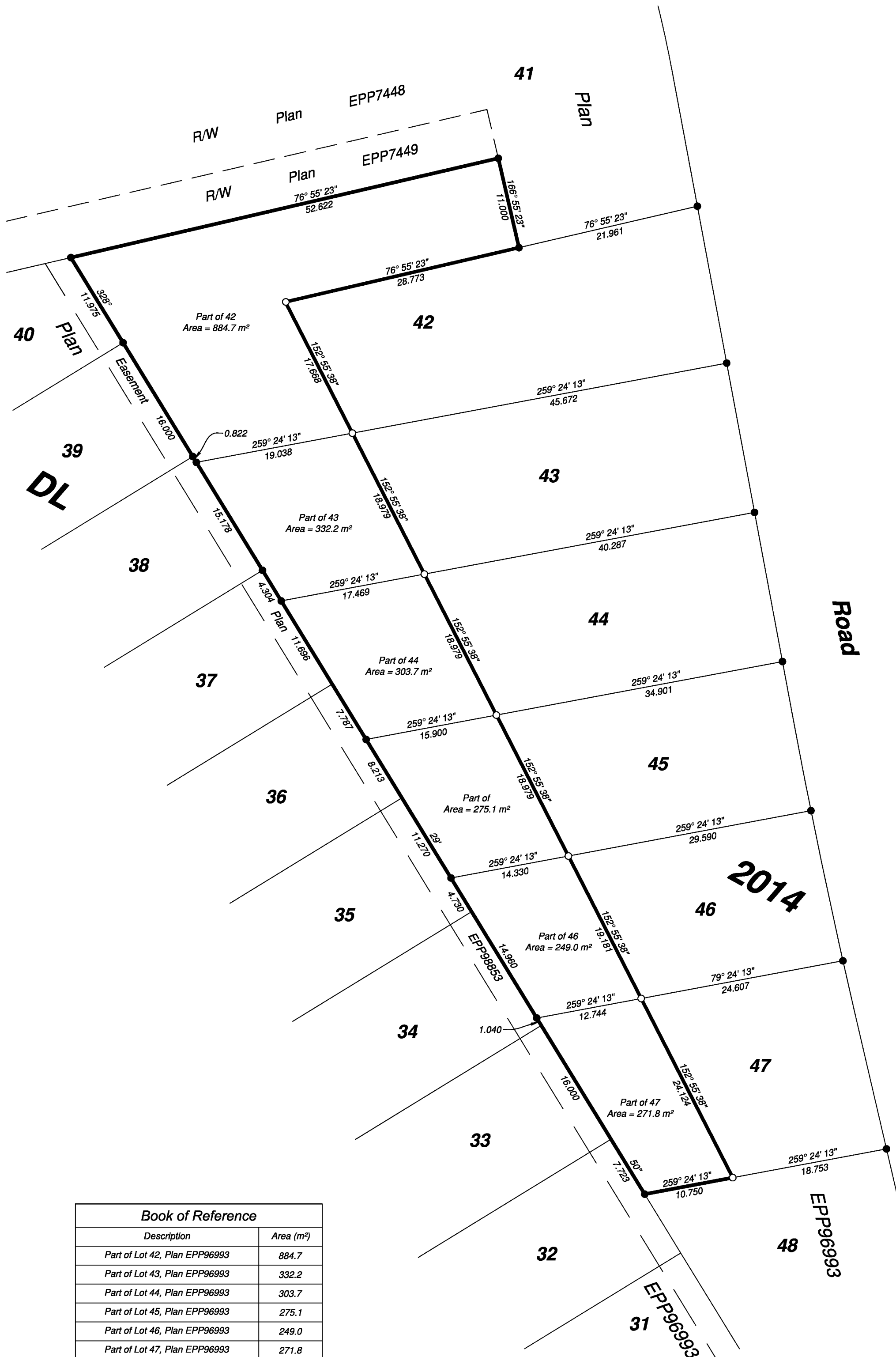
Grid bearings are derived from Plan EPP96993 and are referred to the
central meridian of UTM Zone 10 (123° west longitude).

The UTM coordinates and estimated absolute accuracy achieved are
derived from ties to standard iron posts set on Plan EPP96993.

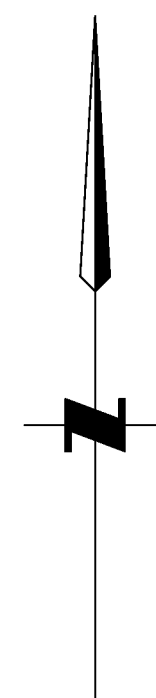
This plan shows horizontal ground-level distances unless otherwise
specified. To compute grid distances, multiply ground-level distances by
the average combined factor of 0.999514. The average combined factor
has been determined based on an ellipsoidal elevation of 570.7 metres.

Legend

Symbols	Description
Found	Placed
●	○
	Standard Iron Post



Book of Reference	
Description	Area (m²)
Part of Lot 42, Plan EPP96993	884.7
Part of Lot 43, Plan EPP96993	332.2
Part of Lot 44, Plan EPP96993	303.7
Part of Lot 45, Plan EPP96993	275.1
Part of Lot 46, Plan EPP96993	249.0
Part of Lot 47, Plan EPP96993	271.8
Total Area =	0.232 ha



The field survey represented by this plan was
completed on the 15th day of June, 2020.

Albert Koehler, BCLS 974

This plan lies within the Regional District of Fraser-Fort George

File: 19097-EAS

KOEHLER LAND SURVEYING INC.
1698 Lyon Street South
Prince George, BC V2N 1T3
Tel: (250) 614-9703