

# REFERENCE PLAN

OF EASEMENT OVER PART OF LOT 10 BLOCK 122 DISTRICT LOT 343 CARIBOO DISTRICT  
PLAN 1268

PLAN EPP102565

Pursuant to Section 99(1)(e) of the Land Title Act.  
BCGS 93G.097



The intended plot size of this plan is 560mm in width by 432mm in height (C size) when plotted at a scale of 1:500.

Distances are horizontal ground level distances in metres and decimals thereof unless otherwise denoted.

**LEGEND**

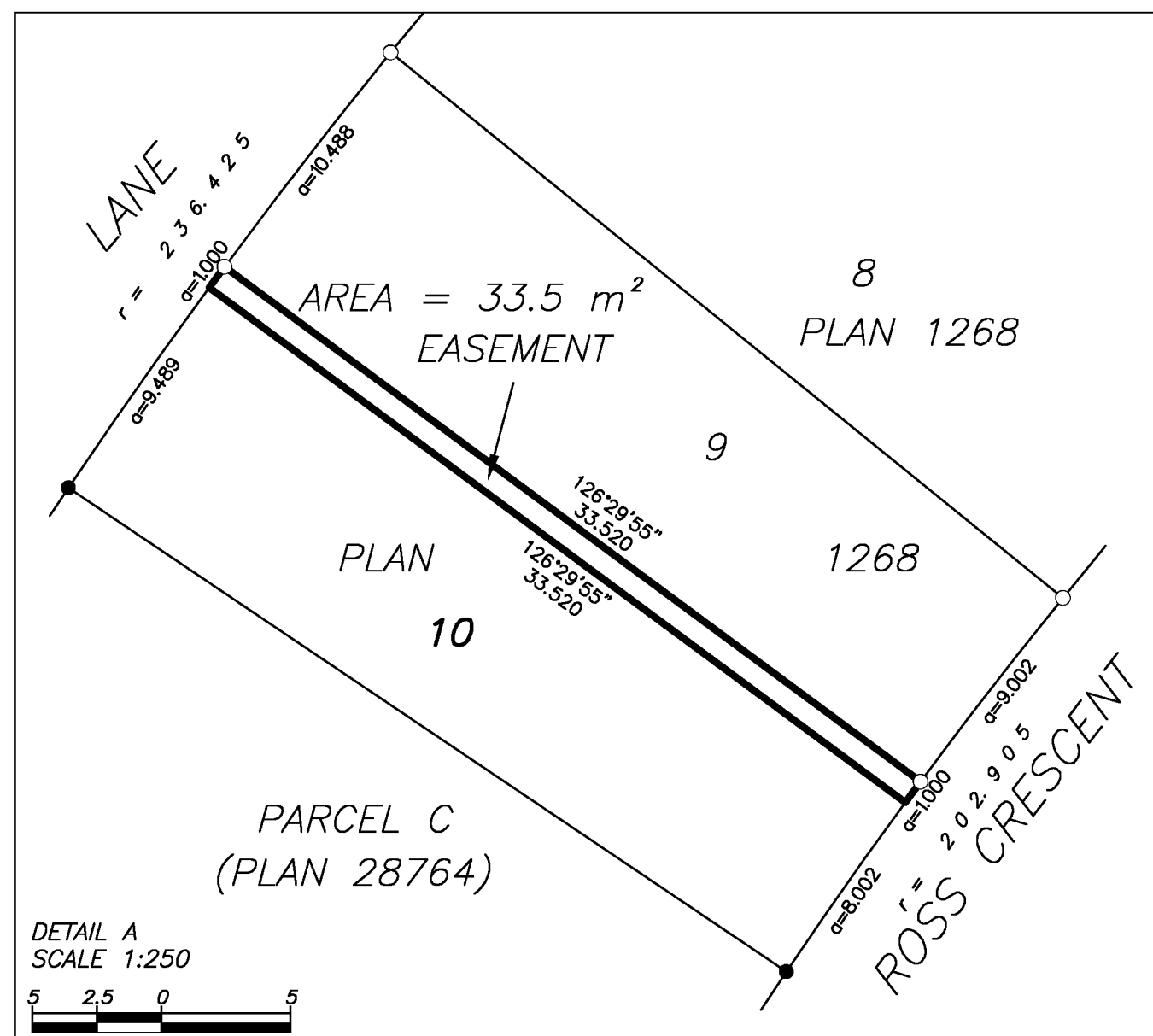
Bearings are NAD83 (CSRS) Grid and are derived from Observations between Geodetic Control Monuments 85H1067 and 85H1054. of UTM Zone 10 North.

The UTM Coordinates and Estimated Absolute Accuracy achieved are derived from Mascot Published Coordinates and Standard Deviations for Geodetic Control Monument 85H1067.

This plan shows horizontal ground level distances, unless otherwise specified. To compute grid distances, multiply ground level distances by the average combined factor of 0.9995133. The average combined factor has been determined based on an Ellipsoidal Elevation of Control Monuments 85H1067 and 85H1054.

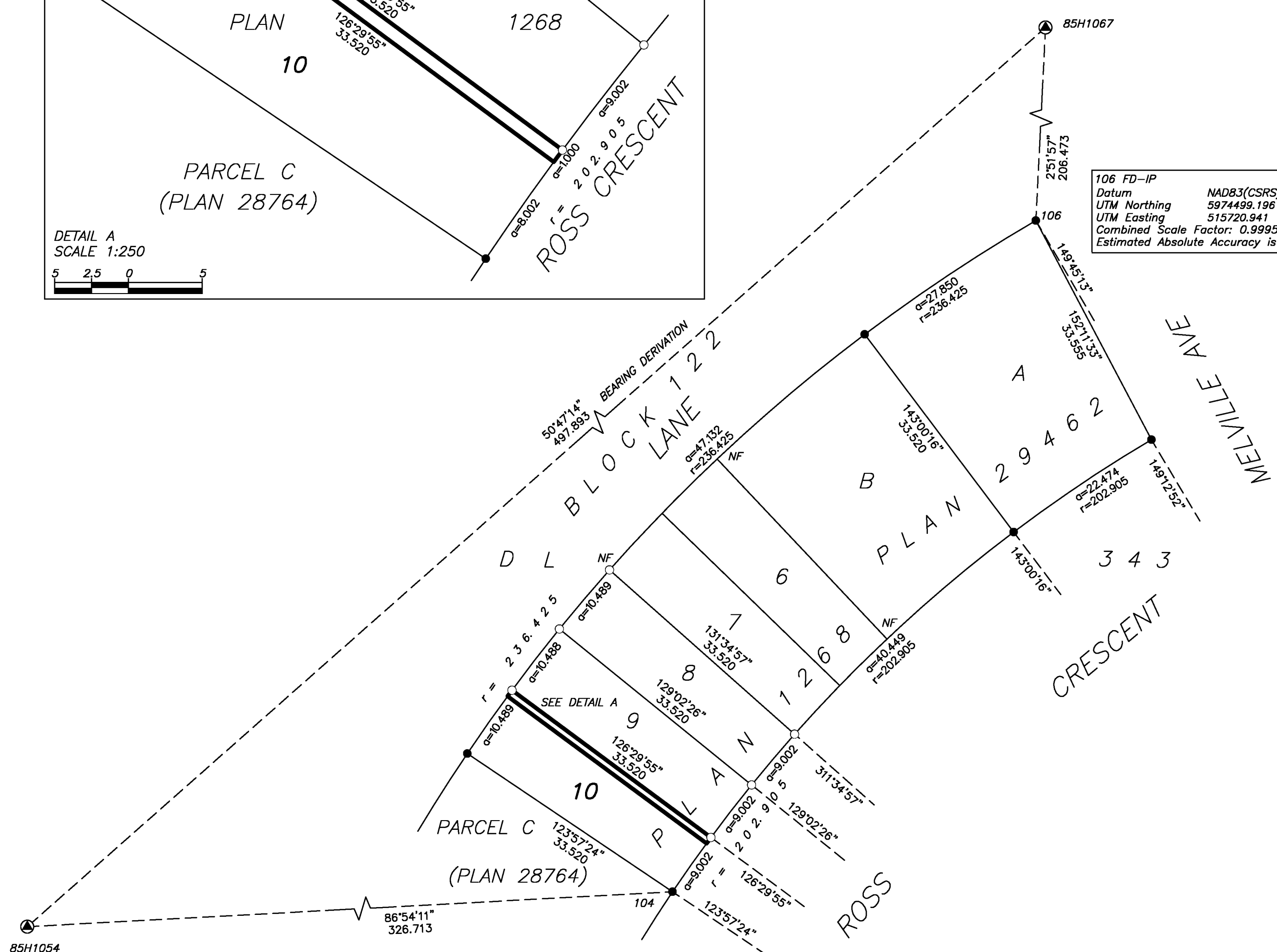
Integrated Survey Area No.39 Prince George, BC  
NAD83 (CSRS) 4.0.0.BC.1

Note: Some Posts and Lines are Exaggerated for Clarity.



**LEGEND**

- denotes control monument found
- denotes standard iron post found
- denotes standard iron post placed



106 FD-IP	
Datum	NAD83(CSRS) 4.0.0.BC.1, UTM Zone 10
UTM Northing	5974499.196
UTM Easting	515720.941
Combined Scale Factor:	0.9995136
Estimated Absolute Accuracy is	0.10 metres

104 FD-IP	
Datum	NAD83(CSRS) 4.0.0.BC.1, UTM Zone 10
UTM Northing	5974408.336
UTM Easting	515671.755
Combined Scale Factor:	0.9995136
Estimated Absolute Accuracy is	0.10 metres

This plan lies within the  
Regional District of Fraser-Fort George

The field survey represented by this plan was completed  
on the 12th day of May, 2020.  
MANJIT SANGHA, B.C.L.S. (939)

**SANGHA GEOMATICS &  
LAND SURVEYING INC.**  
PO Box 1845 Vanderhoof, BC  
PROJECT REFERENCE-DRAWING NO.  
2018135-00