

REFERENCE PLAN OF CONSOLIDATION OF CLOSED ROAD, PLAN EPP101604, AND LOT 3, PLAN EPP53690, ALL IN DISTRICT LOTS 4221 AND 4376, CARIBOO DISTRICT.

PURSUANT TO SECTION 100(1)(b) OF THE LAND TITLE ACT.

THIS PLAN LIES WITHIN INTEGRATED SURVEY AREA No. 39 PRINCE GEORGE, BC, NAD83 (CSRS) 4.0.0.BC.1 BCGS 93G.097



THE INTENDED PLOT SIZE OF THIS PLAN IS 864mm IN WIDTH BY 560mm IN HEIGHT (D SIZE) WHEN PLOTTED AT A SCALE OF 1:750.

ALL DISTANCES ARE IN METRES AND DECIMALS THEREOF. GRID BEARINGS ARE DERIVED FROM OBSERVATIONS BETWEEN GEODETIC CONTROL MONUMENTS 86H1775 AND 86H1759.

THE UTM COORDINATES AND ESTIMATED ABSOLUTE ACCURACY ACHIEVED HAVE BEEN DERIVED FROM MASCOT PUBLISHED COORDINATES AND STANDARD DEVIATIONS FOR GEODETIC CONTROL MONUMENT 86H1775.

THIS PLAN SHOWS HORIZONTAL GROUND-LEVEL DISTANCES UNLESS OTHERWISE SPECIFIED. TO COMPUTE GRID DISTANCES, MULTIPLY GROUND-LEVEL DISTANCES BY THE COMBINED FACTOR OF 0.9995090 WHICH HAS BEEN DERIVED FROM CONTROL MONUMENT 86H1775.

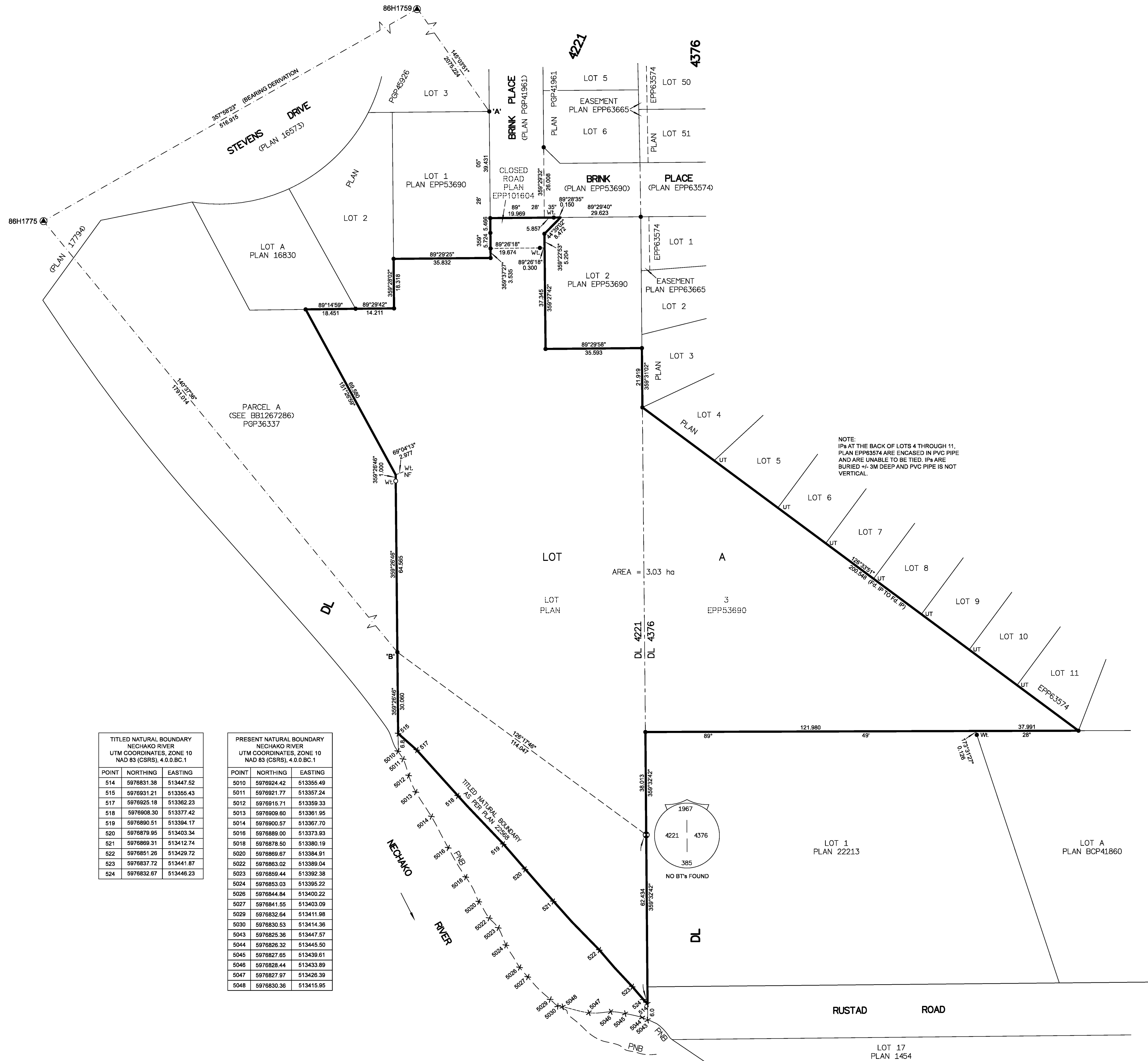
NOTE: THIS PLAN SHOWS ONE OR MORE WITNESS POSTS WHICH ARE NOT SET ON THE TRUE CORNER(S).

SOME POSTS AND LINES ARE EXAGGERATED FOR CLARITY.

LEGEND

SYMBOLS	DESCRIPTION
FOUND PLACED	
⊕	CONTROL MONUMENT
⊙	STANDARD CAPPED POST
● ○	STANDARD IRON POST
BT	BEARING TREE
UT	UNABLE TO TIE
⊕	TITLED NATURAL BOUNDARY AND PRESENT NATURAL BOUNDARY
EAA	ESTIMATED ABSOLUTE ACCURACY

GEOREFERENCING POSITIONS			
UTM COORDINATES, ZONE 10, NAD 83 (CSRS), 4.0.0.BC.1			
STATION	NORTHING	EASTING	EAA
Fd. IP 'A'	5977180.99	513389.07	0.09
Fd. IP 'B'	5976961.26	513355.14	0.09



TITLED NATURAL BOUNDARY			
NECHAKO RIVER			
UTM COORDINATES, ZONE 10 NAD 83 (CSRS), 4.0.0.BC.1			
POINT	NORTHING	EASTING	
514	5976831.38	513447.52	
515	5976931.21	513355.43	
517	5976925.18	513382.23	
518	5976908.30	513377.42	
519	5976890.51	513384.17	
520	5976879.95	513403.34	
521	5976869.31	513412.74	
522	5976851.26	513429.72	
523	5976837.72	513441.87	
524	5976832.87	513446.23	

PRESENT NATURAL BOUNDARY			
NECHAKO RIVER			
UTM COORDINATES, ZONE 10 NAD 83 (CSRS), 4.0.0.BC.1			
POINT	NORTHING	EASTING	
5010	5976924.42	513355.49	
5011	5976921.77	513357.24	
5012	5976915.71	513359.33	
5013	5976909.60	513361.95	
5014	5976900.57	513367.70	
5016	5976889.00	513373.93	
5018	5976878.50	513380.19	
5020	5976869.67	513384.91	
5022	5976863.02	513389.04	
5023	5976859.44	513392.38	
5024	5976853.03	513395.22	
5026	5976844.84	513400.22	
5027	5976841.55	513403.09	
5029	5976832.64	513411.98	
5030	5976830.53	513414.36	
5043	5976825.36	513447.57	
5044	5976826.32	513445.50	
5046	5976827.65	513439.61	
5046	5976828.44	513433.89	
5047	5976827.97	513426.39	
5048	5976830.36	513415.95	

LOT 1 PLAN 22213

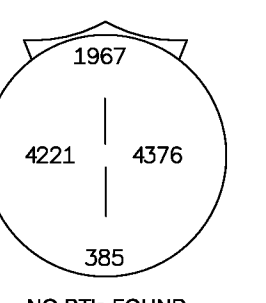
LOT A PLAN BCP41860

RUSTAD ROAD

LOT 17 PLAN 1454

NOTE: IPs AT THE BACK OF LOTS 4 THROUGH 11, PLAN EPP63574 ARE ENCASED IN PVC PIPE AND ARE UNABLE TO BE TIED. IPs ARE BURIED +/- 3M DEEP AND PVC PIPE IS NOT VERTICAL.

LOT AREA = 3.03 ha



THE FIELD SURVEY REPRESENTED BY THIS PLAN WAS COMPLETED ON THE 27th DAY OF MARCH, 2020 SHAUNA C. GOERTZEN, BCLS 798 THIS PLAN LIES WITHIN THE REGIONAL DISTRICT OF FRASER-FORT GEORGE.

McElhanney
 McELHANNEY ASSOCIATES
 LAND SURVEYING LTD.
 Suite 12
 556 North Nechako Road
 Prince George BC
 Canada V2K 1A1
 Tel 250 561 2229
 File No. 2341-6708-CON