

**REFERENCE PLAN TO ACCOMPANY BY-LAW
NUMBER 9107, 2020 (PRINCE GEORGE)
TO CLOSE A PORTION OF ROAD SHOWN
DEDICATED ON PLANS EPP53690 AND
PGP41961, ALL IN DISTRICT LOT 4221,
CARIBOO DISTRICT.**

PLAN EPP101604

PURSUANT TO SECTION 120 OF THE LAND TITLE ACT
AND SECTION 40 OF THE COMMUNITY CHARTER.

THIS PLAN LIES WITHIN INTEGRATED SURVEY AREA
No. 39 PRINCE GEORGE, BC, NAD83 (CSRS) 4.0.0.BC.1

BCGS 93G.097



THE INTENDED PLOT SIZE OF THIS PLAN IS 280mm IN WIDTH
BY 432mm IN HEIGHT (B SIZE) WHEN PLOTTED AT A SCALE
OF 1:400.

ALL DISTANCES ARE IN METRES AND DECIMALS
THEREOF.

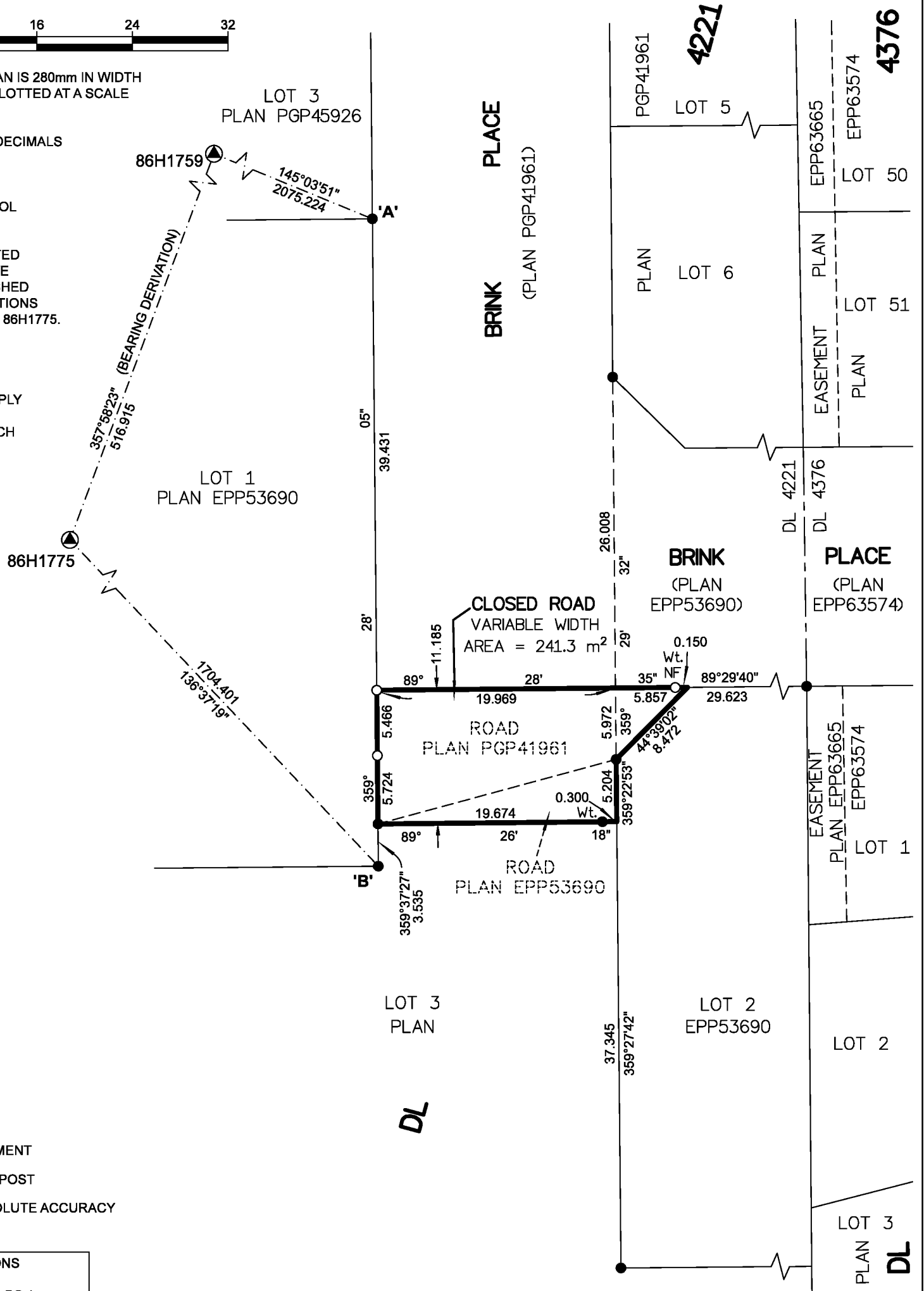
GRID BEARINGS ARE DERIVED FROM
OBSERVATIONS TO GEODETIC CONTROL
MONUMENT 86H1775 AND 86H1759.

THE UTM COORDINATES AND ESTIMATED
ABSOLUTE ACCURACY ACHIEVED HAVE
BEEN DERIVED FROM MASCOT PUBLISHED
COORDINATES AND STANDARD DEVIATIONS
FOR GEODETIC CONTROL MONUMENT 86H1775.

THIS PLAN SHOWS HORIZONTAL
GROUND-LEVEL DISTANCES UNLESS
OTHERWISE SPECIFIED.
TO COMPUTE GRID DISTANCES, MULTIPLY
GROUND-LEVEL DISTANCES BY THE
COMBINED FACTOR OF 0.9995090 WHICH
HAS BEEN DERIVED FROM GEODETIC
CONTROL MONUMENT 86H1775.

NOTE:
THIS PLAN SHOWS ONE OR MORE
WITNESS POSTS WHICH ARE NOT
SET ON THE TRUE CORNER(S).

SOME POSTS AND LINES ARE
EXAGGERATED FOR CLARITY.



LEGEND

SYMBOLS		DESCRIPTION
FOUND	PLACED	
		CONTROL MONUMENT
		STANDARD IRON POST
EAA		ESTIMATED ABSOLUTE ACCURACY

GEOREFERENCING POSITIONS UTM COORDINATES, ZONE 10, NAD 83 (CSRS), 4.0.0.BC.1			
STATION	NORTHING	EASTING	EAA
Fd. IP 'A'	5977160.99	513389.07	0.09
Fd. IP 'B'	5977106.87	513389.56	0.09

THE FIELD SURVEY REPRESENTED BY THIS PLAN WAS COMPLETED
ON THE 27th DAY OF MARCH, 2020
SHAUNA C. GOERTZEN, BCLS 798

THIS PLAN LIES WITHIN THE REGIONAL DISTRICT OF FRASER-FORT GEORGE.

McElhanney
McELHANNEY ASSOCIATES
LAND SURVEYING LTD.
Suite 12
556 North Nechako Road
Prince George BC
Canada V2K 1A1
Tel 250 561 2229

File No. 2341-6708-RC