

Key Plan
(Not to Scale)

Reference Plan of Part of District Lot 2014, Cariboo District, Except Plans 29514, EPP5390, EPP16518, and EPP53901

Pursuant to Section 89(1)(e) of the Land Title Act

Integrated survey area No. 39 Prince George, BC, NAD83 (CSRS) 4.0.0.BC.1
BCGS 930.087

The intended plot size of this plan is 846mm in width by 1120mm in height (E size) when plotted at a scale of 1:400.
All distances are in metres and decimals thereof.

Old bearings are derived from differential dual frequency GNSS observations and are referred to the control monolith of UTM Zone 10 (12° west longitude).
The UTM coordinates and estimated absolute accuracy achieved are derived from dual frequency GNSS observations processed using Natural Resources Canada's precise point positioning service.

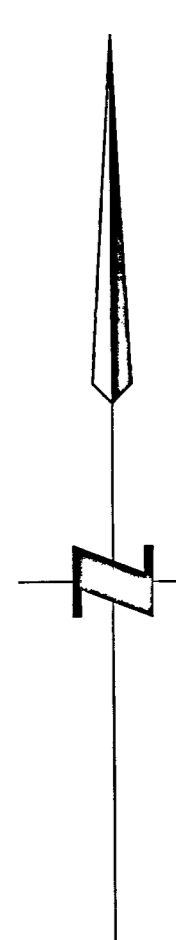
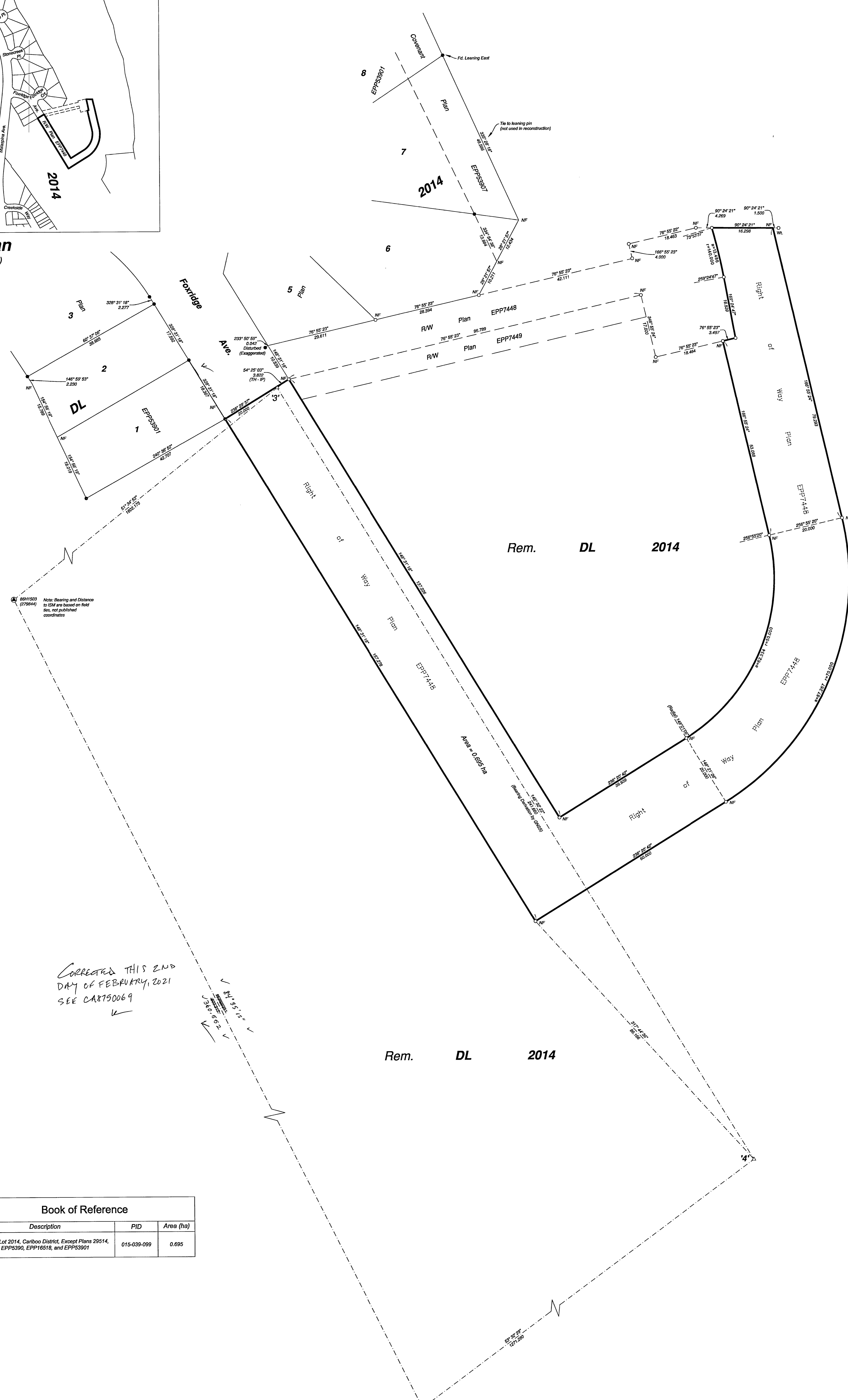
This plan shows horizontal ground-level distances, unless otherwise specified. To compare plot distances, multiply ground-level distances by the average combined factor of 0.99914. The average combined factor has been determined based on an ellipsoidal elevation of 575.7 metres.

Note:
This plan shows one or more witness posts which are not set on the true corner(s).
Some points are exaggerated for clarity. Wooden Guard Stakes set at each new post set on this survey plan.

Legend

- | Symbol | Description |
|--------|-----------------------------|
| ⊙ | Control Monument |
| ● | Standard Iron Post |
| ⊕ | Traverse Hub |
| CSF | Combined Scale Factor |
| EAA | Estimated Absolute Accuracy |
| WL | Witness |

Station	Georeferencing Positions UTM Coordinates, Zone 10, NAD 83 (CSRS), 2022.0		
	Northing	Easting	CSF
3	5967725.90	519302.88	0.999140
4	5967919.87	519488.94	0.999144



61
Plan EPP16518

Book of Reference		
Description	PID	Area (ha)
District Lot 2014, Cariboo District, Except Plans 29514, EPP5390, EPP16518, and EPP53901	015-039-099	0.695