

# REFERENCE PLAN OF EASEMENT OVER PARTS OF LOT 2, 3, AND 4, DISTRICT LOT 2507, CARIBOO DISTRICT, PLAN EPP99007.

PLAN EPP100140

PURSUANT TO SECTION 99(1)(e) OF THE LAND TITLE ACT. FOR EASEMENT PURPOSES

THIS PLAN LIES WITHIN INTEGRATED SURVEY AREA No. 39 PRINCE GEORGE, BC, NAD83 (CSRS) 4.0.0.BC.1.

BCGS 93G.096



THE INTENDED PLOT SIZE OF THIS PLAN IS 432mm IN WIDTH BY 280mm IN HEIGHT (B SIZE) WHEN PLOTTED AT A SCALE OF 1:250.

ALL DISTANCES ARE IN METRES AND DECIMALS THEREOF.

GRID BEARINGS ARE DERIVED FROM PLAN EPP99007 AND ARE REFERRED TO THE CENTRAL MERIDIAN OF UTM ZONE 10.

THE UTM COORDINATES AND ESTIMATED ABSOLUTE ACCURACY ACHIEVED HAVE BEEN DERIVED FROM PLAN EPP99007.

THIS PLAN SHOWS HORIZONTAL GROUND-LEVEL DISTANCES UNLESS OTHERWISE SPECIFIED. TO COMPUTE GRID DISTANCES, MULTIPLY GROUND-LEVEL DISTANCES BY THE COMBINED FACTOR OF 0.9995095 WHICH HAS BEEN DERIVED FROM PLAN EPP99007.

BOOK OF REFERENCE	
DESCRIPTION	AREA
LOT 2, DISTRICT LOT 2507, CARIBOO DISTRICT, PLAN EPP99007.	AREA 1 = 31.5 m <sup>2</sup>
LOT 3, DISTRICT LOT 2507, CARIBOO DISTRICT, PLAN EPP99007.	AREA 2 = 85.9 m <sup>2</sup>
LOT 4, DISTRICT LOT 2507, CARIBOO DISTRICT, PLAN EPP99007.	AREA 3 = 86.3 m <sup>2</sup>

## LEGEND

SYMBOLS DESCRIPTION

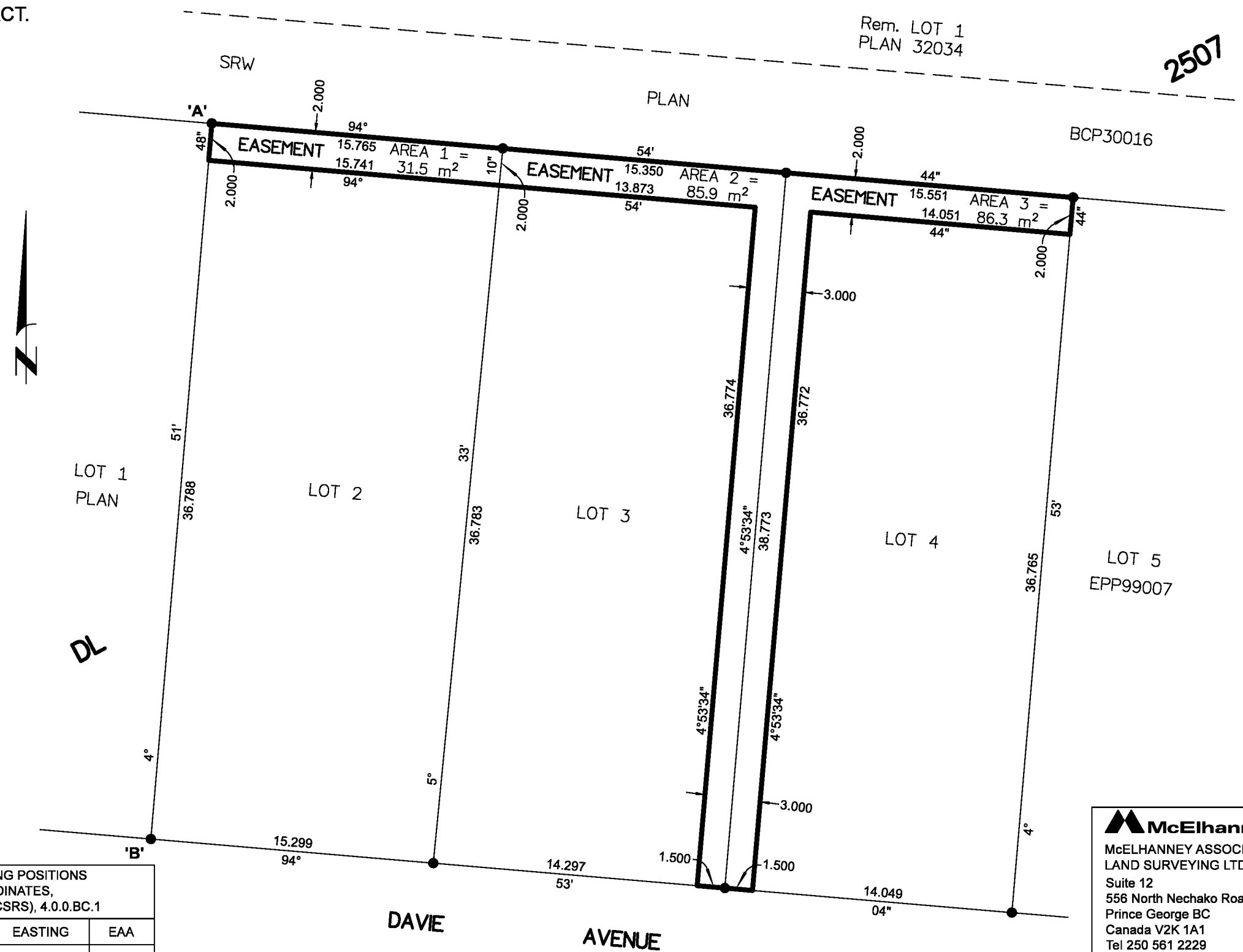
FOUND PLACED

- STANDARD IRON POST
- EAA ESTIMATED ABSOLUTE ACCURACY

THE FIELD SURVEY REPRESENTED BY THIS PLAN WAS COMPLETED ON THE 16th DAY OF DECEMBER, 2019  
SHAUNA C. GOERTZEN, BCLS 798

GEOREFERENCING POSITIONS UTM COORDINATES, ZONE 10, NAD 83 (CSRS), 4.0.0.BC.1			
STATION	NORTHING	EASTING	EAA
Fd. IP 'A'	5974125.94	513087.18	0.09
Fd. IP 'B'	5974087.31	513083.89	0.09

THIS PLAN LIES WITHIN THE REGIONAL DISTRICT OF FRASER-FORT GEORGE.



**McElhanney**  
 McELHANNEY ASSOCIATES  
 LAND SURVEYING LTD.  
 Suite 12  
 556 North Nechako Road  
 Prince George BC  
 Canada V2K 1A1  
 Tel 250 561 2229

File No. 2341-6536-E