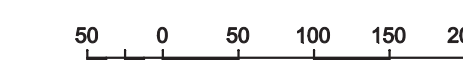


SURVEY PLAN OF BLOCK A AND ROAD, DL 2675, CARIBOO DISTRICT

BCGS 93G 086 7405273



All distances are in metres

The intended plot size of this plan is 864 mm in width by 560mm in height when plotted at scale 1:5000 (use D size sheet)

LEGEND

- Standard Iron Post Placed
- Standard Iron Post Found
- ⊗ Standard Capped Post Placed
- ⊙ Standard Capped Post Found
- ⊕ Control Monument

BT bearings are magnetic

This plan shows one or more witness posts that not set on the true corner(s).

Grid bearings are derived from observations between control monuments 85H1163 and 85H1224 Integrated Survey Area Number 39, City of Prince George, NAD 83(CSRS)

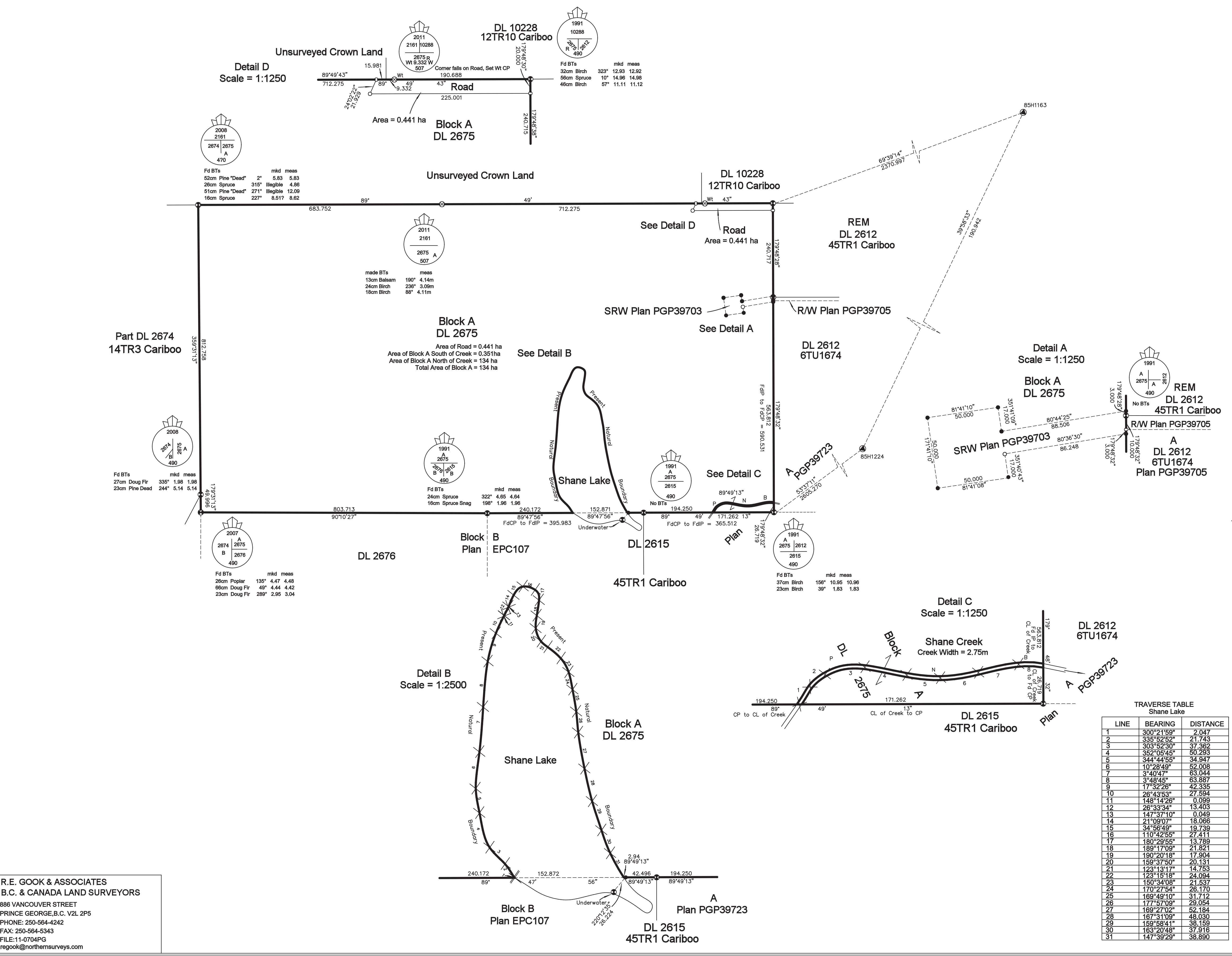
This plan shows ground-level measured distances Prior to computation of UTM coordinates multiply by combined factor of 0.9994747

TRAVERSE TABLE
Centerline of Shane Creek

LINE	BEARING	DISTANCE
1	34°57'40"	8.156
2	18°59'26"	7.108
3	53°19'26"	17.335
4	74°53'29"	20.426
5	105°12'07"	41.953
6	90°52'56"	35.073
7	70°40'55"	40.065
8	101°37'48"	17.561

This plan lies within the Regional District of Fraser-Fort George

The field survey represented by this plan was completed by Richard E. Gook, BCLS on the 21st day of September, 2011



TRAVERSE TABLE
Shane Lake

LINE	BEARING	DISTANCE
1	300°21'59"	2.047
2	335°52'52"	21.743
3	303°52'30"	37.362
4	352°05'45"	50.293
5	344°44'55"	34.947
6	10°28'49"	52.008
7	3°40'47"	63.044
8	3°48'45"	63.887
9	17°32'26"	42.335
10	26°43'53"	27.594
11	148°14'26"	0.099
12	26°33'34"	13.403
13	147°37'10"	0.049
14	21°09'07"	18.066
15	34°56'49"	19.739
16	110°42'55"	27.411
17	180°29'55"	13.789
18	189°17'09"	21.821
19	190°20'18"	17.904
20	159°37'50"	20.131
21	123°31'17"	14.753
22	123°15'18"	24.084
23	150°34'08"	21.537
24	170°27'54"	26.170
25	169°49'10"	31.712
26	177°57'09"	29.054
27	169°27'02"	52.184
28	167°31'09"	48.030
29	159°58'41"	38.159
30	163°20'48"	37.916
31	147°39'29"	38.890

R.E. GOOK & ASSOCIATES
B.C. & CANADA LAND SURVEYORS
886 VANCOUVER STREET
PRINCE GEORGE, B.C. V2L 2P5
PHONE: 250-564-4242
FAX: 250-564-5343
FILE: 11-0704PG
regook@northernsurveys.com