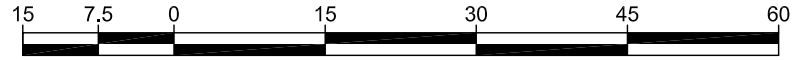


Survey Plan of Block C, District Lot 2100,
Cariboo District

Integrated Survey Area No. 39 Prince George, BC, NAD83 (CSRS) 4.0.0.BC.1

BCGS 93G.096



The intended plot size of this plan is 432mm in width by 560mm in height (C size) when plotted at a scale of 1:750.

All distances are in metres and decimals thereof.

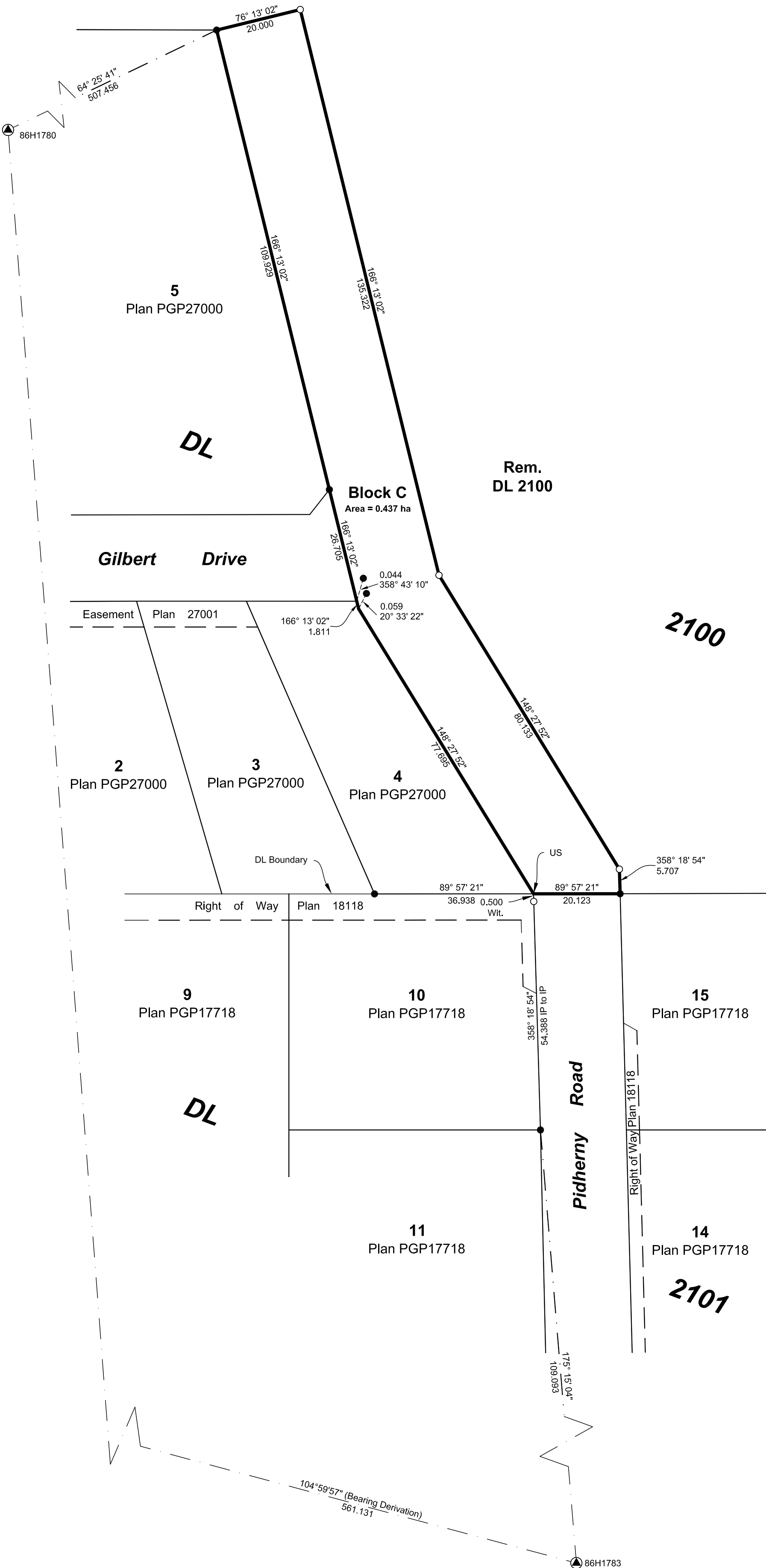
Grid bearings are derived from observations between geodetic control monuments 86H1783 and 86H1780. The UTM coordinates and estimated horizontal positional accuracy achieved have been derived from MASCOT published coordinates and standard deviations for geodetic control monuments 86H1783 and 86H1780. This plan shows horizontal ground-level distances unless otherwise specified. To compute grid distances, multiply ground-level distances by the average combined factor of 0.9995086 which has been derived from control monument 86H1783.

Note:
This plan shows one or more witness posts which are not set on the true corner(s). Some posts are exaggerated for clarity.

Legend

Symbols		Description
Found	Placed	
▲	○	Control Monument
●	○	Standard Iron Post
CSF		Combined Scale Factor
US		Unsuitable to Post

Georeferencing Positions UTM Coordinates, Zone 10, NAD 83 (CSRS), 4.0.0.BC.1				
Station	Northing	Easting	Absolute Accuracy	CSF
86H1783	5979717.75	510375.34	0.10	0.9995086
86H1780	5979862.90	509833.59	0.10	0.9995103



The field survey represented by this plan was completed on the 14th day of March, 2019

Scott A. Maguire BCLS 903

This plan lies within the Regional District of Fraser-Fort George.

File: 19014-CG

Koehler Land Surveying Inc.
1698 Lyon Street South
Prince George, BC V2N 1T3
Tel: (250) 614-9703