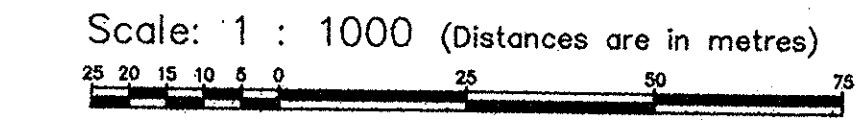


SURVEY PLAN OF BLOCK A OF DISTRICT LOT 11672,  
 BLOCK A OF DISTRICT LOT 11671 AND DISTRICT  
 LOTS 13132 AND 13168, CARIBOO DISTRICT.

B.C.G.S. 93G.097

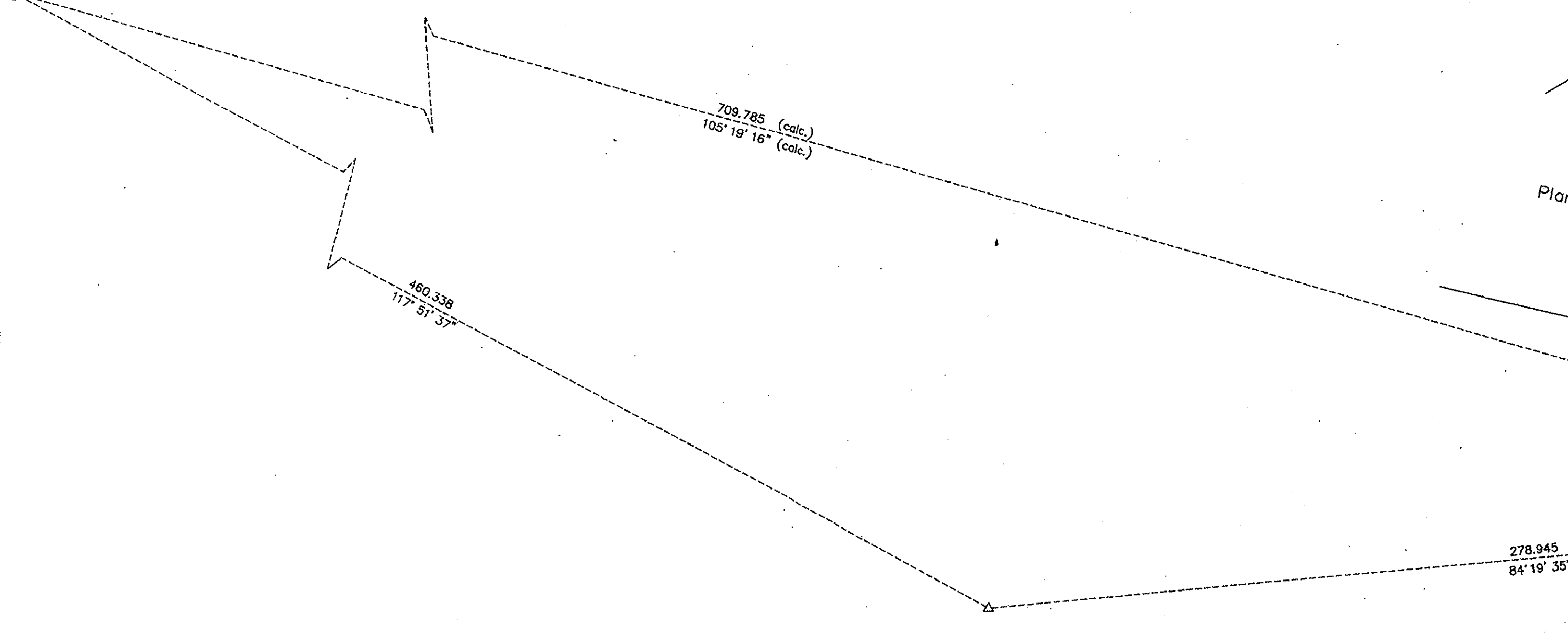
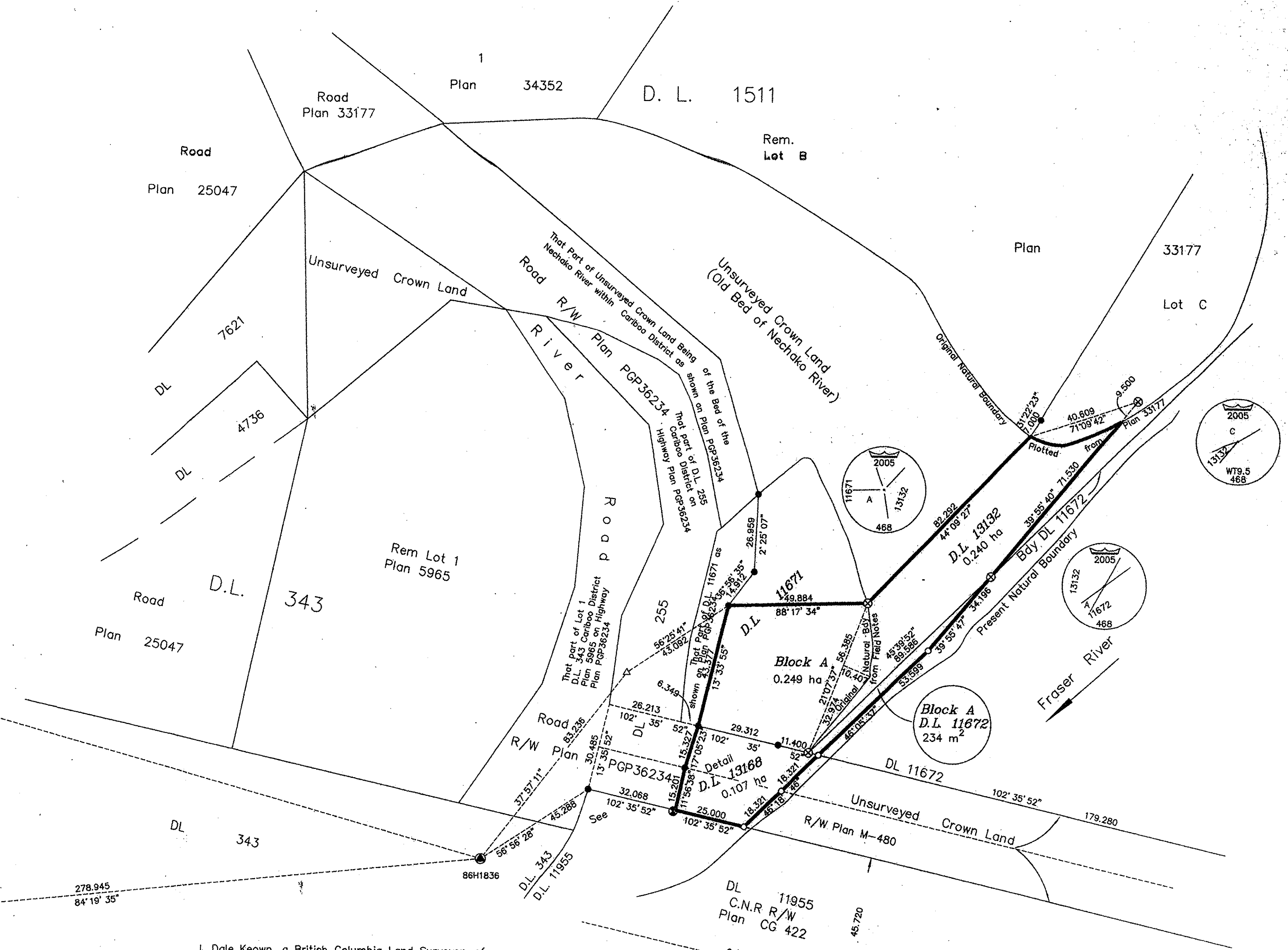
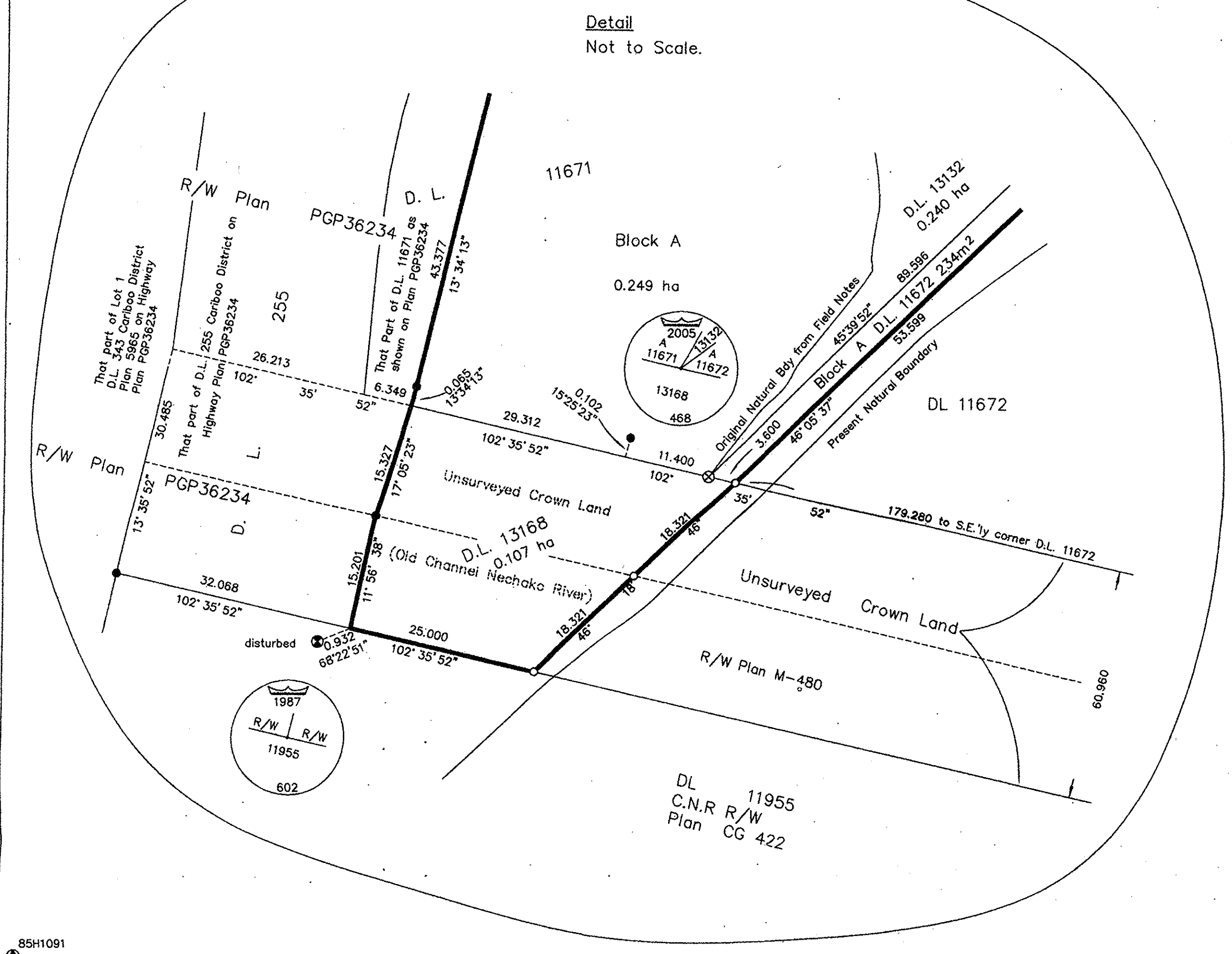
LEGEND



Grid bearings are derived from observations between control monuments 86H1836 and 85H1091, integrated survey area number 39, City of Prince George, B.C. NAD83(CSRS)

- Standard Capped Post Found
- Standard Capped Post Placed
- Standard Iron Post Found
- Standard Iron Post Placed
- △ Control Monument Found
- △ Traverse Hub Placed

Note: This plan shows ground level measured distances. Prior to computation of U.T.M. co-ordinates multiply by the combined factor .9995153



I, Dale Keown, a British Columbia Land Surveyor, of Prince George, in British Columbia, certify that I was present at and personally superintended the survey represented by this plan, and that the survey and plan are correct. The field survey was completed on the 18th day of August, 2005. The plan was completed and checked, and the checklist filed under #36533, on the 30th day of August, 2005.

*Dale Keown*  
 Dale Keown, B.C.L.S.

This plan lies within the Fraser-Fort George Regional District.

KILBRIDE LAND SURVEYING LTD.  
 British Columbia Land Surveyors  
 Prince George, B.C.  
 Ph: (250) 562-1196 Fax: 562-3656

**OFFICIAL PLAN**  
 CONFIRMED UNDER SECTION 72  
 LAND ACT

Surveyor General  
 Victoria, B.C.