

# STRATA PLAN OF LOT 1, DISTRICT LOT 2003, CARIBOO DISTRICT, PLAN PGP38248.

## STRATA PLAN BGS 1728

Deposited and registered in the Land Title Office at  
New Westminster this 27 day of February 2006

B.C.G.S. 93G.087

REGISTRAR

BA3555562 to BA355567

**Civic Address**

7000 Southridge Avenue  
Prince George, B.C.

The address for service of documents  
of the Strata Corporation is:  
1033 - 3rd Avenue  
Prince George, B.C.  
V2L 3E3

Scale: 1 : 750 (Distances are in metres)



Grid bearings are derived from observations between  
control monuments 86H1484 and 86H1673, integrated  
survey area number 39, City of Prince George, B.C.  
NAD83(CSRS)

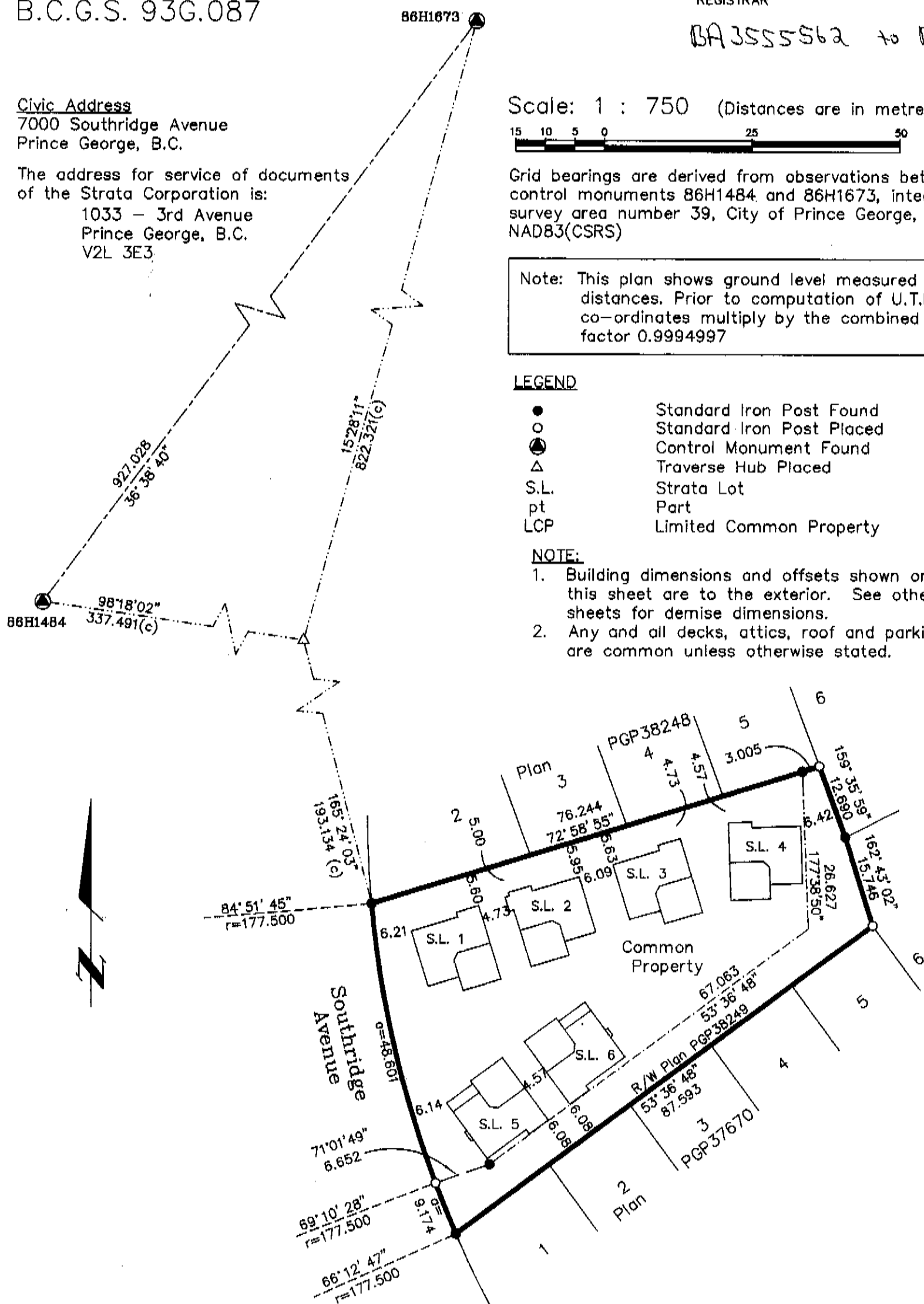
Note: This plan shows ground level measured  
distances. Prior to computation of U.T.M.  
co-ordinates multiply by the combined  
factor 0.9994997

**LEGEND**

- Standard Iron Post Found
- Standard Iron Post Placed
- ⊙ Control Monument Found
- △ Traverse Hub Placed
- S.L. Strata Lot
- pt Part
- LCP Limited Common Property

**NOTE:**

1. Building dimensions and offsets shown on  
this sheet are to the exterior. See other  
sheets for demise dimensions.
2. Any and all decks, attics, roof and parking  
are common unless otherwise stated.



I, Gordon Kilbride, of Prince George, a British  
Columbia Land Surveyor, hereby certify that  
the buildings erected on the parcel are wholly  
within the external boundaries of that Parcel.  
Dated at Prince George, B.C.  
this 19th day of January, 2006.  
The plan was completed and  
checked, and the checklist filed under # 44791,  
on the 22nd day of February, 2006.

*Gordon Kilbride*  
Gordon Kilbride, B.C.L.S.

This plan lies within the Fraser-Fort  
George Regional District.

**KILBRIDE LAND SURVEYING LTD.**  
British Columbia Land Surveyors  
Prince George, B.C.  
Ph: (250) 562-1196 Fax: 562-3656

F.B.- RA	D.L.- 2003	File No. -040283S1
----------	------------	--------------------

STRATA PLAN OF LOT 1,  
DISTRICT LOT 2003,  
CARIBOO DISTRICT,  
PLAN PGP38248.  
B.C.G.S. 93G.087

STRATA PLAN BCS\_\_\_\_\_

Owner: Hayer Homes Ltd., Inc # BC0281313



Authorized Signatory  
**ROOD HAYER**  
Print Name

Authorized Signatory

Print Name



Witness to both  
**VIKKI CUNNINGHAM**  
Print Name

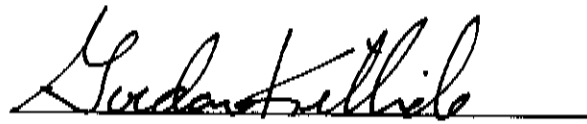
**1033-3<sup>RD</sup> AVENUE**  
Address

**PRINCE GEORGE BC V2L3E3**  
Postal Code

**LEGAL ASSISTANT**  
Occupation

ENDORSEMENT OF NONOCCUPANCY

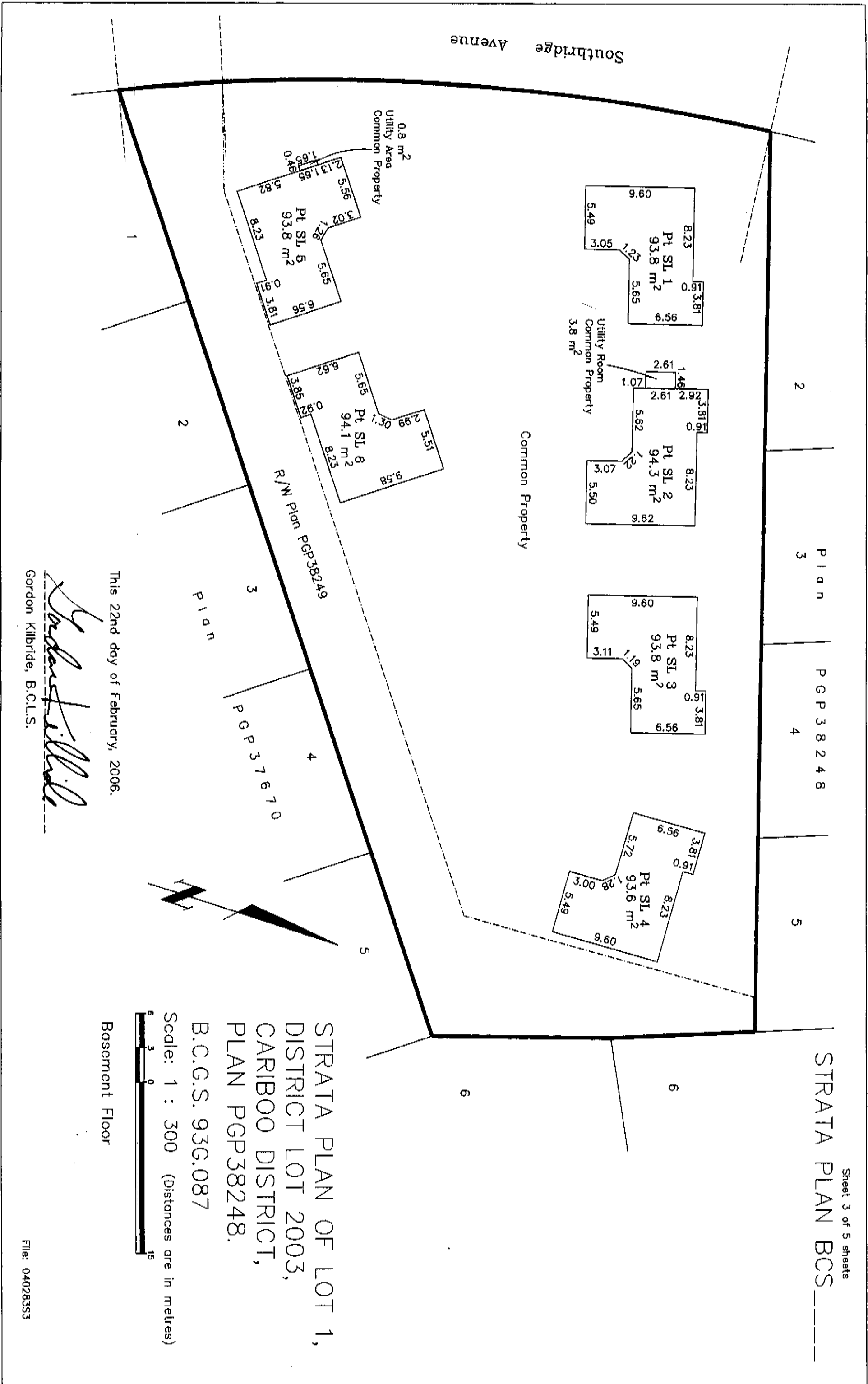
I, Gordon Kilbride, of Prince George, a British Columbia Land Surveyor, hereby certify that the buildings included in this strata plan have not, as of February 22, 2006, been previously occupied.



Gordon Kilbride, B.C.L.S.

# STRATA PLAN BCS

Plan PGP 38248



This 22nd day of February, 2006.

*Gordon Kilbride*  
 Gordon Kilbride, B.C.L.S.

STRATA PLAN OF LOT 1,  
 DISTRICT LOT 2003,  
 CARIBOO DISTRICT,  
 PLAN PGP38248.

B.C.G.S. 93G.087

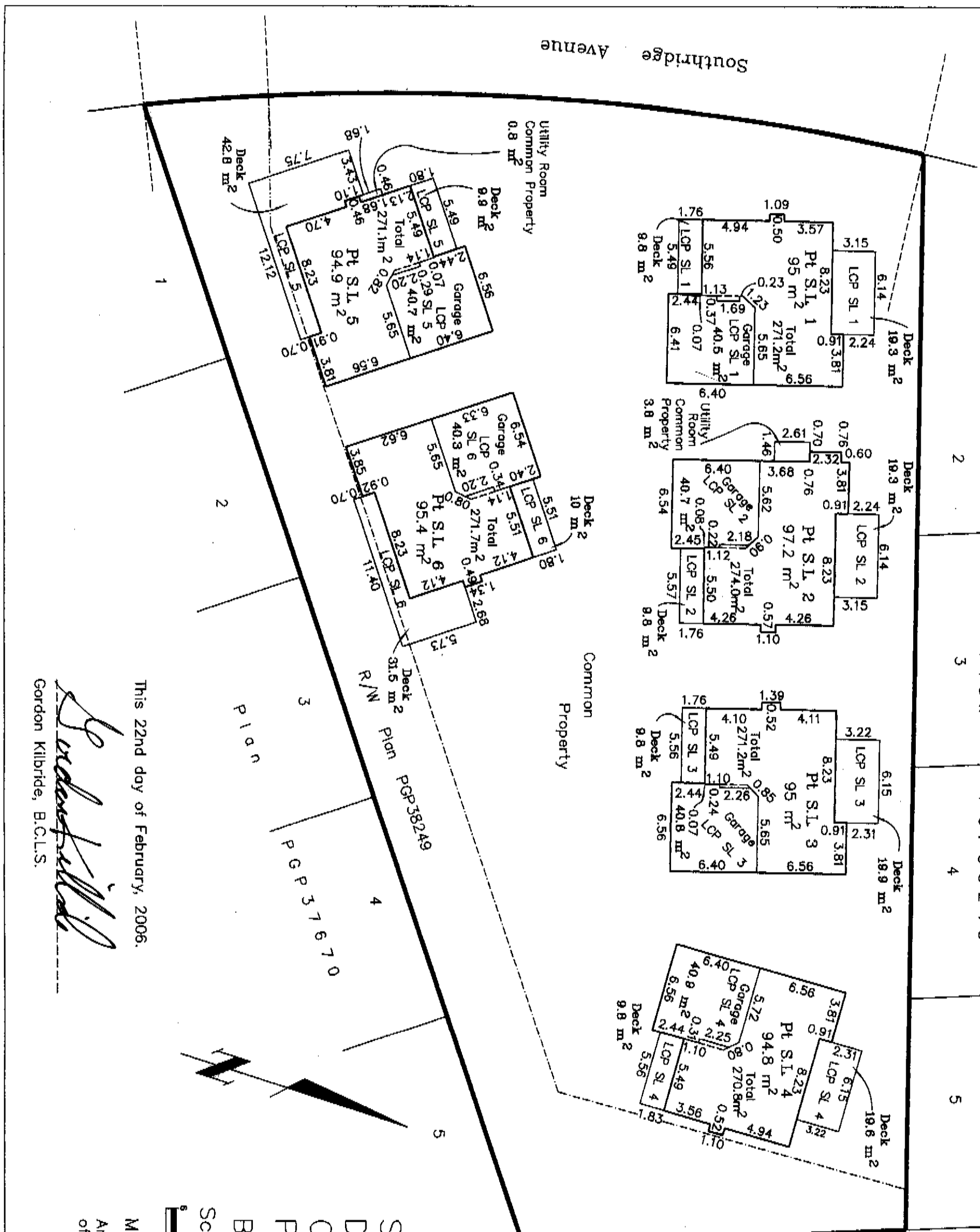
Scale: 1 : 300 (Distances are in metres)



Basement Floor

STRATA PLAN BCS \_\_\_\_\_

Plan PGP 38248



STRATA PLAN OF LOT 1,  
DISTRICT LOT 2003,  
CARIBOO DISTRICT,  
PLAN PGP38248.

B.C.G.S. 93G.087

Scale: 1 : 300 (Distances are in metres)



Main Floor

An area shown dashed is the outline of the basement area.

This 22nd day of February, 2006.

*Gordon Kilbride*  
Gordon Kilbride, B.C.L.S.

# STRATA PLAN BCS \_\_\_\_\_

Plan PGP 38248

2

3

4

5

Southridge Avenue

Common Property



STRATA PLAN OF LOT 1,  
 DISTRICT LOT 2003,  
 CARIBOO DISTRICT,  
 PLAN PGP38248.

B.C.G.S. 93G.087

Scale: 1 : 300 (Distances are in metres)



Second Floor

This 22nd day of February, 2006.

*Gordon Kibride*

Gordon Kibride, B.C.L.S.