

REFERENCE PLAN TO ACCOMPANY CITY OF PRINCE GEORGE  
BYLAW No. \_\_\_\_\_ CLOSING PART OF LANE ADJACENT TO  
LOTS 1 TO 6 INCLUSIVE, AMENDED LOT 7(66912M), AMENDED  
LOT 14(66912M) AND LOTS 15 TO 20 INCLUSIVE AND ESTABLISHING  
AS ROAD PARTS OF LOTS 1 AND 20; ALL WITHIN BLOCK 146, PLAN 1268,  
DISTRICT LOT 343,  
CARIBOO DISTRICT.

B.G.C.S. 93G.097

PURSUANT TO SECTION 525(3) OF THE LOCAL GOVERNMENT ACT.



SCALE = 1 : 500

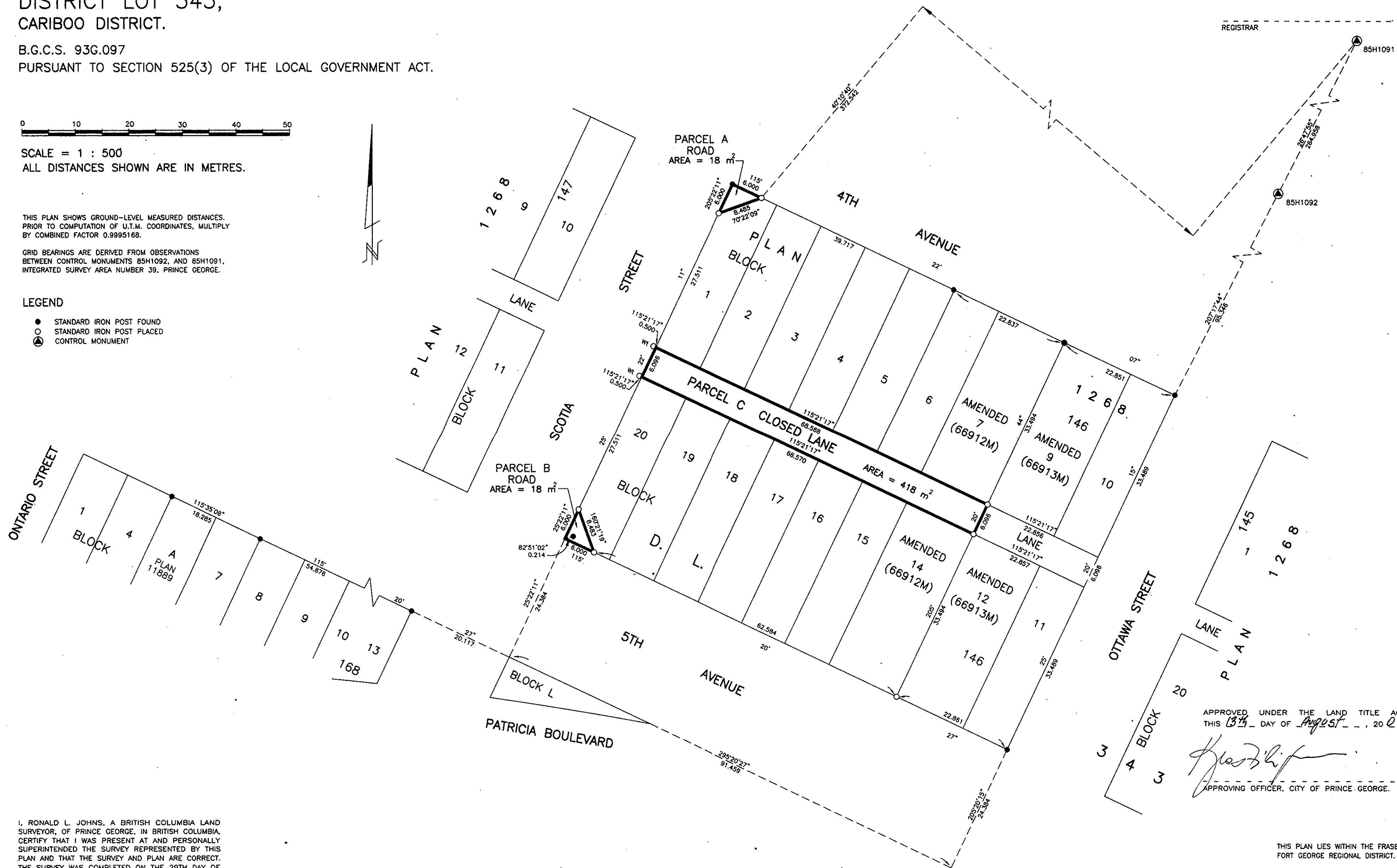
ALL DISTANCES SHOWN ARE IN METRES.

THIS PLAN SHOWS GROUND-LEVEL MEASURED DISTANCES.  
PRIOR TO COMPUTATION OF U.T.M. COORDINATES, MULTIPLY  
BY COMBINED FACTOR 0.9995168.

GRID BEARINGS ARE DERIVED FROM OBSERVATIONS  
BETWEEN CONTROL MONUMENTS 85H1092, AND 85H1091,  
INTEGRATED SURVEY AREA NUMBER 39, PRINCE GEORGE.

#### LEGEND

- STANDARD IRON POST FOUND
- STANDARD IRON POST PLACED
- ⊙ CONTROL MONUMENT



PLAN No. BCP 1832  
BV48556  
DEPOSITED IN THE LAND TITLE OFFICE  
AT NEW WESTMINSTER, B.C., THIS 17  
DAY OF 05, 2003

REGISTRAR

APPROVED UNDER THE LAND TITLE ACT  
THIS 13th DAY OF August, 2003

*[Signature]*  
APPROVING OFFICER, CITY OF PRINCE GEORGE.

I, RONALD L. JOHNS, A BRITISH COLUMBIA LAND  
SURVEYOR, OF PRINCE GEORGE, IN BRITISH COLUMBIA,  
CERTIFY THAT I WAS PRESENT AT AND PERSONALLY  
SUPERINTENDED THE SURVEY REPRESENTED BY THIS  
PLAN AND THAT THE SURVEY AND PLAN ARE CORRECT.  
THE SURVEY WAS COMPLETED ON THE 29TH DAY OF  
JULY, 2002.

*[Signature]*  
R.L. JOHNS, B.C.L.S., C.L.S.

THIS PLAN LIES WITHIN THE FRASER-  
FORT GEORGE REGIONAL DISTRICT.

R. L. JOHNS LAND SURVEYING LTD.  
LEGAL AND ENGINEERING SURVEYS  
240 VICTORIA STREET  
PRINCE GEORGE, B. C. V2L 2J4  
PHONE: (250)562-5759  
FAX: (250)562-5703

2000070 U10-31,33-35  
FF1-10-12