

REFERENCE PLAN OF EASEMENT  
OVER PART OF SOUTH 1/2 OF  
DISTRICT LOT 749, CARIBOO DISTRICT.  
EXCEPT PLANS A227, 16570, 17144,  
PGP39661 AND PGP43431.

Pursuant to Section 99(1)(e) of  
the Land Title Act.  
B.C.G.S. 93G.087

Scale: 1 : 2500 (Distances are in metres)



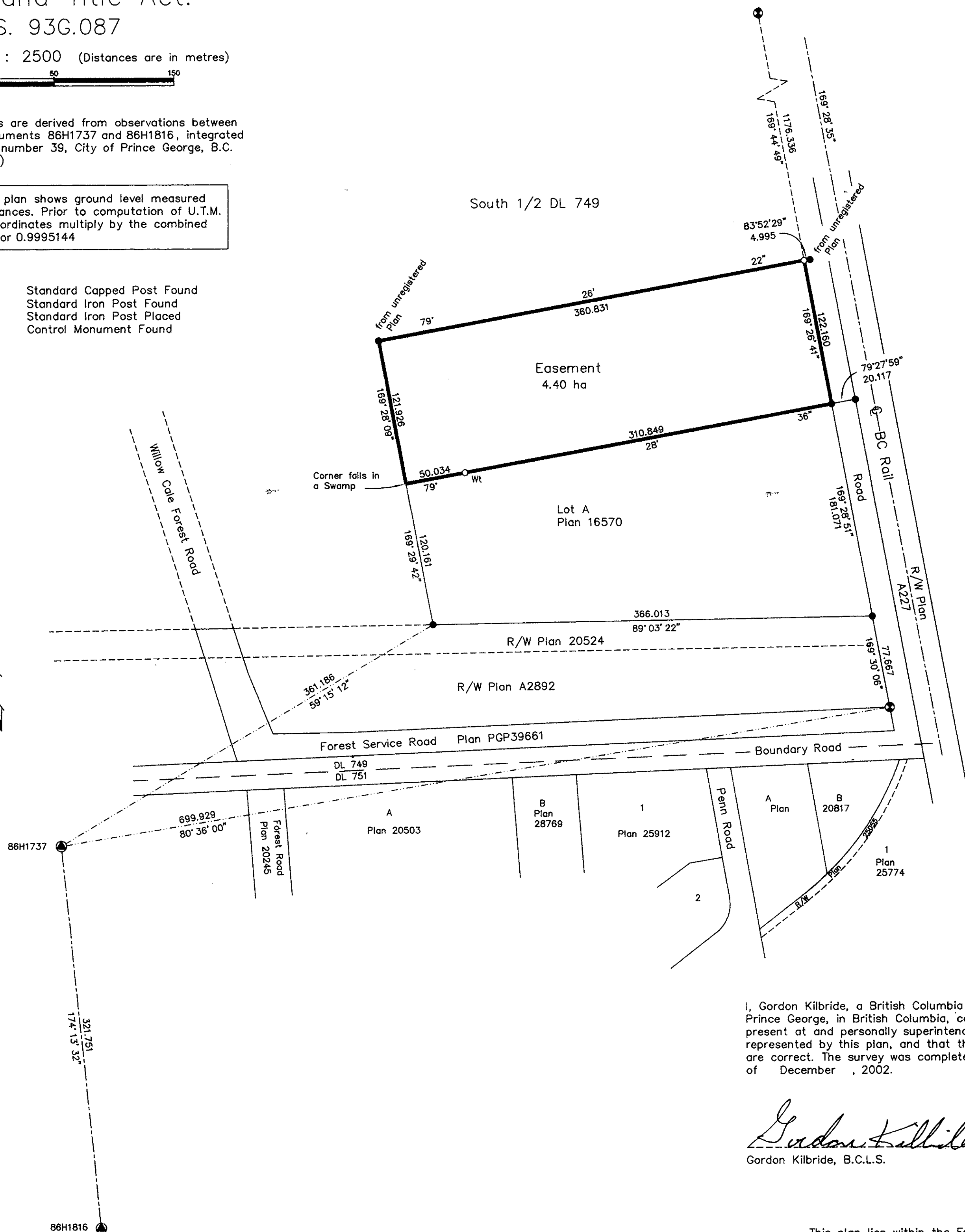
Grid bearings are derived from observations between  
control monuments 86H1737 and 86H1816, integrated  
survey area number 39, City of Prince George, B.C.  
NAD83(CSRS)

Note: This plan shows ground level measured  
distances. Prior to computation of U.T.M.  
co-ordinates multiply by the combined  
factor 0.9995144

LEGEND

- Standard Capped Post Found
- Standard Iron Post Found
- Standard Iron Post Placed
- Control Monument Found

South 1/2 DL 749



PLAN NO. BCP 7676

Deposited in the Land Title Office at New  
Westminster this 07 day of Oct. 2003

REGISTRAR

REF. #BU412164

I, Gordon Kilbride, a British Columbia Land Surveyor, of  
Prince George, in British Columbia, certify that I was  
present at and personally superintended the survey  
represented by this plan, and that the survey and plan  
are correct. The survey was completed on the 2 day  
of December, 2002.

*Gordon Kilbride*  
Gordon Kilbride, B.C.L.S.

This plan lies within the Fraser-Fort  
George Regional District.

**KILBRIDE LAND SURVEYING LTD.**  
British Columbia Land Surveyors  
Prince George, B.C.  
Ph: (250) 562-1196 Fax: 562-3656

F.B. RA D.L. 749 File No. 020217