

EXPLANATORY PLAN OF AN EASEMENT OF PART OF THE UNDERGROUND PARKADE LEVEL LOCATED ON PARCEL 1, DISTRICT LOT 343, CARIBOO DISTRICT, PLAN BCP29643 EXCEPT AIR SPACE PLAN BCP45794.

PLAN BCP 50472

DEPOSITED IN THE LAND TITLE OFFICE AT NEW WESTMINSTER THIS 30th DAY OF March 2012

BCGS 93G.097

Larry Blaschuk MOF
REGISTRAR

Ref: B82018071

PURSUANT TO SECTION 99(1)(e) OF THE LAND TITLE ACT

THE INTENDED PLOT SIZE OF THIS PLAN IS 560mm IN WIDTH BY 432mm IN HEIGHT (C SIZE) WHEN PLOTTED AT A SCALE OF 1:500



ALL DISTANCES ARE HORIZONTAL GROUND-LEVEL AND ARE SHOWN IN METRES AND DECIMALS THEREOF, UNLESS OTHERWISE NOTED

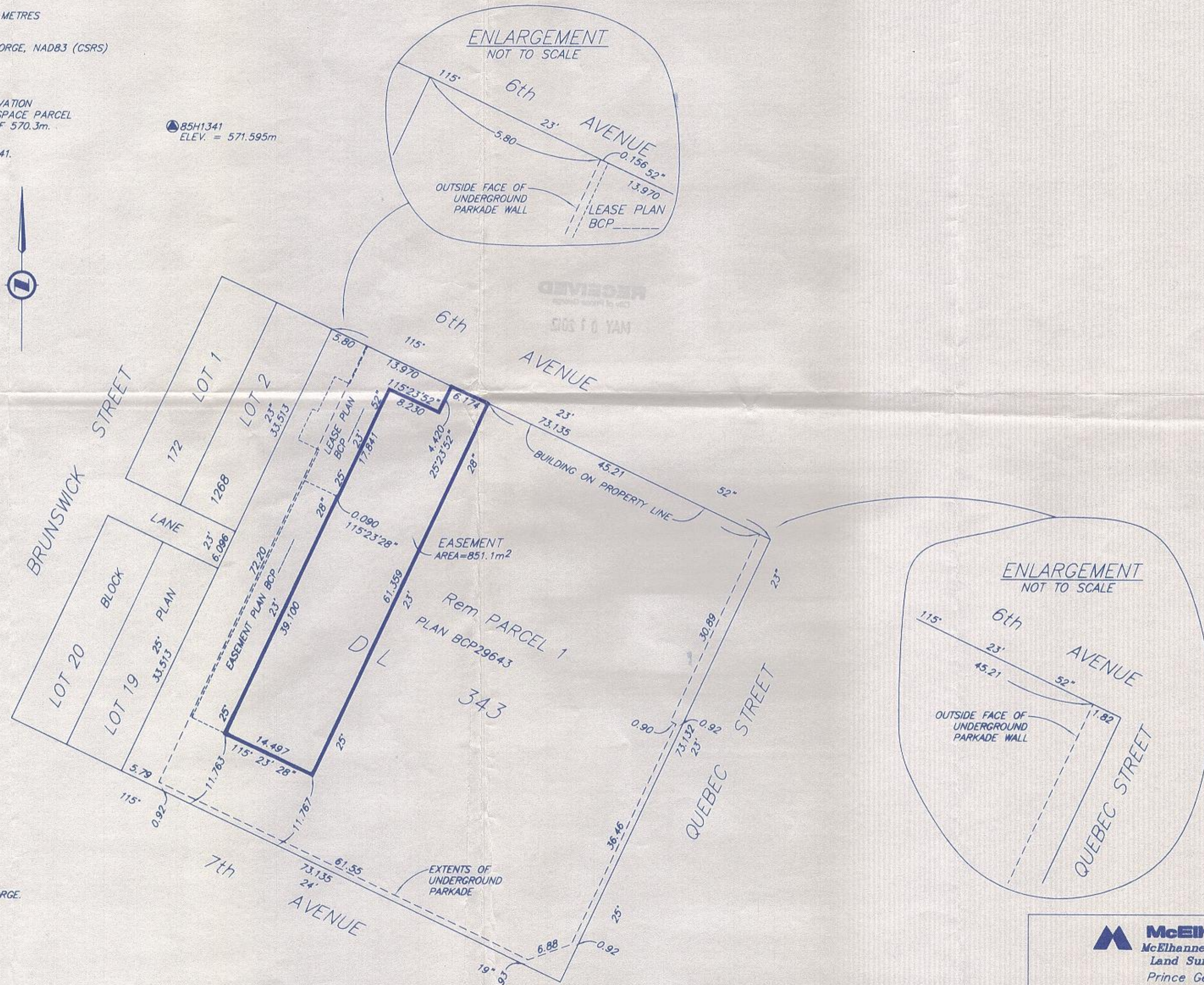
THIS PLAN LIES WITHIN INTEGRATED SURVEY AREA NO. 39, PRINCE GEORGE, NAD83 (CSRS)

GRID BEARINGS ARE DERIVED FROM PLAN BCP29643

NOTE: FLOOR ELEVATION OF PARKADE LEVEL IS 567.2m. CEILING ELEVATION OF PARKADE LEVEL IS COINCIDENT WITH THE BOTTOM OF AIR SPACE PARCEL ONE, AIR SPACE PLAN BCP45794 WHICH HAS AN ELEVATION OF 570.3m.

ELEVATIONS ARE GEODETIC DERIVED FROM CONTROL MONUMENT 85H1341.

85H1341
ELEV. = 571.595m



THIS PLAN LIES WITHIN THE REGIONAL DISTRICT OF FRASER-FORT GEORGE.

THIS PLAN WAS COMPLETED AND CHECKED, AND THE CHECKLIST FILED UNDER #113388, ON THE 3rd DAY OF AUGUST, 2010 AND IS HEREBY CERTIFIED CORRECT IN ACCORDANCE WITH LAND TITLE OFFICE RECORDS.

D. Storback

DAVID E STORBACK, BCLS

McElhanney
McElhanney Associates
Land Surveying Ltd.
Prince George, B.C.

E-mail: pgmalls@mcElhanney.com
Ph: (250) 561-2229 Fax: (250) 563-1941

DL- 343(172)

File No. - 5843-EAS2