

EXPLANATORY PLAN OF LEASE OF PART OF THE UNDERGROUND PARKADE LEVEL LOCATED ON PARCEL 1, DISTRICT LOT 343, CARIBOO DISTRICT, PLAN BCP29643 EXCEPT AIR SPACE PLAN BCP45794.

PLAN BCP 50470

DEPOSITED IN THE LAND TITLE OFFICE AT NEW WESTMINSTER THIS 30 DAY OF March 2012.

BCGS 93G.097

Lamy Blaszuk MAF  
REGISTRAR

REF: BB2018068

PURSUANT TO SECTION 99(1)(k) OF THE LAND TITLE ACT

THE INTENDED PLOT SIZE OF THIS PLAN IS 560mm IN WIDTH BY 432mm IN HEIGHT (C SIZE) WHEN PLOTTED AT A SCALE OF 1:500

0m 10 20 30 50m

ALL DISTANCES ARE HORIZONTAL GROUND-LEVEL AND ARE SHOWN IN METRES AND DECIMALS THEREOF, UNLESS OTHERWISE NOTED

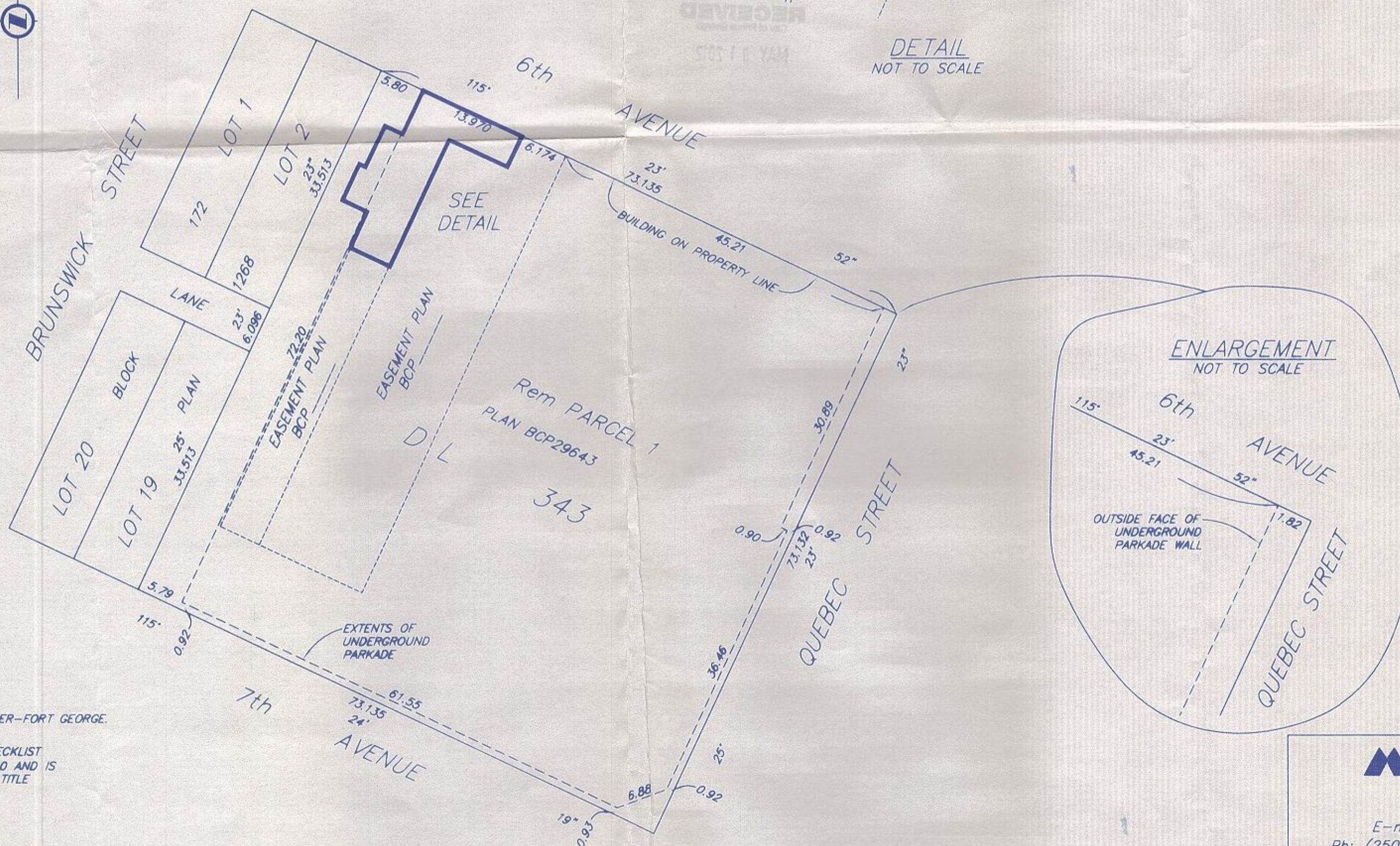
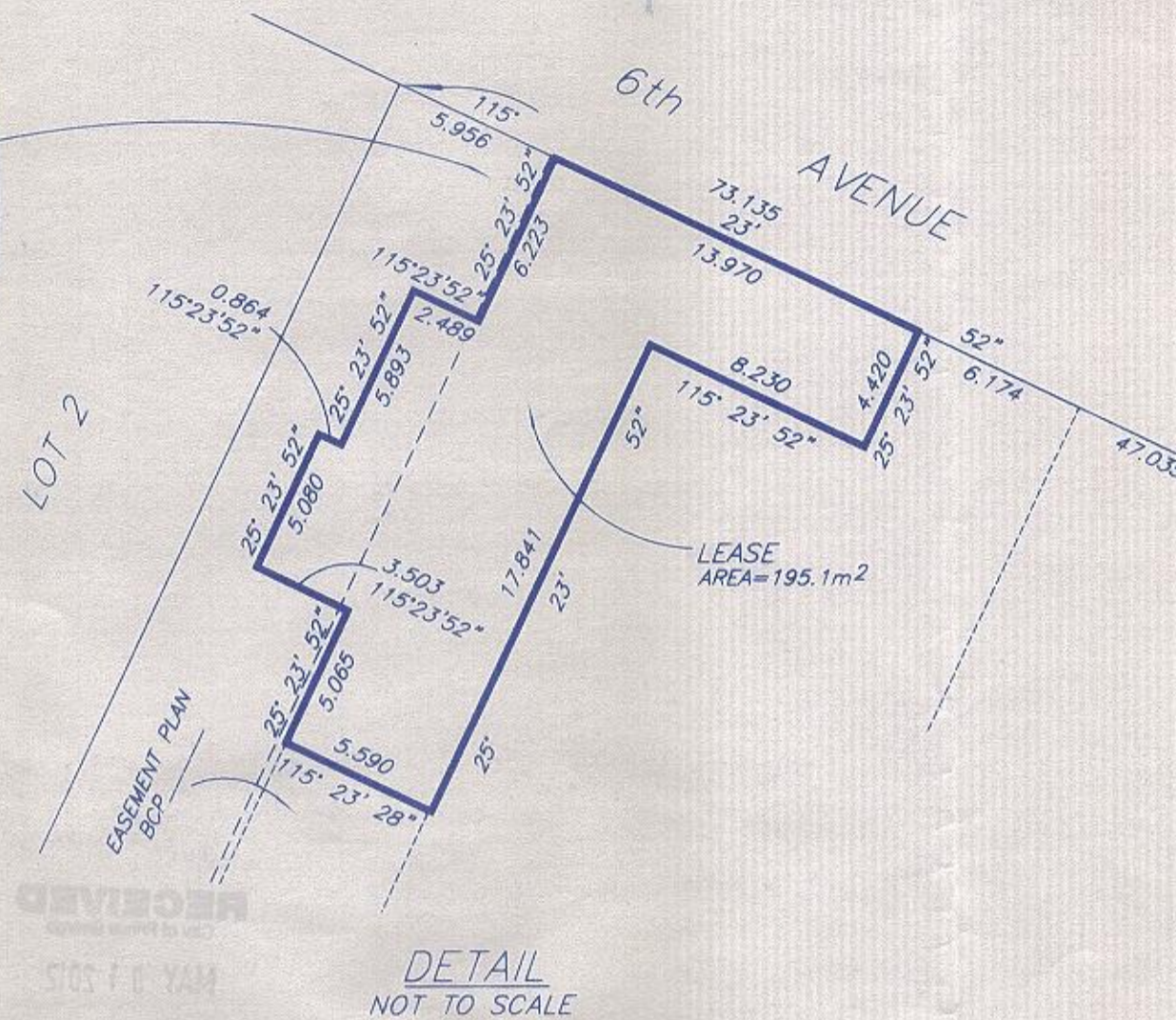
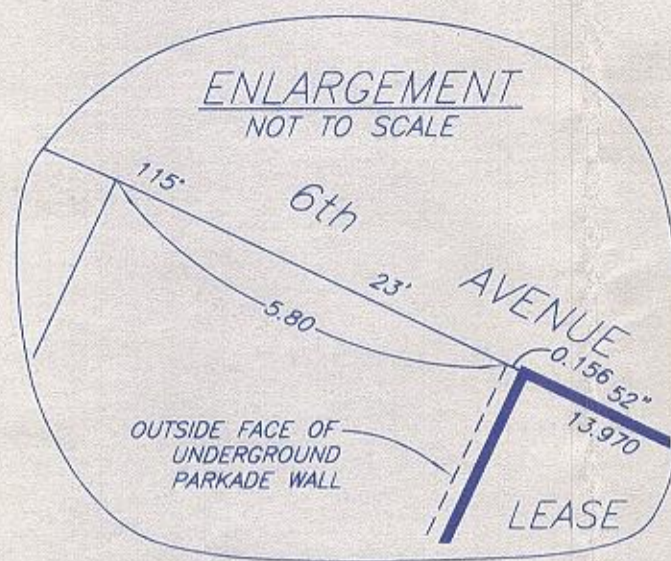
THIS PLAN LIES WITHIN INTEGRATED SURVEY AREA NO. 39, PRINCE GEORGE, NAD83 (CSRS)

GRID BEARINGS ARE DERIVED FROM PLAN BCP29643

NOTE: FLOOR ELEVATION OF PARKADE LEVEL IS 567.2m. CEILING ELEVATION OF PARKADE LEVEL IS COINCIDENT WITH THE BOTTOM OF AIR SPACE PARCEL ONE, AIR SPACE PLAN BCP45794 WHICH HAS AN ELEVATION OF 570.3m.

ELEVATIONS ARE GEODETIC DERIVED FROM CONTROL MONUMENT 85H1341.

85H1341  
ELEV. = 571.595



THIS PLAN LIES WITHIN THE REGIONAL DISTRICT OF FRASER-FORT GEORGE.

THIS PLAN WAS COMPLETED AND CHECKED, AND THE CHECKLIST FILED UNDER #113326, ON THE 31st DAY OF JULY, 2010 AND IS HEREBY CERTIFIED CORRECT IN ACCORDANCE WITH LAND TITLE OFFICE RECORDS.

J. Stalud

DAVID E STORBACK, BCLS

**McElhanney**  
McElhanney Associates  
Land Surveying Ltd.  
Prince George, B.C.

E-mail: pgmals@mcElhanney.com  
Ph: (250) 561-2229 Fax: (250) 563-1941

DL- 343(172)

File No. - 5843-LEAS