

REFERENCE PLAN OF STATUTORY RIGHT OF WAY OVER PARTS OF LOT 2, DLs 777 AND 1430, PLAN 10024; LOT 3, DL 1430, PLAN 17961, EXCEPT PLANS 22207 AND PGP43681; PARCEL 'Y' (28594B), DL 777, PLAN 649 EXCEPT PLANS 10024, H700, 12435 AND 17401, ALL IN CARIBOO DISTRICT.

PLAN BCP 49330

DEPOSITED IN THE LAND TITLE OFFICE AT NEW WESTMINSTER, BC THIS 4th DAY OF October, 2011.

L. Blaschuk per: *gf*
REGISTRAR

Ref: BBA-17390

BCGS 936.087

PURSUANT TO SECTION 113 OF THE LAND TITLE ACT.

THE INTENDED PLOT SIZE OF THIS PLAN IS 432mm IN HEIGHT BY 560mm IN WIDTH (C SIZE) WHEN PLOTTED AT A SCALE OF 1:500



ALL DISTANCES ARE SHOWN IN METRES AND DECIMALS THEREOF, UNLESS OTHERWISE INDICATED.

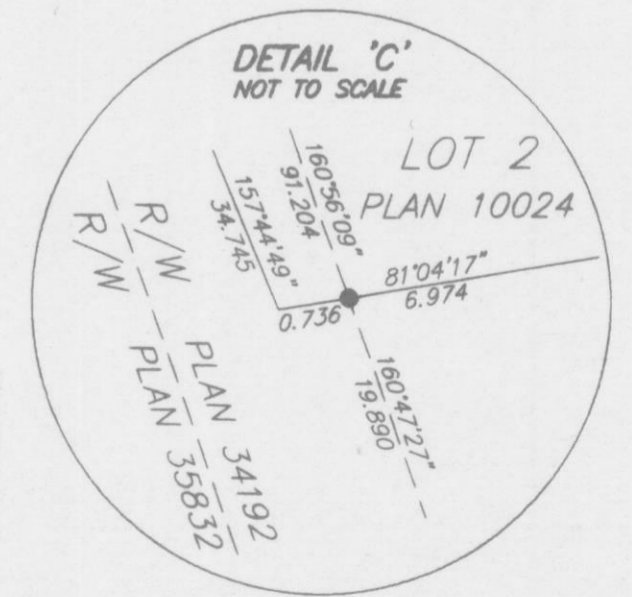
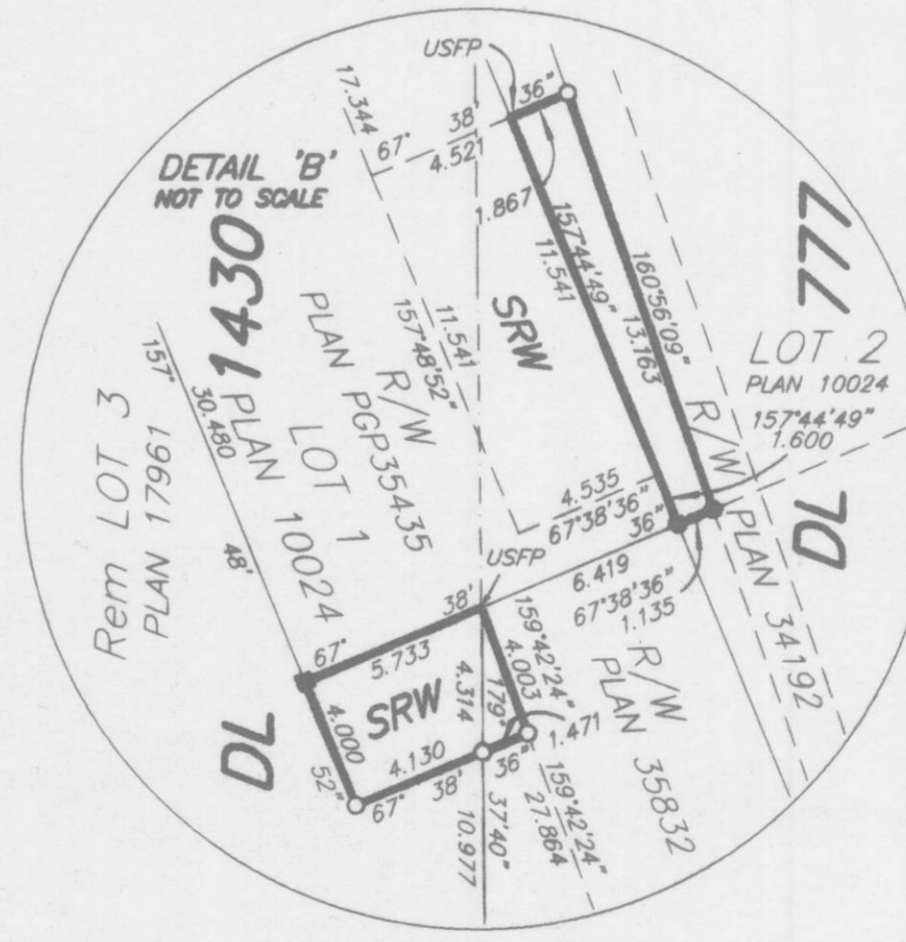
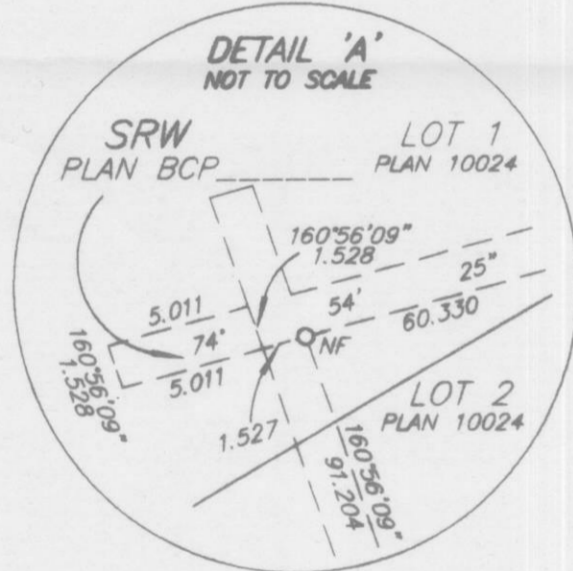
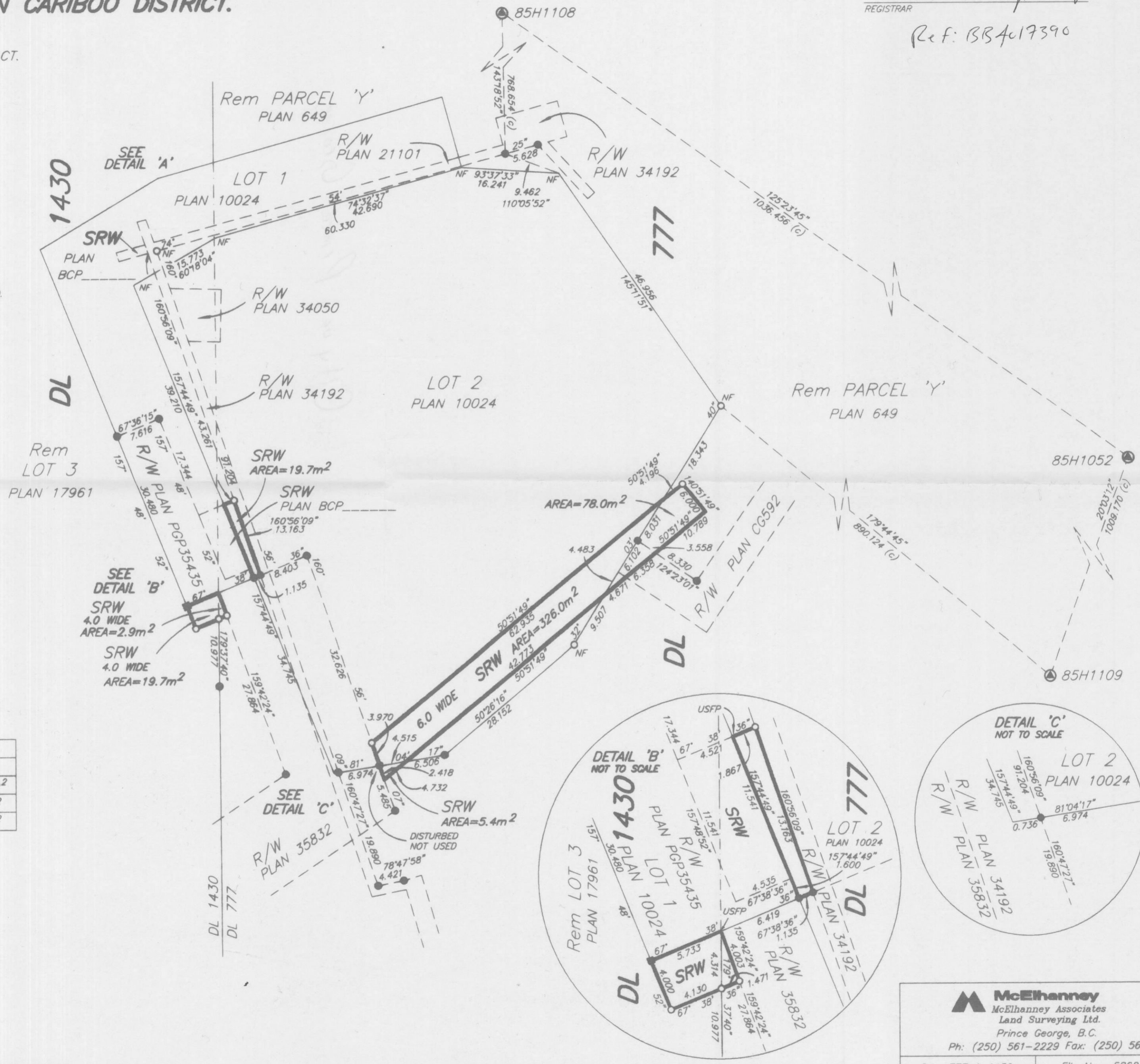
LEGEND

- DENOTES CONTROL MONUMENT FOUND
- DENOTES LEAD PLUG FOUND
- DENOTES STANDARD IRON POST FOUND
- DENOTES STANDARD IRON POST PLACED
- USFP DENOTES UNSUITABLE FOR POSTING

INTEGRATED SURVEY AREA NO. 39, CITY OF PRINCE GEORGE, NAD83(CSRS).

GRID BEARINGS ARE DERIVED FROM OBSERVATIONS BETWEEN GEODETIC CONTROL MONUMENTS 85H1052 AND 85H1108.

TO COMPUTE GRID DISTANCES, MULTIPLY GROUND-LEVEL DISTANCES BY THE MEAN COMBINED SCALE FACTOR OF 0.9995150.



BOOK OF REFERENCE		
DESCRIPTION	AREA	
LOT 2, DL 777 AND DL 1430, CARIBOO DISTRICT, PLAN 10024	345.7 m ²	
Rem LOT 3, DL 1430, CARIBOO DISTRICT, PLAN 17961	19.7 m ²	
Rem PARCEL Y, DL 777, CARIBOO DISTRICT, PLAN 649	86.3 m ²	

I, DAVID E. STORBACK, A BRITISH COLUMBIA LAND SURVEYOR, CERTIFY THAT I WAS PRESENT AT AND PERSONALLY SUPERINTENDED THE SURVEY REPRESENTED BY THIS PLAN, AND THAT THE SURVEY AND PLAN ARE CORRECT. THE FIELD SURVEY WAS COMPLETED ON THE 29th DAY OF NOVEMBER, 2010. THE PLAN WAS COMPLETED AND CHECKED, AND THE CHECKLIST FILED UNDER #119168, ON THE 21st DAY OF JANUARY, 2011.

D. Storback

BCLS

McElhanney
McElhanney Associates
Land Surveying Ltd.
Prince George, B.C.
Ph: (250) 561-2229 Fax: (250) 563-1941