

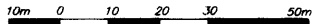
**REFERENCE PLAN TO ACCOMPANY CITY OF PRINCE GEORGE BYLAW 8299 TO CLOSE ROAD DEDICATED BY PLAN 1268, ADJACENT TO LOTS 5 TO 8, BLOCK 166, DL 343, CARIBOO DISTRICT, PLAN 1268.**

BCGS 93G.097

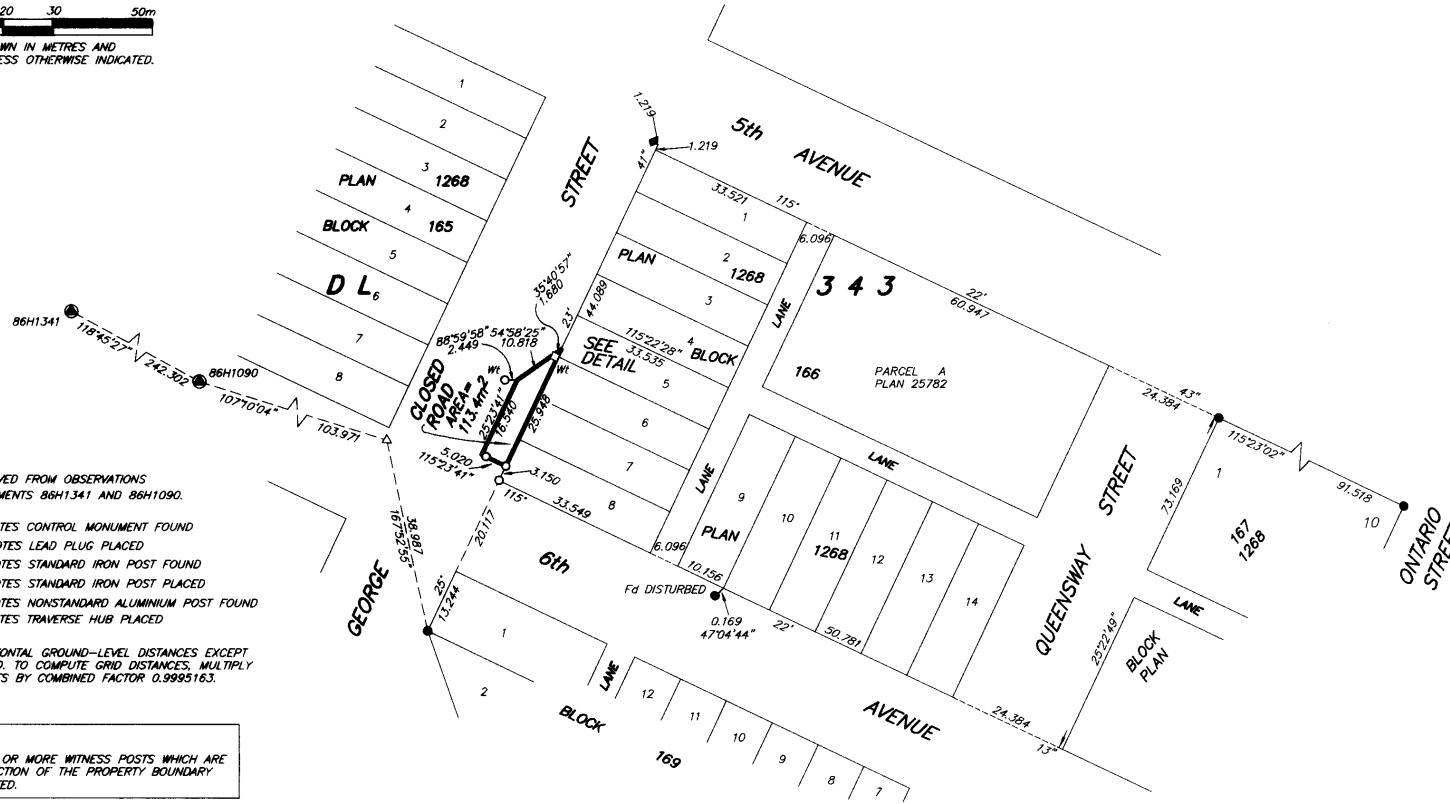
PURSUANT TO SECTION 40 OF THE COMMUNITY CHARTER AND SECTION 120 OF THE LAND TITLE ACT.

THIS PLAN LIES WITHIN INTEGRATED SURVEY AREA No. 39, PRINCE GEORGE, NAD83 (CSRS).

THE INTENDED PLOT SIZE OF THIS PLAN IS 560mm IN WIDTH BY 432mm IN HEIGHT (C SIZE) WHEN PLOTTED AT A SCALE OF 1:750



ALL DISTANCES ARE SHOWN IN METRES AND DECIMALS THEREOF, UNLESS OTHERWISE INDICATED.



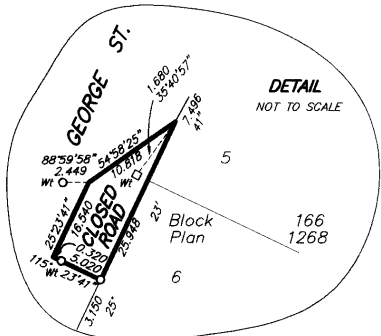
**LEGEND**

GRID BEARINGS ARE DERIVED FROM OBSERVATIONS BETWEEN CONTROL MONUMENTS 86H1341 AND 86H1090.

- DENOTES CONTROL MONUMENT FOUND
- DENOTES LEAD PLUG PLACED
- DENOTES STANDARD IRON POST FOUND
- DENOTES STANDARD IRON POST PLACED
- ◆ DENOTES NONSTANDARD ALUMINIUM POST FOUND
- △ DENOTES TRAVERSE HUB PLACED

THIS PLAN SHOWS HORIZONTAL GROUND-LEVEL DISTANCES EXCEPT WHERE OTHERWISE NOTED. TO COMPUTE GRID DISTANCES, MULTIPLY GROUND-LEVEL DISTANCES BY COMBINED FACTOR 0.9995163.

**NOTE:**  
THIS PLAN SHOWS ONE OR MORE WITNESS POSTS WHICH ARE SET ALONG THE PRODUCTION OF THE PROPERTY BOUNDARY UNLESS OTHERWISE NOTED.



I, DAVID E. STORBACK, A BRITISH COLUMBIA LAND SURVEYOR, CERTIFY THAT I WAS PRESENT AT AND PERSONALLY SUPERINTENDED THE SURVEY REPRESENTED BY THIS PLAN, AND THAT THE SURVEY AND PLAN ARE CORRECT. THE FIELD SURVEY WAS COMPLETED ON THE 24th DAY OF NOVEMBER, 2010. THE PLAN WAS COMPLETED AND CHECKED, AND THE CHECKLIST FILED UNDER #120087, ON THE 20th DAY OF FEBRUARY, 2011.

*D. Storkback* B.C.L.S.

THIS PLAN LIES WITHIN THE REGIONAL DISTRICT OF FRASER - PORT GEORGE.

PLAN BCP 48150

DEPOSITED IN THE LAND TITLE OFFICE AT NEW WESTMINSTER, BC THIS 6 DAY OF May 2011.

*Larry Blackburn per Exp:*  
REGISTRAR

ref: BB1755073

**McElhanney**  
McElhanney Associates  
Land Surveying Ltd.  
Prince George, B.C.  
Ph: (250) 561-2229 Fax: (250) 563-1941

DL 343 BLK 166	File No. 5813-RC
----------------	------------------

ORIGINAL