

PLAN BCP

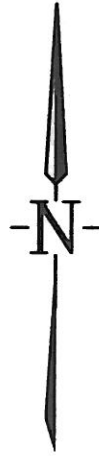
46988

DEPOSITED IN THE LAND TITLE OFFICE AT NEW WESTMINSTER, B.C.
THIS 17 DAY OF DEC 2010.

BB1299869

REGISTRAR.

REM A
PLAN 28055



D I S T R I C T L O T 7 4 5

REM 41
PLAN 17833

PLAN PGP35495

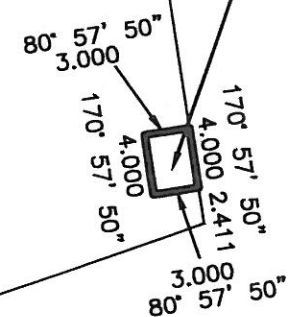
HIGHWAY 97
R/W PLAN 17452

170° 57' 50"
74.192

GREAT STREET

TERMINAL BOULEVARD

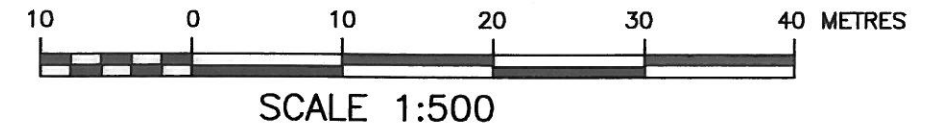
SRW AREA = 12.0m²



EXPLANATORY PLAN OF STATUTORY RIGHT OF WAY OVER PART OF LOT 41 DISTRICT LOT 745 CARIBOO DISTRICT PLAN 17833 EXCEPT PLANS 28055 AND PGP35495

PURSUANT TO SECTION 99(1)(e) OF THE LAND TITLE ACT FOR THE PURPOSE OF OVERHEAD ELECTRICAL TRANSMISSION

BCGS 93G.087



ALL DISTANCES ARE IN METRES.

ASTRONOMIC BEARINGS ARE DERIVED FROM PLAN 17833. INTEGRATED SURVEY NO. 13, CITY OF PRINCE GEORGE, NAD83 (CSRS).

THE INTENDED PLOT SIZE OF THIS PLAN IS 432mm IN WIDTH BY 280mm IN HEIGHT (B-SIZE) WHEN PLOTTED AT A SCALE OF 1:500.

THIS PLAN WAS COMPLETED AND CHECKED, AND THE CHECKLIST FILED UNDER #102529 ON THE 21st DAY OF OCTOBER, 2009 AND IS HEREBY CERTIFIED CORRECT IN ACCORDANCE WITH LAND TITLE OFFICE RECORDS.

ALAN W. COMFORT, B.C.L.S.

THIS PLAN LIES WITHIN THE FRASER-FORT GEORGE REGIONAL DISTRICT

BC HYDRO ENGINEERING
TRANSMISSION DIVISION
SURVEY SERVICES
6911 SOUTHPOINT DRIVE
BURNABY, BC, V3N4X8