

REFERENCE PLAN OF STATUTORY RIGHT OF WAY OVER PORTIONS OF LOT 1, DISTRICT LOT 2616, PLAN BCP35295, EXCEPT PLAN BCP \_\_\_\_\_; THE NORTH EAST 1/4 OF THE NORTH EAST 1/4 OF DISTRICT LOT 1600, EXCEPT PLANS PGP39628, BCP42930 AND BCP \_\_\_\_\_; LOT 1, DISTRICT LOT 905, PLAN BCP22408, EXCEPT PLAN BCP \_\_\_\_\_ AND THE NORTH WEST 1/4 OF THE NORTH WEST 1/4 OF DISTRICT LOT 2003, EXCEPT PLANS PGP39628, BCP42930 AND BCP \_\_\_\_\_; ALL IN CARIBOO DISTRICT.

PLAN NO. BCP 46244

Deposited in the Land Title Office at New Westminster this day of 201

REGISTRAR

Pursuant to Section 113 of the Land Title Act.

BCGS 93G.086

Scale: 1 : 2500 (Distances are in metres)

**NOTE**

This plan shows one or more witness posts which are set along the production of the property boundary unless otherwise noted.

This plan shows horizontal ground-level distances.

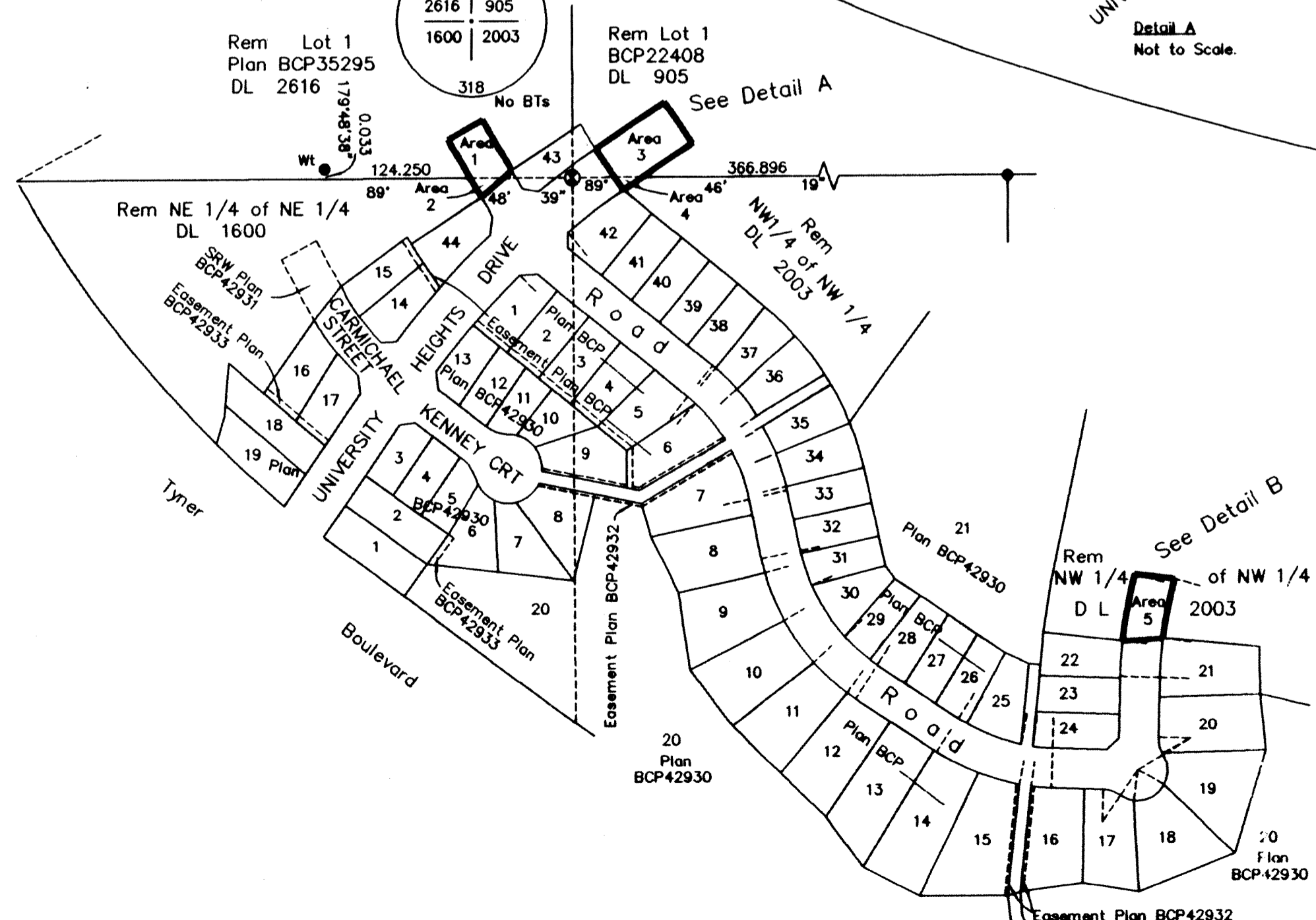
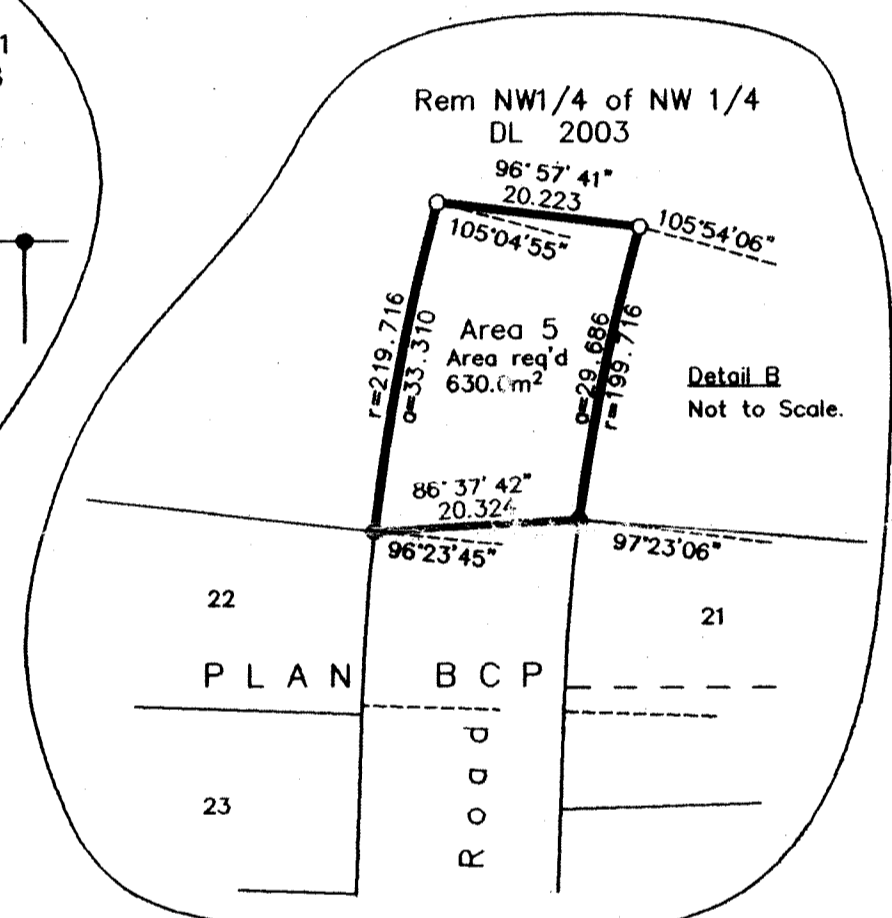
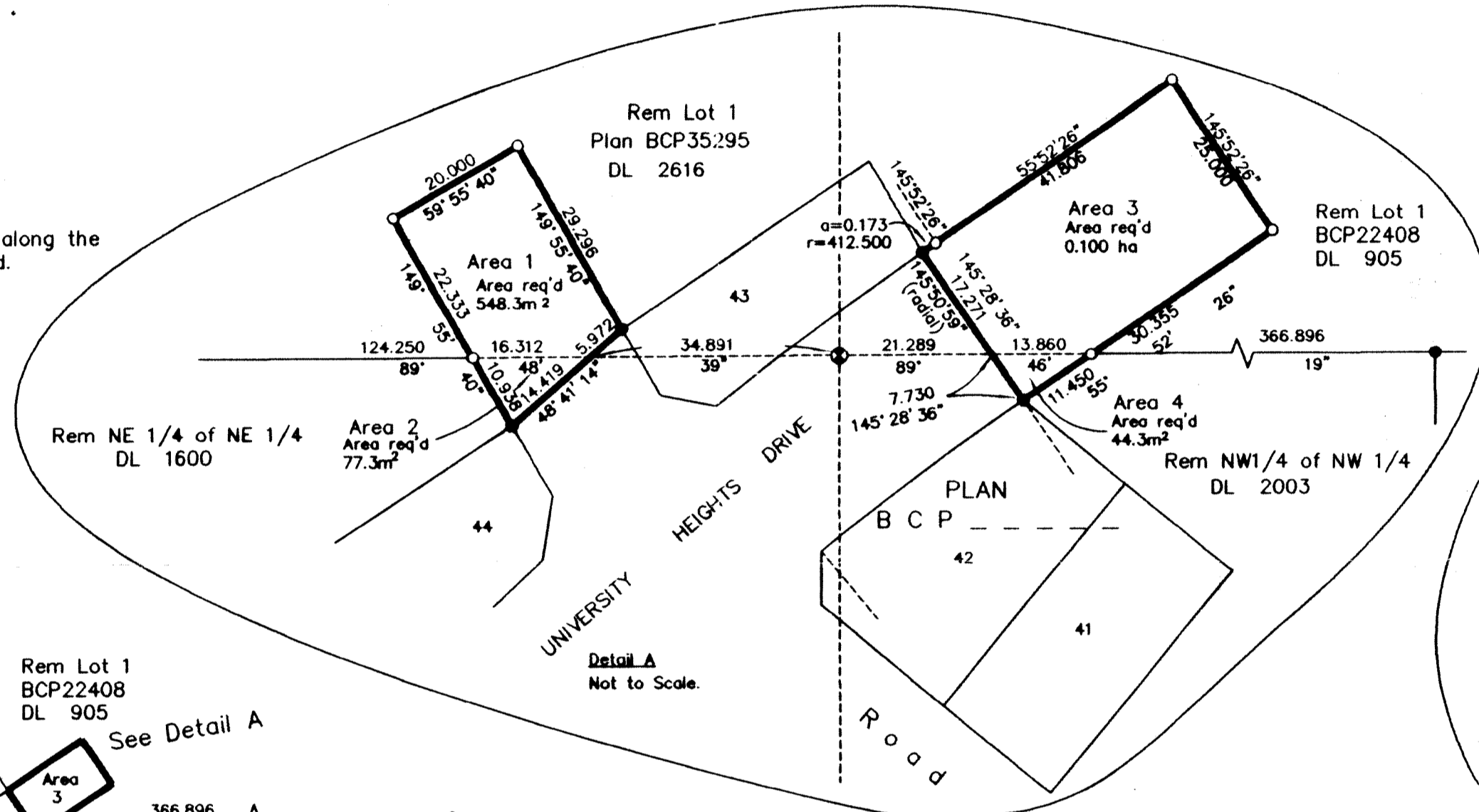
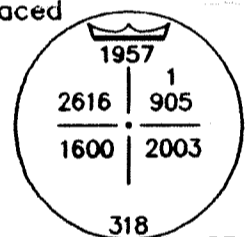
THE INTENDED PLOT SIZE OF THIS PLAN IS 560mm IN WIDTH BY 432mm IN HEIGHT (C SIZE) WHEN PLOTTED AT A SCALE OF 1:2500

50m 0 50 100 150m

Bearings are astronomic, derived from BCP \_\_\_\_\_

**LEGEND**

- Standard Capped Post Found
- Standard Iron Post Found
- Standard Iron Post Placed



I, Dale Keown, a British Columbia Land Surveyor, certify that I was present at and personally superintended the survey represented by this plan, and that the survey and plan are correct. The field survey was completed on the 7th day of September, 2010. The plan was completed and checked, and the checklist filed under #114606, on the 7th day of September, 2010.

*Dale Keown*  
Dale Keown, B.C.L.S.

BOOK OF REFERENCE	
DESCRIPTION	AREA
Area 1 - Lot 1, Plan BCP35295	548.3m <sup>2</sup>
Area 2 - Rem NE 1/4 of NE 1/4 DL 1600	77.3m <sup>2</sup>
Area 3 - Lot 1 Plan BCP22408	0.100 ha
Area 4 - Rem NW 1/4 of NW 1/4 DL 2003	44.3m <sup>2</sup>
Area 5 - Rem NW 1/4 of NW 1/4 DL 2003	630.0m <sup>2</sup>
Total - Rem NW 1/4 of NW 1/4 DL 2003	674.3m <sup>2</sup>

This plan lies within the Regional District of Fraser - Fort George.

**McElhanney Associates**  
Land Surveying Ltd.  
Prince George, B.C.  
Ph: (250) 561-2229 Fax: 563-1941

F.B.-	D.L.- 905	File No. - 5820-RW
-------	-----------	--------------------

ORIGINAL