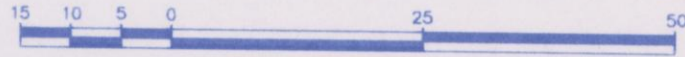


REFERENCE PLAN OF EASEMENT OVER PARTS OF
 LOTS 6, 16 and 17 DISTRICT LOT 1600,
 CARIBOO DISTRICT, PLAN BCP42930.
 BCGS 93G.086

PLAN NO. BCP *42933*
 Deposited in the Land Title Office at New
 Westminster this *20* day of *Nov.* 2009.

Pursuant to Section 99(1)(e)
 of the Land Title Act.

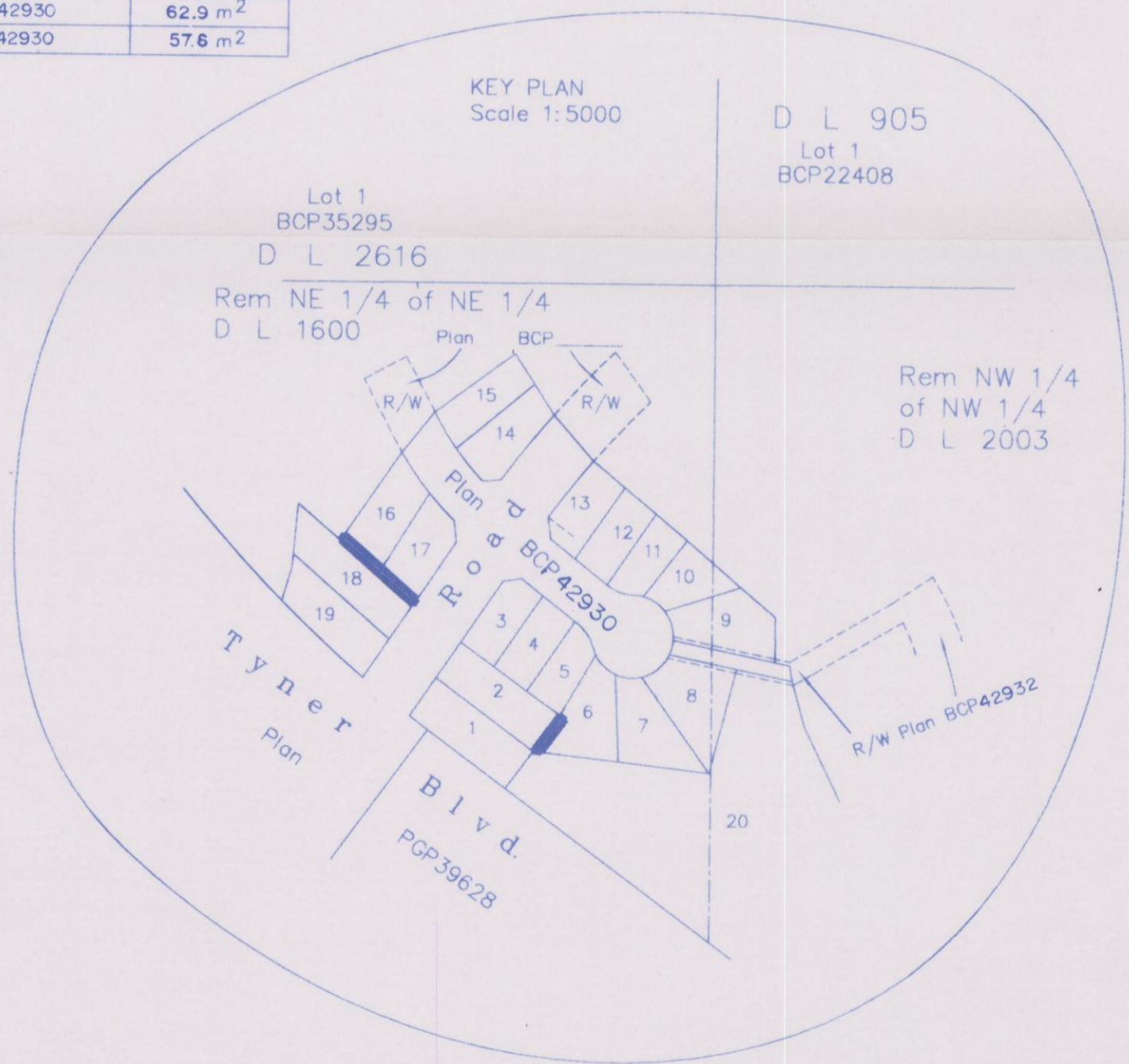
Scale: 1 : 750 (Distances are in metres)



Bearings are Grid Bearings Derived from Plan
 BCP42930

LEGEND
 ● Standard Iron Post Found

BOOK OF REFERENCE	
DESCRIPTION	AREA
Lot 6, Plan BCP42930	53.5m ²
Lot 16, Plan BCP42930	62.9 m ²
Lot 17, Plan BCP42930	57.6 m ²



REGISTRAR
REF # BB 1227382

I, Dale Keown, a British Columbia Land Surveyor, of Prince George, in British Columbia, certify that I was present at and personally superintended the survey represented by this plan, and that the survey and plan are correct. The field survey was completed on the 8th day of September, 2009. The plan was completed and checked, and the checklist filed under #101452 on the 25th day of September, 2009.

Dale Keown
 Dale Keown, B.C.L.S.

This plan lies within the Regional District
 of Fraser - Fort George.

McElhanney
 McElhanney Associates
 Land Surveying Ltd.
 Prince George, B.C.
 Ph: (250) 561-2229 Fax: 563-1941

F.B.- RA	D.L.- 1600	File No. - 5743-E
----------	------------	-------------------