

REFERENCE PLAN OF EASEMENT  
OVER PART OF LOT B, DISTRICT LOT  
2426, CARIBOO DISTRICT, PLAN BCP 42808.

PLAN NO. BCP 42809

Deposited in the Land Title Office at New  
Westminster this 5 day of November 2009.

Pursuant to Section 99(1)(e)  
of the Land Title Act.

L. Blaschuk *vc*  
REGISTRAR  
BB 1221783

BCGS 93J.006

Scale: 1 : 2000 (Distances are in metres)

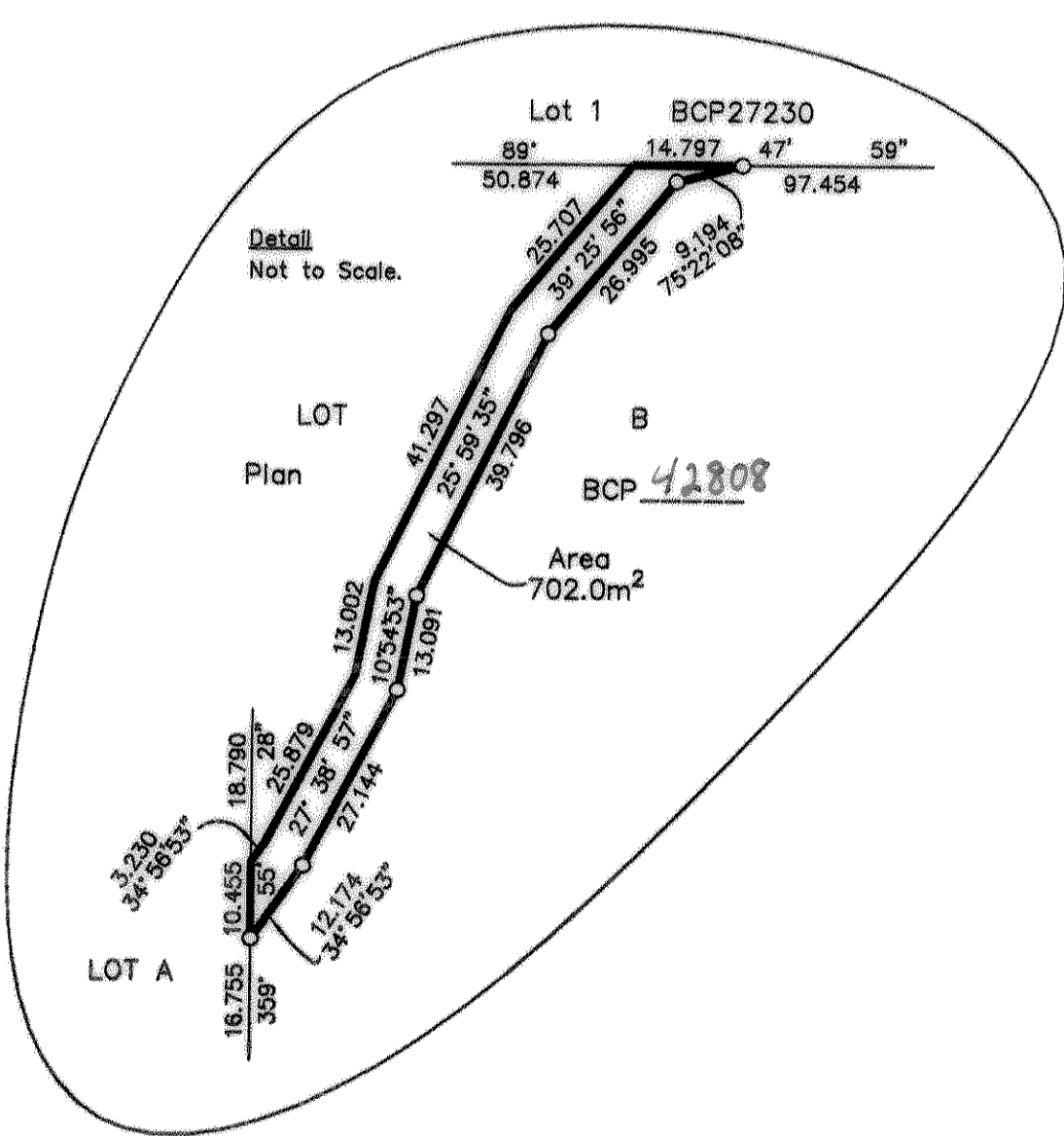
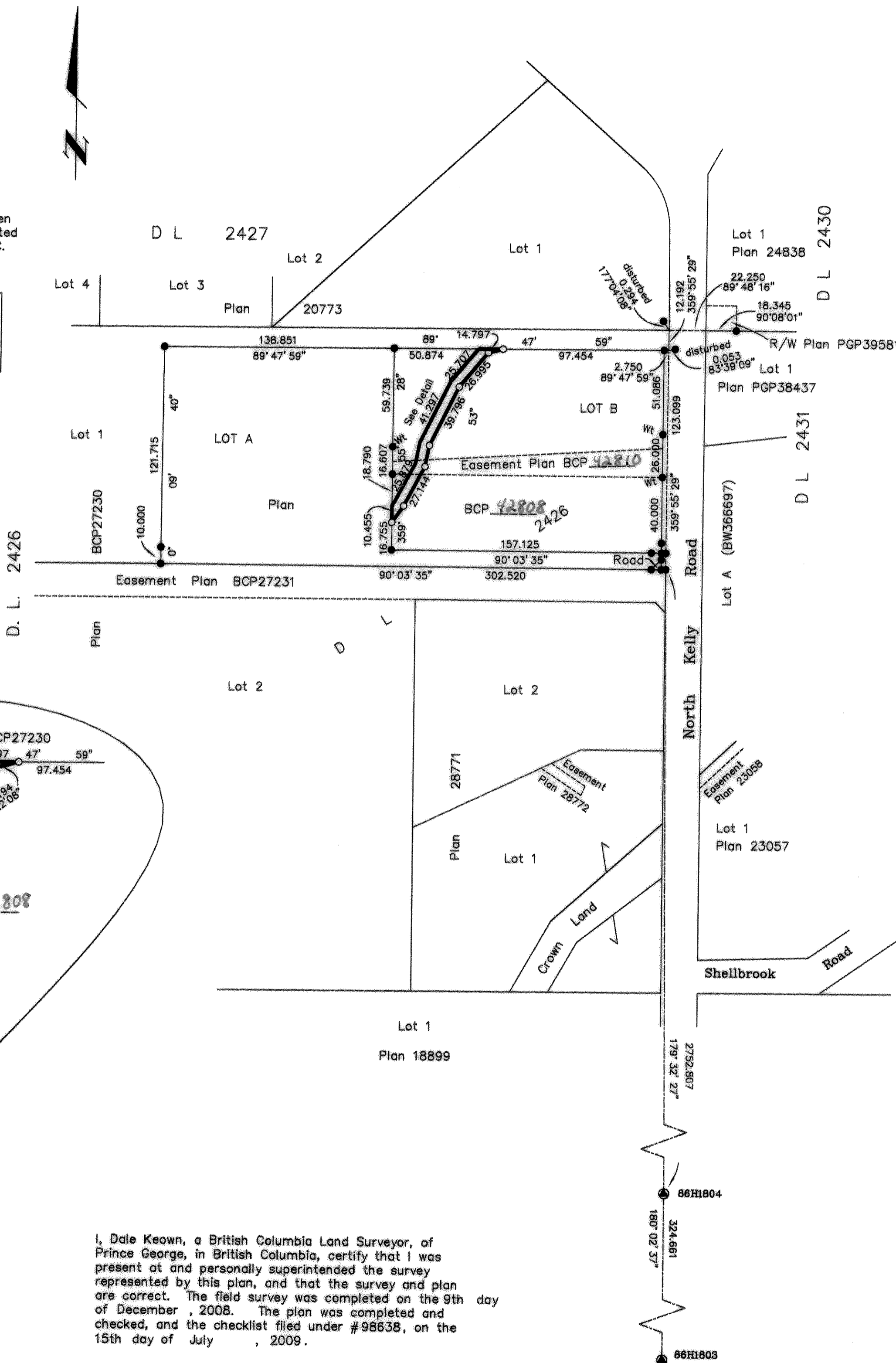


LEGEND

- Standard Iron Post Found
- Standard Iron Post Placed
- ⊙ Control Monument Found

Grid bearings are derived from observations between  
control monuments 86H1804 and 86H1803, integrated  
survey area number 39, City of Prince George, B.C.  
NAD83(CSRS)

Note:  
This plan shows horizontal ground-level  
distances except where otherwise noted.  
To compute grid distances, multiply ground-level  
distances by combined factor 0.9994853



I, Dale Keown, a British Columbia Land Surveyor, of  
Prince George, in British Columbia, certify that I was  
present at and personally superintended the survey  
represented by this plan, and that the survey and plan  
are correct. The field survey was completed on the 9th day  
of December, 2008. The plan was completed and  
checked, and the checklist filed under #98638, on the  
15th day of July, 2009.

Dale Keown  
Dale Keown, B.C.L.S.

This plan lies within the Fraser-Fort  
George Regional District.

**McElhanney**  
McElhanney Associates  
Land Surveying Ltd.  
Prince George, B.C.  
Ph: (250) 562-1196 Fax: 563-1941

F.B.- RA	D.L.- 2426	File No. -05694-E2
----------	------------	--------------------