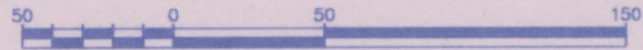


EXPLANATORY PLAN OF LEASE OF PART OF THE MAIN FLOOR OF A ONE STORY BUILDING LOCATED ON PARCEL A, DISTRICT LOTS 1430, 8172, 8173, 8176 AND 8180, CARIBOO DISTRICT, PLAN PGP43619.

Pursuant to Section 99(1)(k) of the Land Title Act.

B.C.G.S. 93G.087

Scale: 1 : 2500 (Distances are in metres)



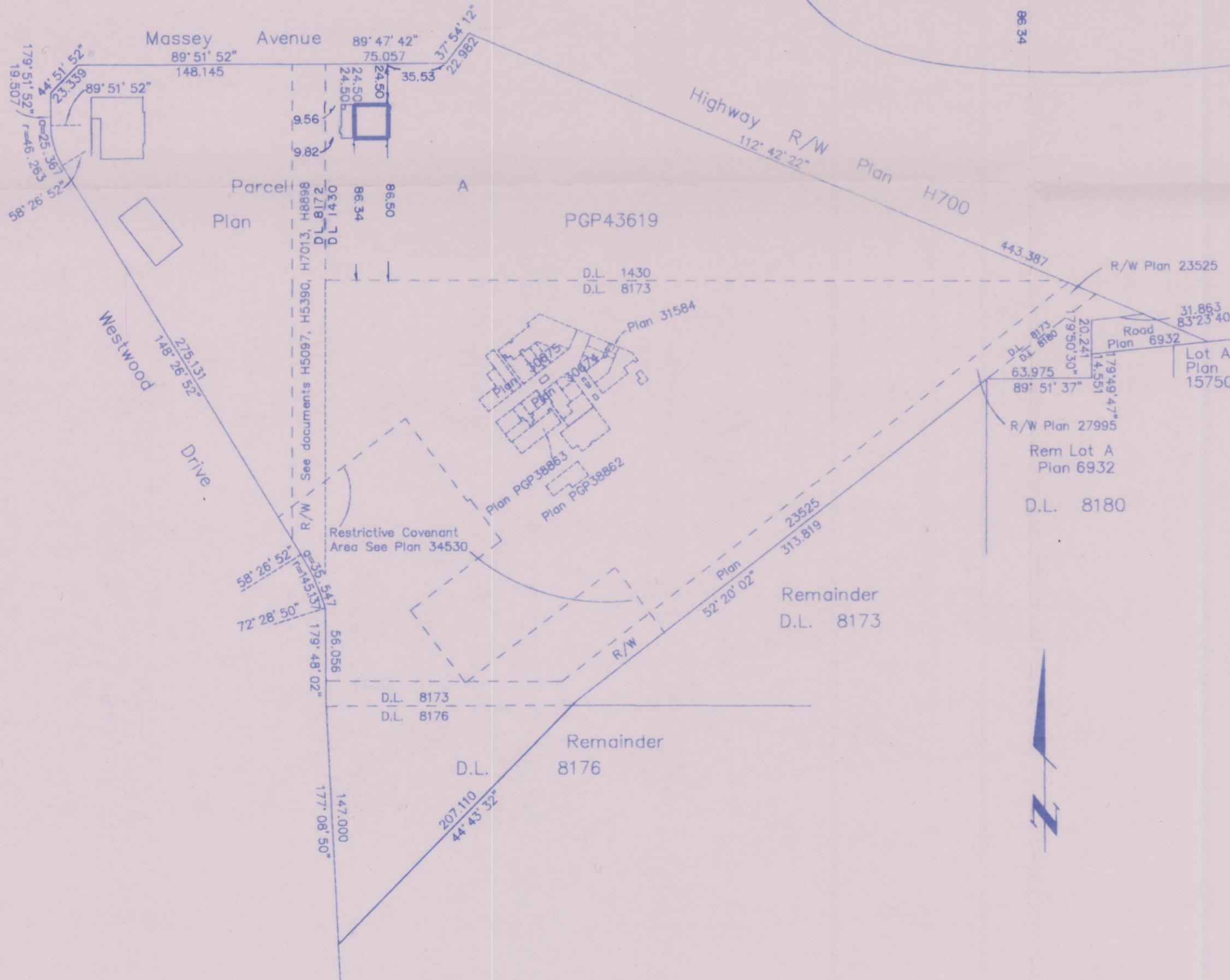
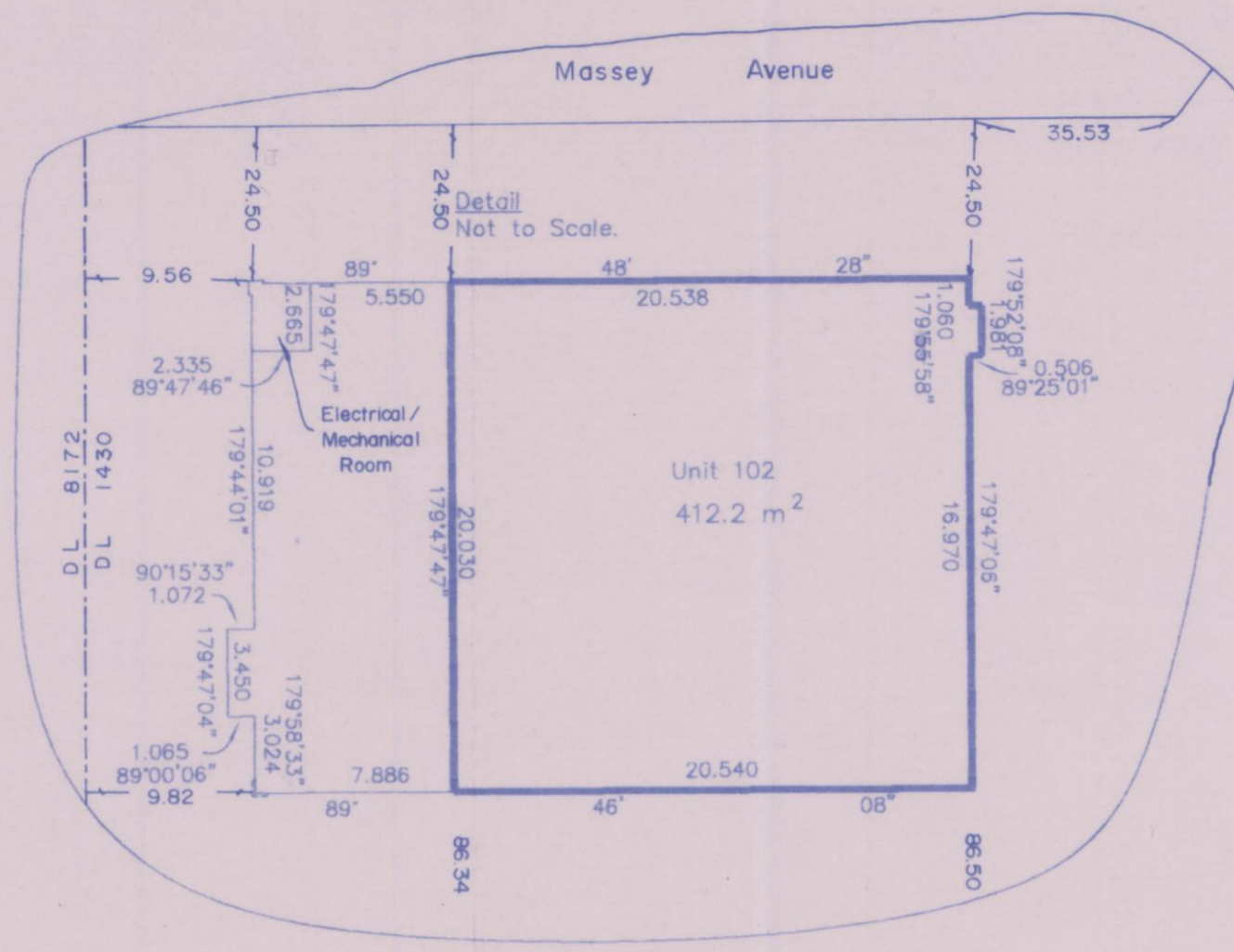
Bearings are astronomic, derived from Plan PGP43619.

PLAN NO. BCP 42745

Deposited in the Land Title Office at New Westminster this 30th day of November 2007.

L. Blaschuk

REGISTRAR



Certified Correct, according to Land Title Office Records. This 16th day of April, 2007. The plan was completed and checked, and the checklist filed under #63784, on the 30th day of April, 2007.

Dale Keown

Dale Keown, B.C.L.S.

This plan lies within the Fraser-Fort George Regional District.

McElhanney
McElhanney Associates
Land Surveying Ltd.
Prince George, B.C.

Ph: (250) 562-1196 Fax: 563-1941

F.B.- D.L.- 1430 File No. -5462-47A