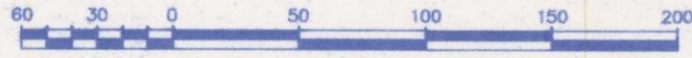


REFERENCE PLAN OF EASEMENT OVER
PART OF LOT 3, DISTRICT LOT 752,
CARIBOO DISTRICT, PLAN BCP 41694.

BCGS 93G.087

Pursuant to Section 99(1)(e)
of the Land Title Act.

Scale: 1 : 3000 (Distances are in metres)



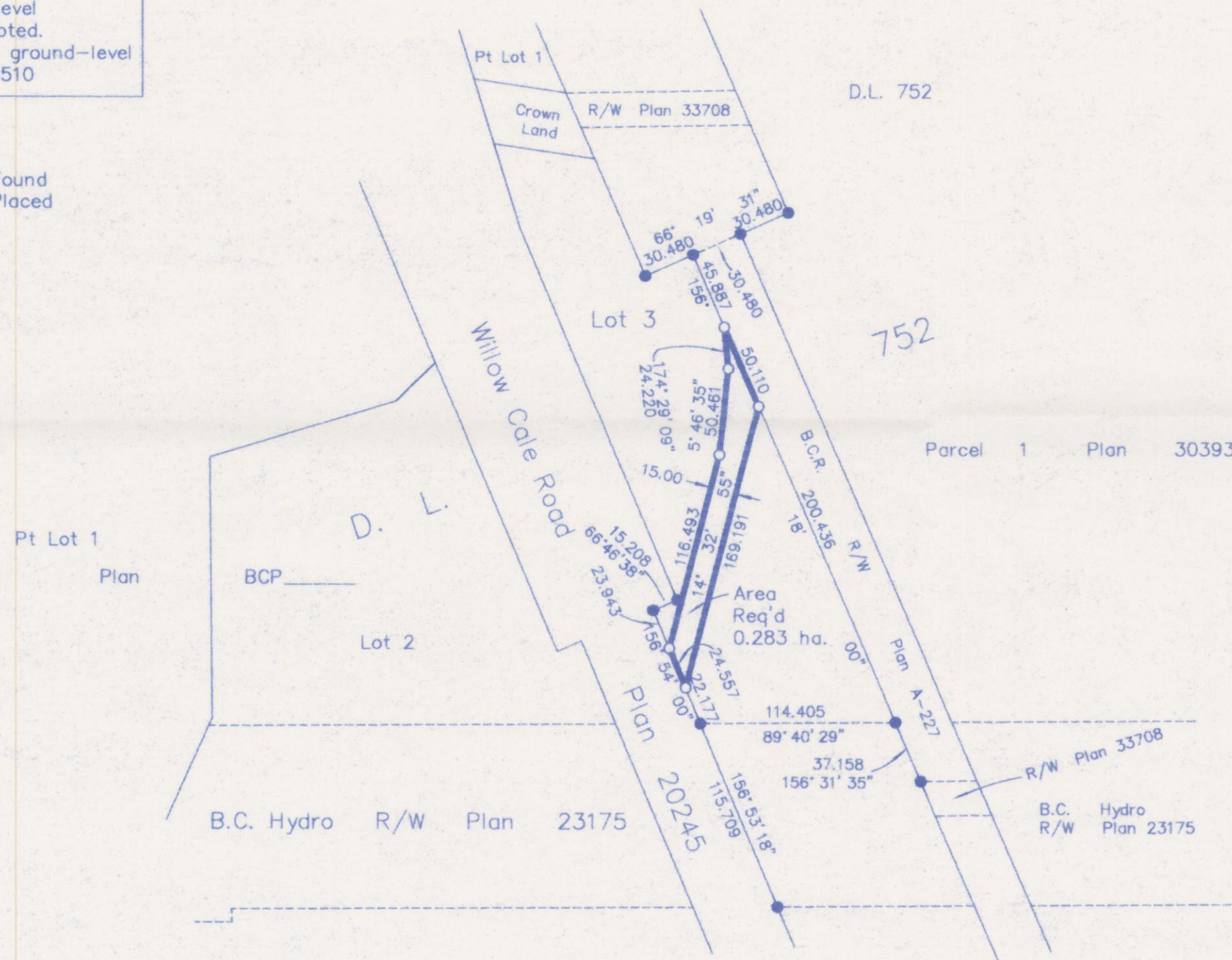
Integrated Survey Area No. 39, City of Prince George
NAD83(CSRS).

Grid bearings are derived from Plan BCP _____

Note:
This plan shows horizontal ground-level
distances except where otherwise noted.
To compute grid distances, multiply ground-level
distances by combined factor 0.999510

LEGEND

- Standard Iron Post Found
- Standard Iron Post Placed



PLAN NO. BCP _____ 41696

Deposited in the Land Title Office at New
Westminster this 27 day of July 2009.

REGISTRAR

ref: BB1092885

I, Gordon Kilbride, a British Columbia Land Surveyor, of
Prince George, in British Columbia, certify that I was
present at and personally superintended the survey
represented by this plan, and that the survey and plan
are correct. The field survey was completed on the 24 day
of April, 2009. The plan was completed and
checked, and the checklist filed under #95852, on the
1 day of May, 2009.

Gordon Kilbride
Gordon Kilbride, B.C.L.S.

Reviewed and verified correct

R. Dawson
Supervisor Survey and Crossing
BCR Properties Ltd. # 879 A2

This plan lies within the Regional
District of Fraser-Fort George.

McElhanney
McElhanney Associates
Land Surveying Ltd.
Prince George, B.C.

Ph: (250) 561-2229 Fax: 563-1941

F.B.- RA D.L.- 752 File No. -5353-E2