

REFERENCE PLAN OF EASEMENT OVER PART OF LOT 1
 PLAN BCP 41328 AND THAT PART OF PARCEL 1, DISTRICT
 LOTS 745 AND 747, CARIBOO DISTRICT, PLAN 34384 AS
 SHOWN ON PLAN PGP35183, EXCEPT PLANS PGP36014, PGP36015
 BCP10773, BCP38932 AND BCP 41328.

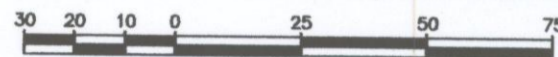
PLAN NO. BCP _____ 41334

Deposited in the Land Title Office at New
 Westminster this 22 day of JUNE 2009.

Pursuant to Section 99(1)(e)
 of the Land Title Act.

BCGS 93G.087

Scale: 1 : 1500 (Distances are in metres)



Bearings are grid bearings, derived from
 BCP _____

LEGEND

- Standard Iron Post Found
- Standard Iron Post Placed



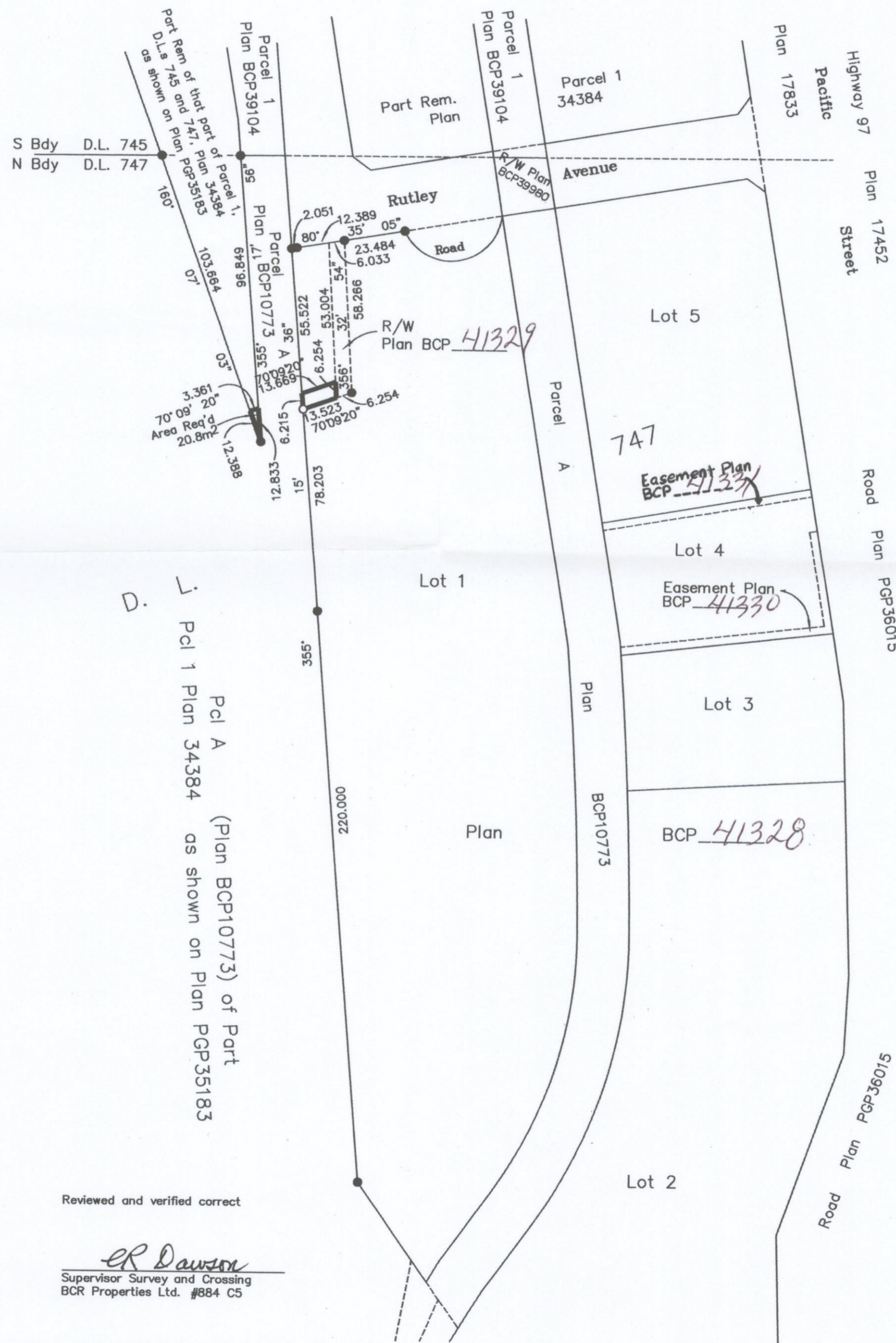
BOOK OF REFERENCE	
DESCRIPTION	AREA
Rem Pcl 1, Plan 34384 as shown on PGP35183	20.8 m ²
Lot 1, Plan BCP <u>41328</u>	100.3 m ²

I, Dale Keown, a British Columbia Land Surveyor, of
 Prince George, in British Columbia, certify that I was
 present at and personally superintended the survey
 represented by this plan, and that the survey and plan
 are correct. The field survey was completed on the 25th day
 of September, 2008. The plan was completed and
 checked, and the checklist filed under #88763, on the
 22nd day of October, 2008.

Dale Keown
 Dale Keown, B.C.L.S.

Reviewed and verified correct

ER Dawson
 Supervisor Survey and Crossing
 BCR Properties Ltd. #884 CS



REGISTRAR

REF. # BB 945972

This plan lies within the Regional
 District of Fraser-Fort George.

McElhanney
 McElhanney Associates
 Land Surveying Ltd.
 Prince George, B.C.

Ph: (250) 561-2229 Fax: 563-1941

F.B.- D.L.- 747 File No. - 5347-3E