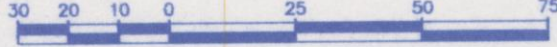


REFERENCE PLAN OF EASEMENT  
OVER PART OF PARCEL A (PLAN BCP10773) OF PART  
PARCEL 1, DISTRICT LOT 747, CARIBOO DISTRICT, PLAN  
34384 AS SHOWN ON PLAN PGP35183.

Pursuant to Section 99(1)(e)  
of the Land Title Act.

BCGS 93G.087

Scale: 1 : 1500 (Distances are in metres)

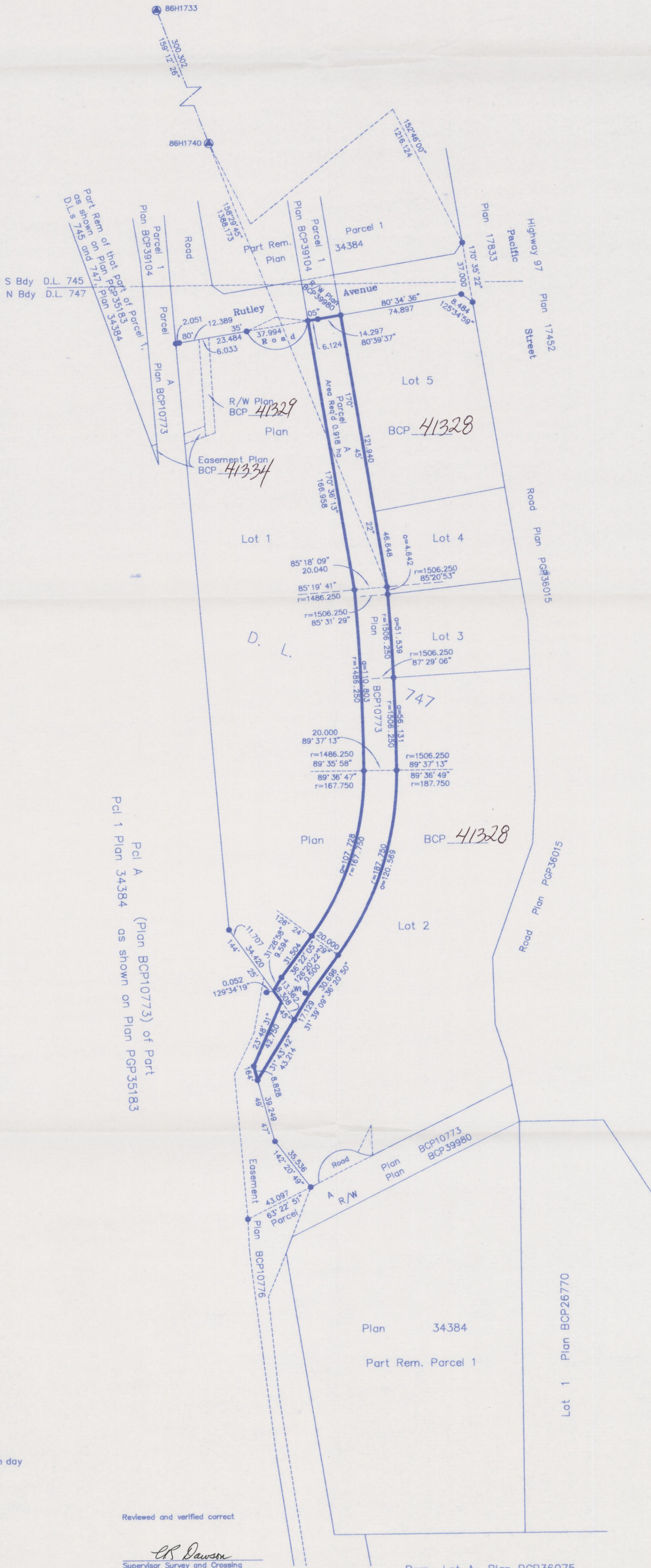


Integrated Survey Area No. 39, City of Prince George  
NAD83(CSRS).

Grid bearings are derived from observations between  
geodetic control monuments 86H1733 and 86H1740.

Note:  
This plan shows horizontal ground-level  
distances except where otherwise noted.  
To compute grid distances, multiply ground-level  
distances by combined factor 0.9995130

LEGEND  
● Standard Iron Post Found  
● Control Monument Found



I, Dale Keown, a British Columbia Land Surveyor, of  
Prince George, in British Columbia, certify that I was  
present at and personally superintended the survey  
represented by this plan, and that the survey and plan  
are correct. The field survey was completed on the 25th day  
of September, 2008. The plan was completed and  
checked, and the checklist filed under # 95617, on the  
27th day of April, 2009.

*Dale Keown*  
Dale Keown, B.C.L.S.

Reviewed and verified correct

*CR Dawson*  
Supervisor Survey and Crossing  
BCR Properties Ltd. 884 C10

Rem Lot A Plan PGP36075

PLAN NO. BCP 41333

Deposited in the Land Title Office at New  
Westminster this 22 day of JUNE 2009

REGISTRAR

REF. #BB945969

This plan lies within the Regional  
District of Fraser-Fort George.

**McElhanney**  
McElhanney Associates  
Land Surveying Ltd.  
Prince George, B.C.  
Ph: (250) 561-2229 Fax: 563-1941

F.B.- XT & RA D.L.- 747 File No. -5347-6E