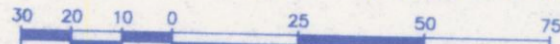


REFERENCE PLAN TO ACCOMPANY A COVENANT
 OVER PART OF PARCEL 1, DISTRICT LOTS 745 AND 747,
 CARIBOO DISTRICT, PLAN 34384, EXCEPT PLANS PGP35183,
 PGP36014, PGP36015, PGP36075, PGP36481,
 PGP42972, PGP44172, PGP45387, BCP38207 AND BCP38932.

Pursuant to Section 99(1)(e)
 of the Land Title Act.

BCGS 93G.087

Scale: 1 : 1500 (Distances are in metres)



Integrated Survey Area No. 39, City of Prince George
 NAD83(CSRS).

Grid bearings are derived from observations between
 geodetic control monuments 86H1733 and 86H1740.

Note:

This plan shows horizontal ground-level
 distances except where otherwise noted.
 To compute grid distances, multiply ground-level
 distances by combined factor 0.9995130.

LEGEND

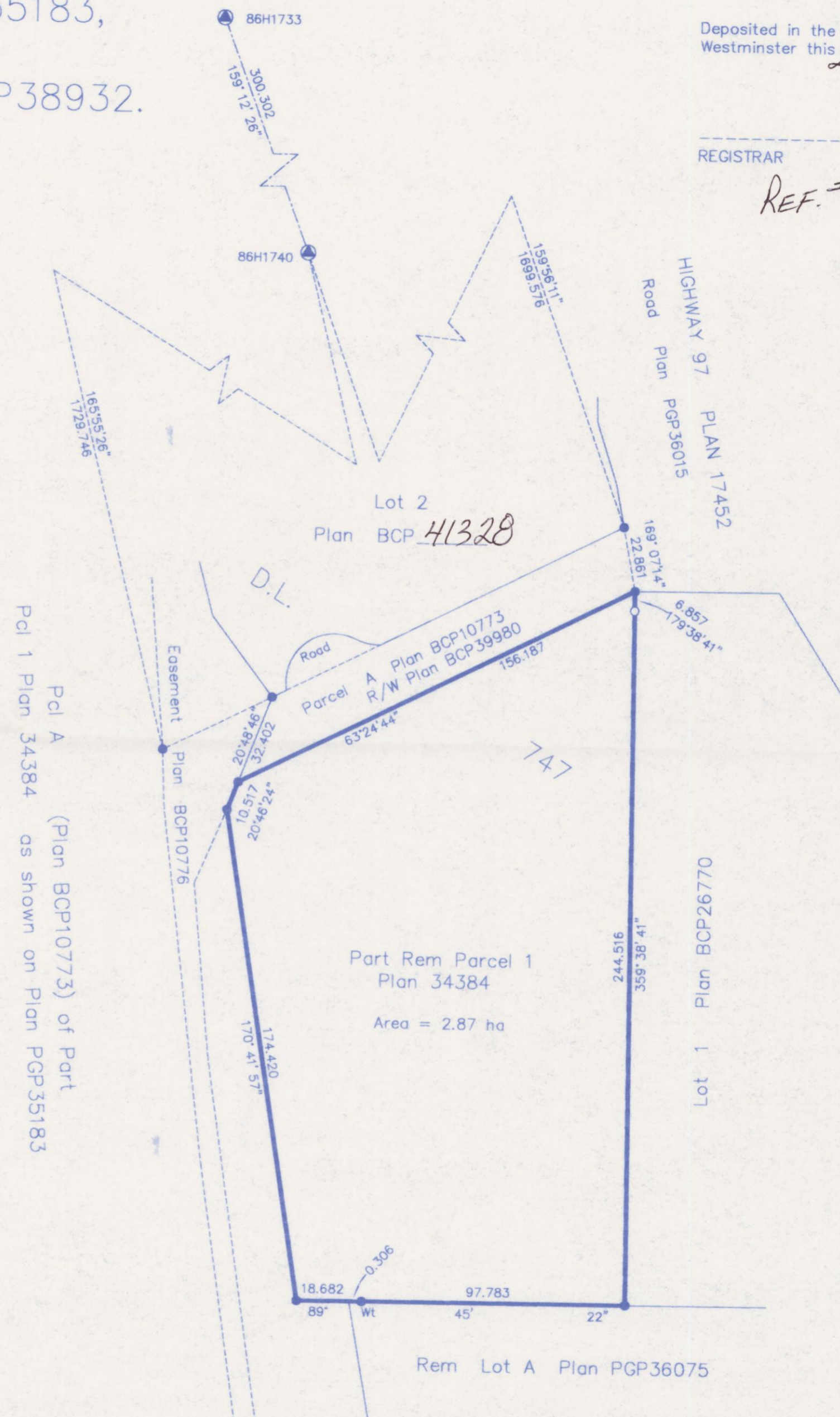
- Standard Iron Post Found
- Standard Iron Post Placed
- ▲ Control Monument Found

PLAN NO. BCP 41328

Deposited in the Land Title Office at New
 Westminster this 22 day of JUNE 2009

REGISTRAR

REF. # BB 945952



I, Dale Keown, a British Columbia Land Surveyor, of
 Prince George, in British Columbia, certify that I was
 present at and personally superintended the survey
 represented by this plan, and that the survey and plan
 are correct. The field survey was completed on the 5th day
 of June, 2009. The plan was completed and
 checked, and the checklist filed under #97193, on the
 5th day of June, 2009.

Dale Keown

Dale Keown, B.C.L.S.

Reviewed and verified correct

CR Dawson
 Supervisor Survey and Crossing
 BCR Properties Ltd. # 884C11

This plan lies within the Regional
 District of Fraser-Fort George.

McElhanney
 McElhanney Associates
 Land Surveying Ltd.
 Prince George, B.C.
 Ph: (250) 561-2229 Fax: 563-1941

F.B.- XT63 D.L.- 747 File No. -5347-C1