

EXPLANATORY PLAN OF EASEMENT TO ACCOMPANY
AN ENCROACHMENT AGREEMENT ON PART OF
LOT 10, BLOCK 180, DISTRICT LOT 343,
CARIBOO DISTRICT, PLAN 1268.

Pursuant to Section 99(1)(e)
of the Land Title Act.

BCGS 93G.097

PLAN NO. BCP 40710

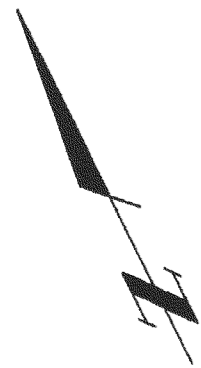
Deposited in the Land Title Office at New
Westminster this 24 day of APRIL 2009.

LARRY BLASCHUK *jun*

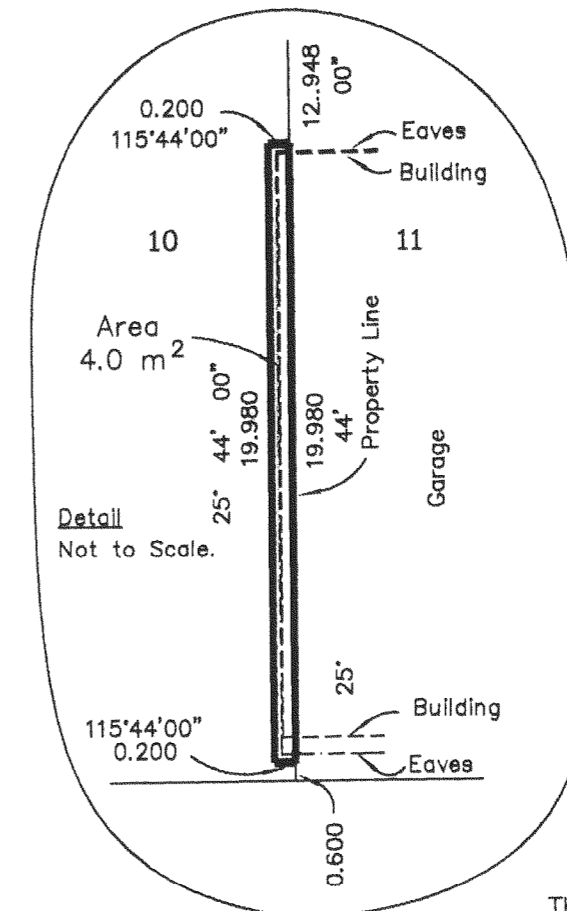
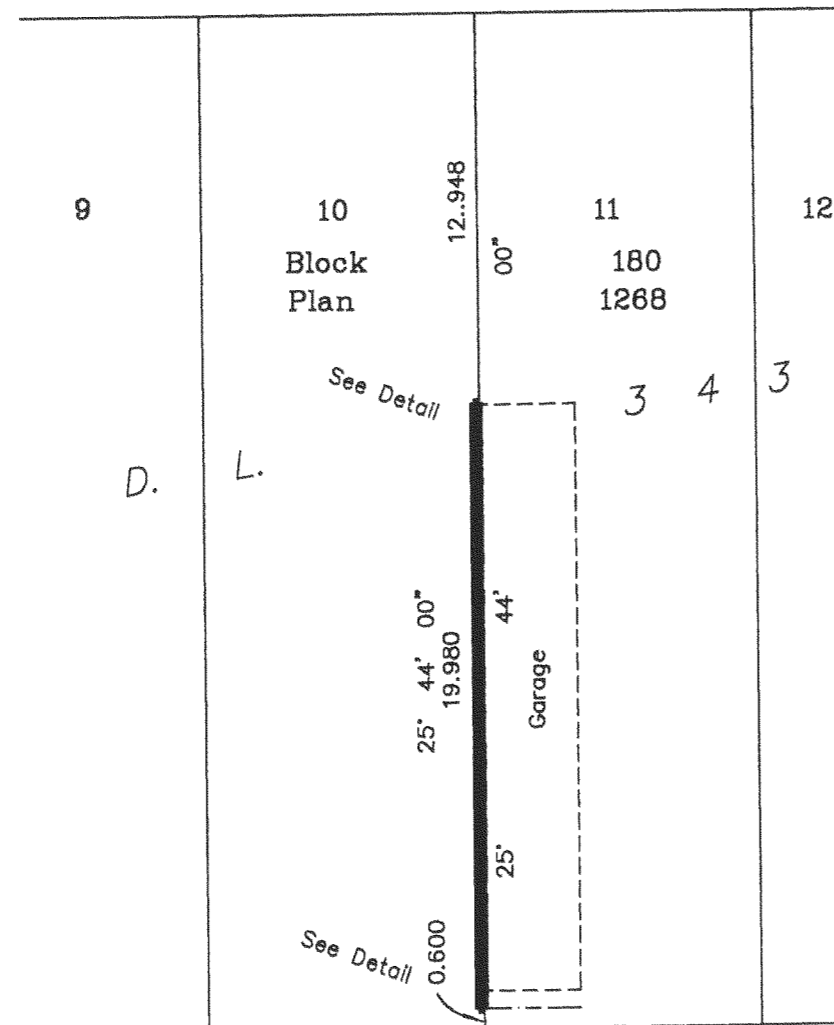
REGISTRAR

REF: BB 935105

Scale: 1 : 250 (Distances are in metres)



Seventh Avenue



Certified Correct, according to Land Title
Office Records.
The plan was completed and checked, and
the checklist filed under #95456, on the
22 day of April, 2009.

Gordon Kilbride

Gordon Kilbride, B.C.L.S.

Lane

This plan lies within the Regional District
of Fraser - Fort George.

McElhanney
McElhanney Associates
Land Surveying Ltd.

Prince George, B.C.

Ph: (250) 561-2229 Fax: 563-1941

F.B.- RA 5671-133 | D.L.- 343 | File No. - 5732-1