

Deposited in the Land Title Office at New Westminster this 21 day of April 2009.

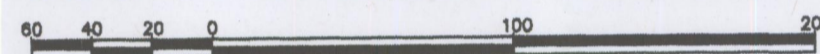
*I. Blaschuk p.c./m*  
REGISTRAR  
B3934456

REFERENCE PLAN OF STATUTORY RIGHT OF WAY OVER PART OF PARCEL A (PLAN BCP10773) OF PART OF PARCEL 1, DISTRICT LOT 747, CARIBOO DISTRICT, PLAN 34384; AS SHOWN ON PLAN PGP35183.

Pursuant to Section 113 of the Land Title Act.

B.C.G.S. 93G.087

Scale: 1 : 2500 (Distances in metres)

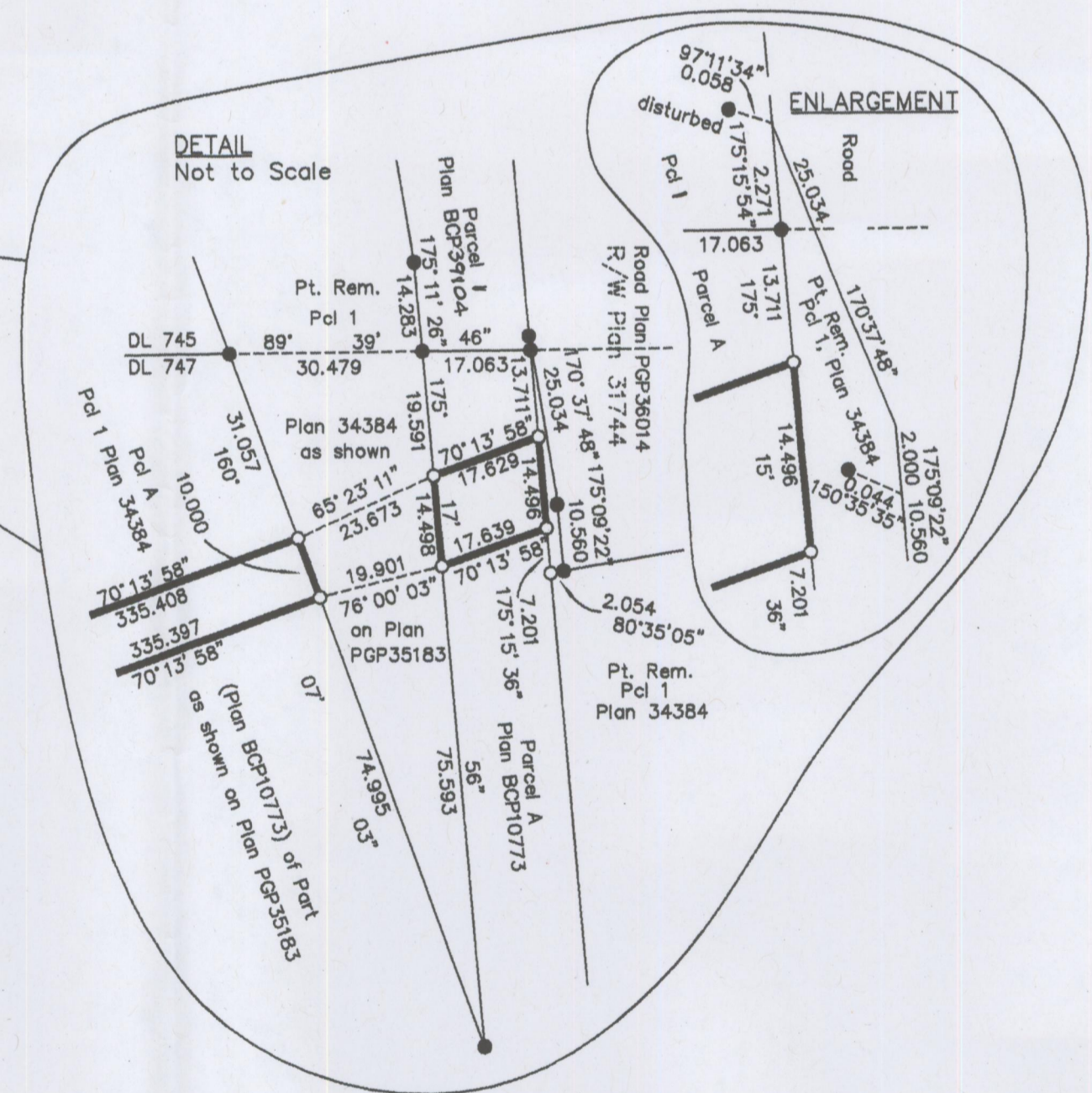


Grid bearings are derived from observations between control monuments 86H1740 and 86H1733, integrated survey area number 39, City of Prince George, B.C. NAD83(CSRS)

Note: This plan shows ground level measured distances. Prior to computation of U.T.M. co-ordinates multiply by the combined factor 0.9995128

LEGEND

- Standard Iron Post Found
- Standard Iron Post Placed
- ⊙ Control Monument Found



I, Dale Keown, a British Columbia Land Surveyor, of Prince George, in British Columbia, certify that I was present at and personally supervised the survey represented by this plan, and that the survey and plan are correct. The field survey was completed on the 2nd day of May, 2008. The plan was completed and checked, and the checklist filed under #81784, on the 29th day of May, 2008.

*Dale Keown*  
Dale Keown, B.C.L.S.

Reviewed and verified correct

*R. Dawson*  
Supervisor Survey and Crossing  
BCR Properties Ltd. #884-B1

This plan lies within the Fraser-Fort George Regional District.

**McElhenney**  
McElhenney Associates  
Land Surveying Ltd.  
Prince George, B.C.  
Ph: (250) 562-1196 Fax: 563-1941

F.B.- RA	D.L.- 747	File No. - 5346RW
----------	-----------	-------------------