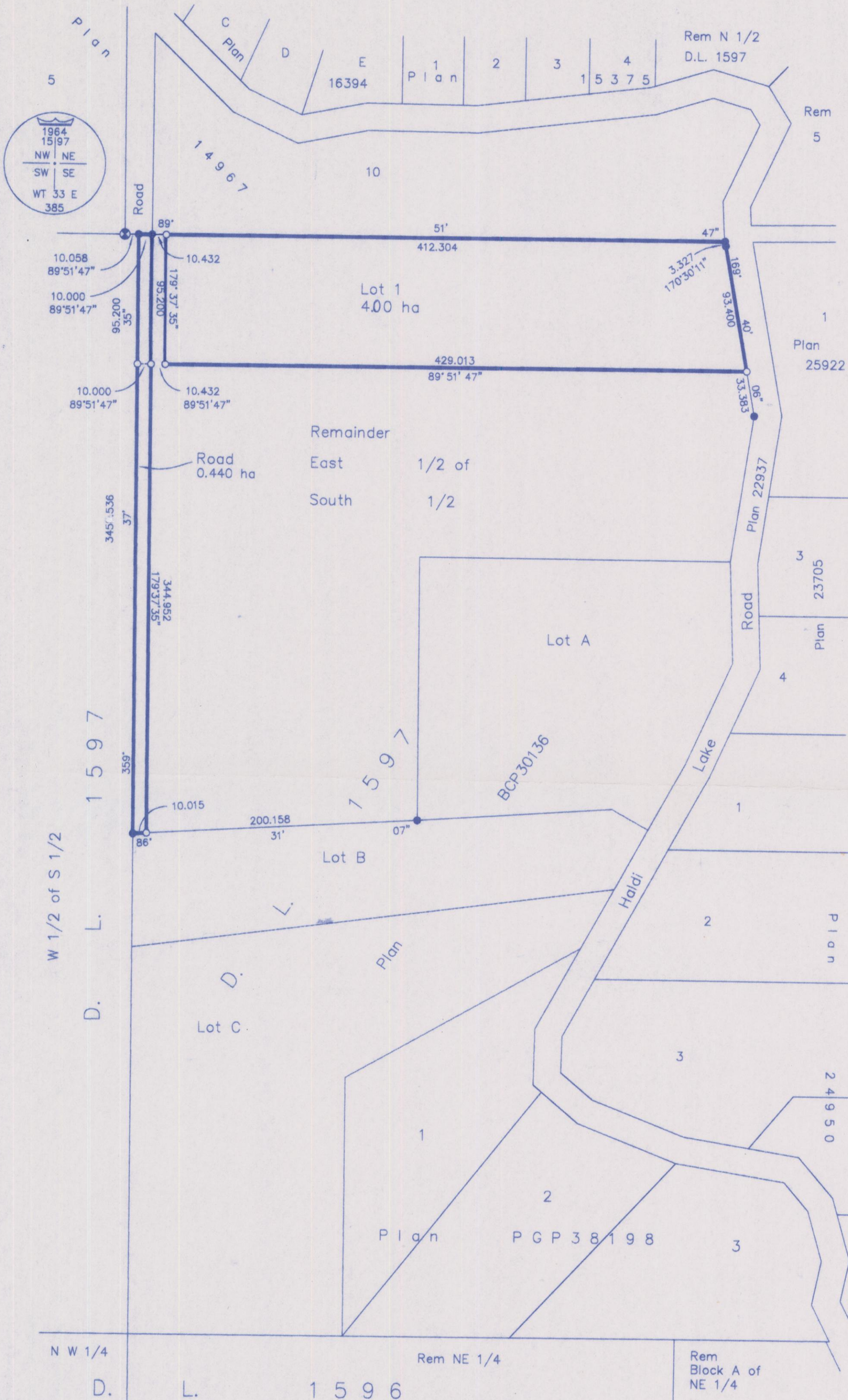


Deposited in the Land Title Office at New Westminster this 13<sup>th</sup> day of March 2009.

REGISTRAR

BB1056777



SUBDIVISION PLAN OF PART OF THE EAST 1/2 OF THE SOUTH 1/2 OF DISTRICT LOT 1597, CARIBOO DISTRICT, EXCEPT PLANS 22937, PGP38198, AND BCP30136.  
B.C.G.S. 93G.086

Scale: 1 : 2500 (Distances are in metres)



Integrated Survey Area No. 39, City of Prince George, NAD83(CSRS).

Note: This plan shows horizontal ground-level distances except where otherwise noted. To compute grid distances, multiply ground-level distances by combined factor 0.9994846

Bearings are astronomic, derived from Plan BCP30136 = 89°51'47"

LEGEND

- Standard Capped Post Found
- Standard Iron Post Found
- Standard Iron Post Placed

I, Gordon Kilbride, a British Columbia Land Surveyor, of Prince George, in British Columbia, certify that I was present at and personally superintended the survey represented by this plan, and that the survey and plan are correct. The field survey was completed on the 10 day of February, 2009. The plan was completed and checked, and the checklist filed under #93171, on the 16 day of February, 2009.

*Gordon Kilbride*  
Gordon Kilbride, B.C.L.S.

Pursuant to Section 5-5 of the General Survey Instruction Rules, this survey need not be integrated with survey control.

*[Signature]*

For Surveyor General Victoria, BC This 20<sup>th</sup> day of February, 2009.  
FILE: 10440-07-001

Owner: *[Signature]*  
Clyde Smaaslet  
Witness: *[Signature]*  
Laurie Neerin  
Print Name  
1633 First Avenue  
Address  
Prince George BC V2L 2Y8  
Postal Code  
Administrative Assistant  
Occupation

Approved under the Land Title Act this 4<sup>th</sup> day of March, 2009

*[Signature]*  
Approving Officer  
City of Prince George

This plan lies within the Regional District of Fraser-Fort George.

**McElhanney**  
McElhanney Associates  
Land Surveying Ltd.  
Prince George, B.C.

Ph: (250) 561-2229 Fax: 563-1941

F.B.- RA D.L.- 1597 File No. - 5590-S