

REFERENCE PLAN OF  
 EASEMENT OVER PART OF  
 PARCEL 1, DISTRICT LOT 1433,  
 CARIBOO DISTRICT,  
 PLAN BCP35370, EXCEPT  
 PLAN BCS 3328.

PLAN NO. BCP 39992

Deposited in the Land Title Office at New  
 Westminster this 19 day of Feb 2009.

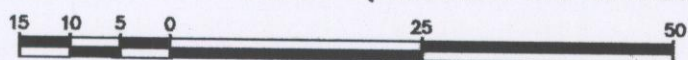
Pursuant to Section 99(1)(e)  
 of the Land Title Act.

REGISTRAR

BB923045

BCGS 93G.097

Scale: 1 : 750 (Distances are in metres)



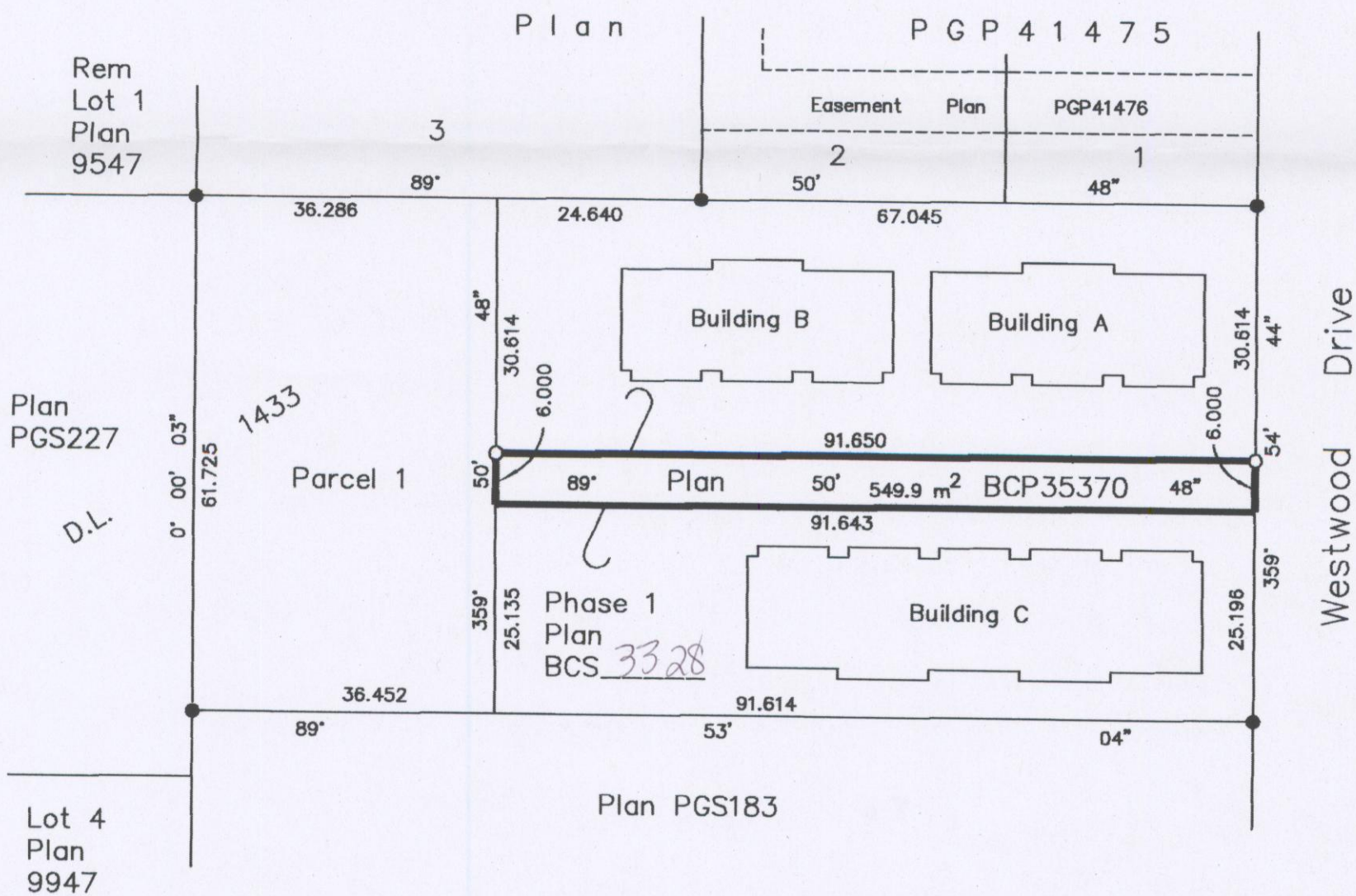
Bearings are grid, derived from Plan BCP35370  
 Integrated Survey Area No. 39, City of Prince George  
 NAD83(CSRS).

Note: This plan shows horizontal ground-level  
 distances except where otherwise noted.  
 To compute grid distances, multiply ground-level  
 distances by combined factor 0.9999097



**LEGEND**

- Standard Iron Post Found
- Standard Iron Post Set



I, Gordon Kilbride, a British Columbia Land Surveyor, of  
 Prince George, in British Columbia, certify that I was  
 present at and personally supervised the survey  
 represented by this plan, and that the survey and plan  
 are correct. The field survey was completed on the 23 day  
 of October, 2008. The plan was completed and  
 checked, and the checklist filed under #89035, on the  
 28 day of October, 2008.

This plan lies within the Regional District  
 of Fraser - Fort George.

*Gordon Kilbride*  
 Gordon Kilbride, B.C.L.S.

**McElhanney**  
 McElhanney Associates  
 Land Surveying Ltd.  
 Prince George, B.C.

Ph: (250) 561-2229 Fax: 563-1941

F.B.- RA      D.L.- 1433      File No. - 5600-E