

EXPLANATORY PLAN OF EASEMENT OVER  
A PORTION OF LOT A, DISTRICT LOT 1421,  
CARIBOO DISTRICT, PLAN PGP43474.

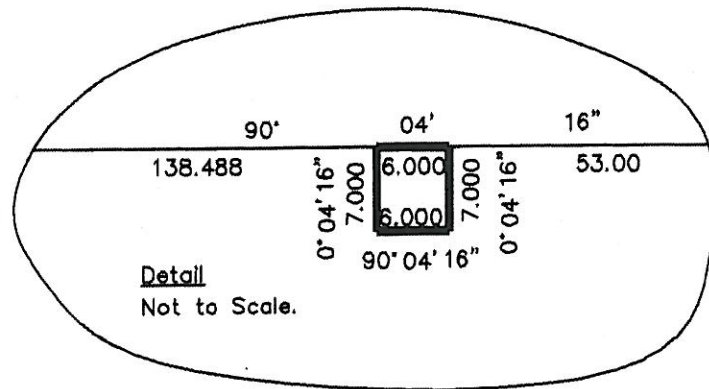
Pursuant to Section 99(1)(e)  
of the Land Title Act.

BCGS 93G.083

Scale: 1 : 2500 (Distances are in metres)

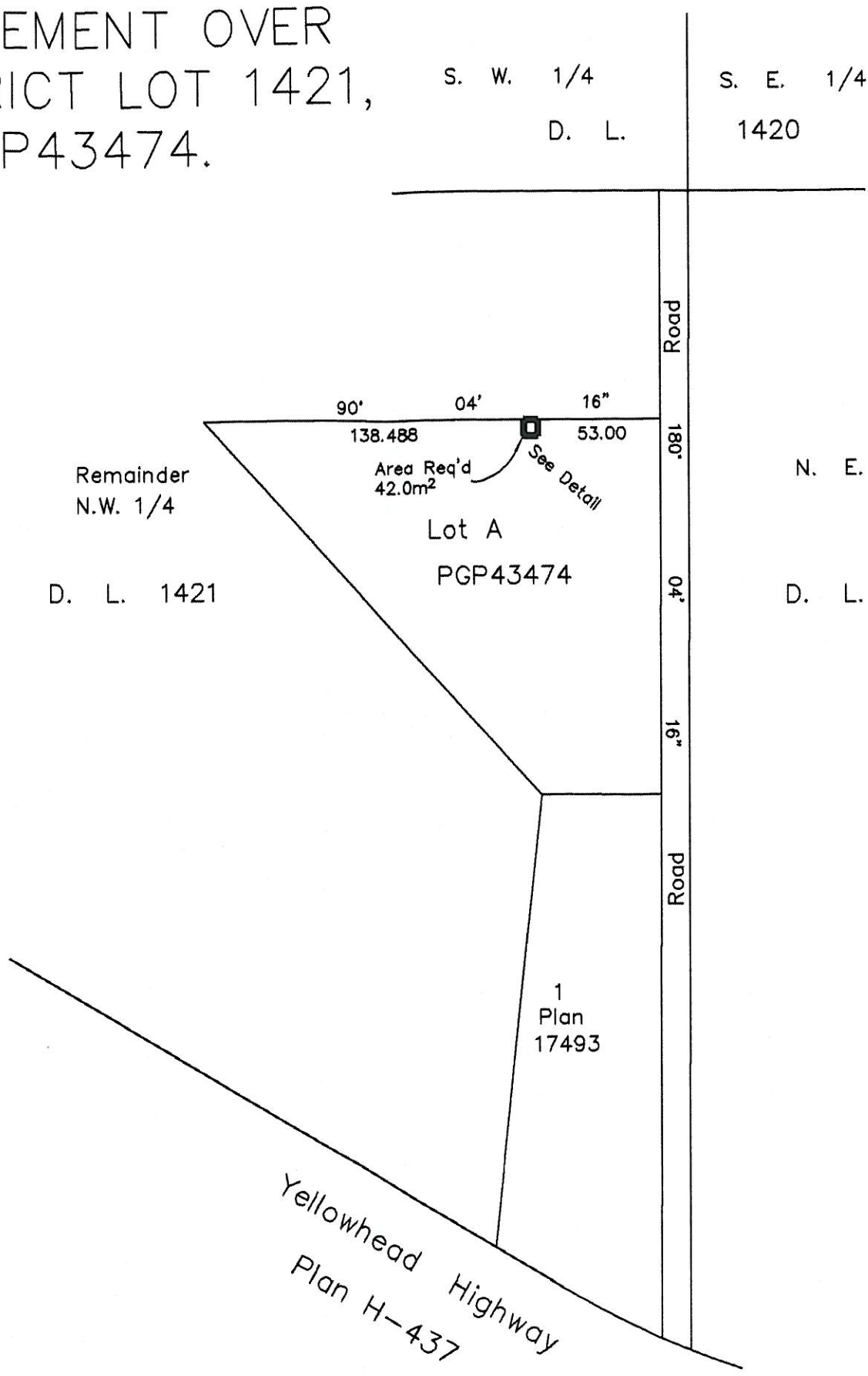


Bearings are astronomic, derived from  
PGP43474



Certified Correct, according to Land Title  
Office Records.  
This 22nd day of August, 2008.  
The plan was completed and checked, and  
the checklist filed under #85846, on the  
25th day of August, 2008.

*Gordon Kilbride*  
Gordon Kilbride, B.C.L.S.



PLAN NO. BCP \_\_\_\_\_ 38992

Deposited in the Land Title Office at New  
Westminster this day of \_\_\_\_\_ 200 .

REGISTRAR  
REF: BB1025479

This plan lies within the Regional District  
of Fraser - Fort George.

 <b>McElhanney</b> McElhanney Associates Land Surveying Ltd. Prince George, B.C. Ph: (250) 561-2229 Fax: 563-1941		
F.B. - -	D.L. - 1421	File No. - 5462-213-E2