

EXPLANATORY PLAN OF EASEMENT OVER
PART OF LOT 1, DISTRICT LOT 1433,
CARIBOO DISTRICT, PLAN 9547, EXCEPT PLAN 16331.

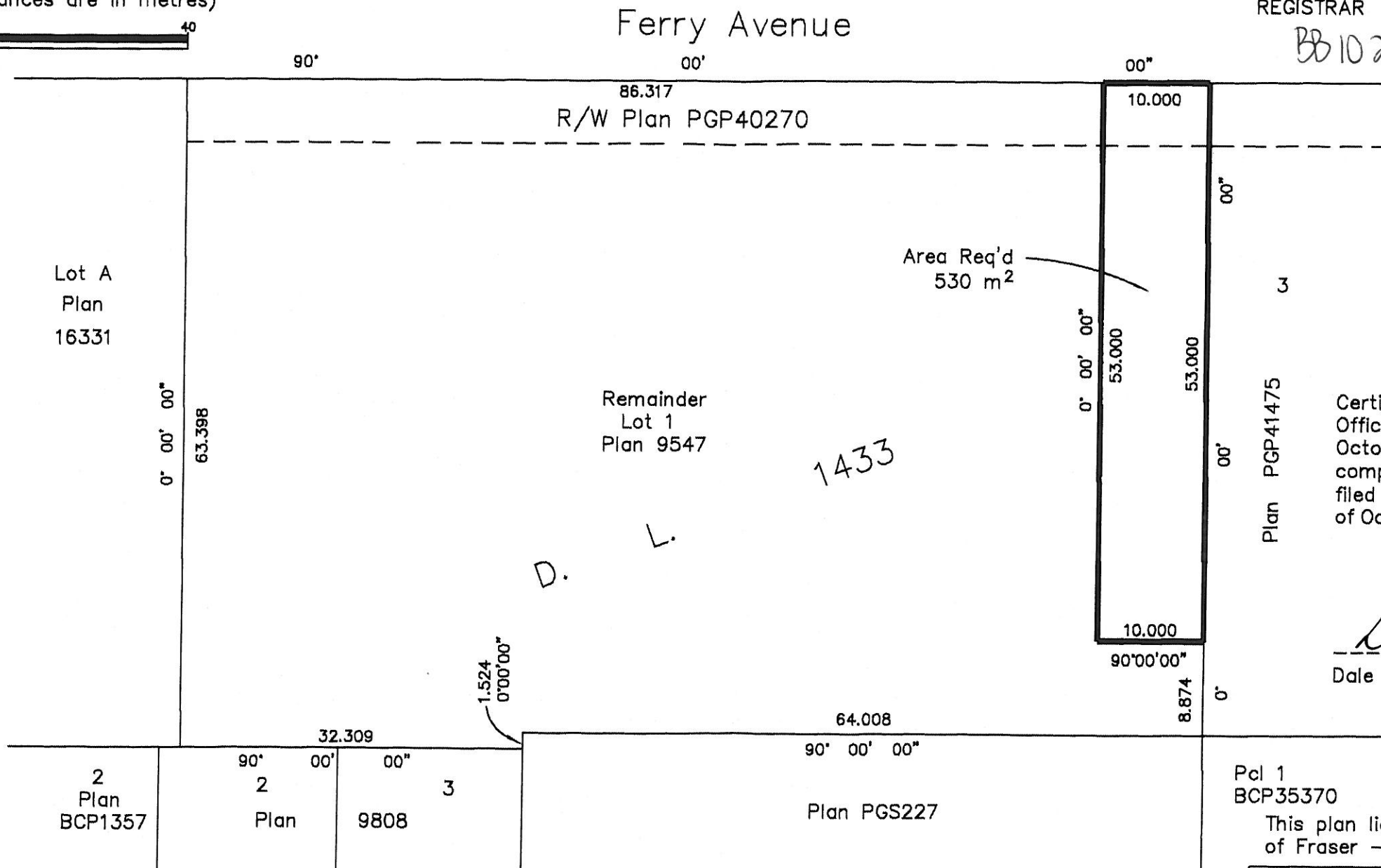
Pursuant to Section 99(1)(e) of the Land Title Act.

BCGS 93G.097

Scale: 1 : 500 (Distances are in metres)



Bearings are astronomic and are derived from Plan 9547.



PLAN NO. BCP 38941

Deposited in the Land Title Office at New Westminster this day of 200 .

REGISTRAR

BB1024253

Certified Correct, according to Land Title Office Records. This 5th day of October, 2008. The plan was completed and checked, and the checklist filed under #87881, on the 5th day of October, 2008.

Dale Keown
Dale Keown, B.C.L.S.

Pcl 1
BCP35370

This plan lies within the Regional District of Fraser - Fort George.

McElhanney
McElhanney Associates
Land Surveying Ltd.

Prince George, B.C.
Ph: (250) 561-2229 Fax: 563-1941

F.B.- - D.L.- 1433 File No. - 5672-78