

REFERENCE PLAN OF STATUTORY RIGHT OF WAY OVER PART OF PARCEL D (PLAN BCP10773) OF PART PARCEL 1, DISTRICT LOT 745, CARIBOO DISTRICT, PLAN 34384 AS SHOWN ON PLAN PGP35183.

PLAN NO. BCP 38935

Deposited in the Land Title Office at New Westminster this 10 day of November 2008.

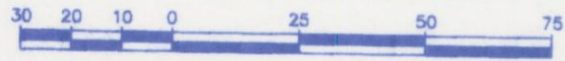
REGISTRAR

ref: B6728562

Pursuant to Section 113 of the Land Title Act.

B.C.G.S. 93G.087

Scale: 1 : 1500 (Distances are in metres)

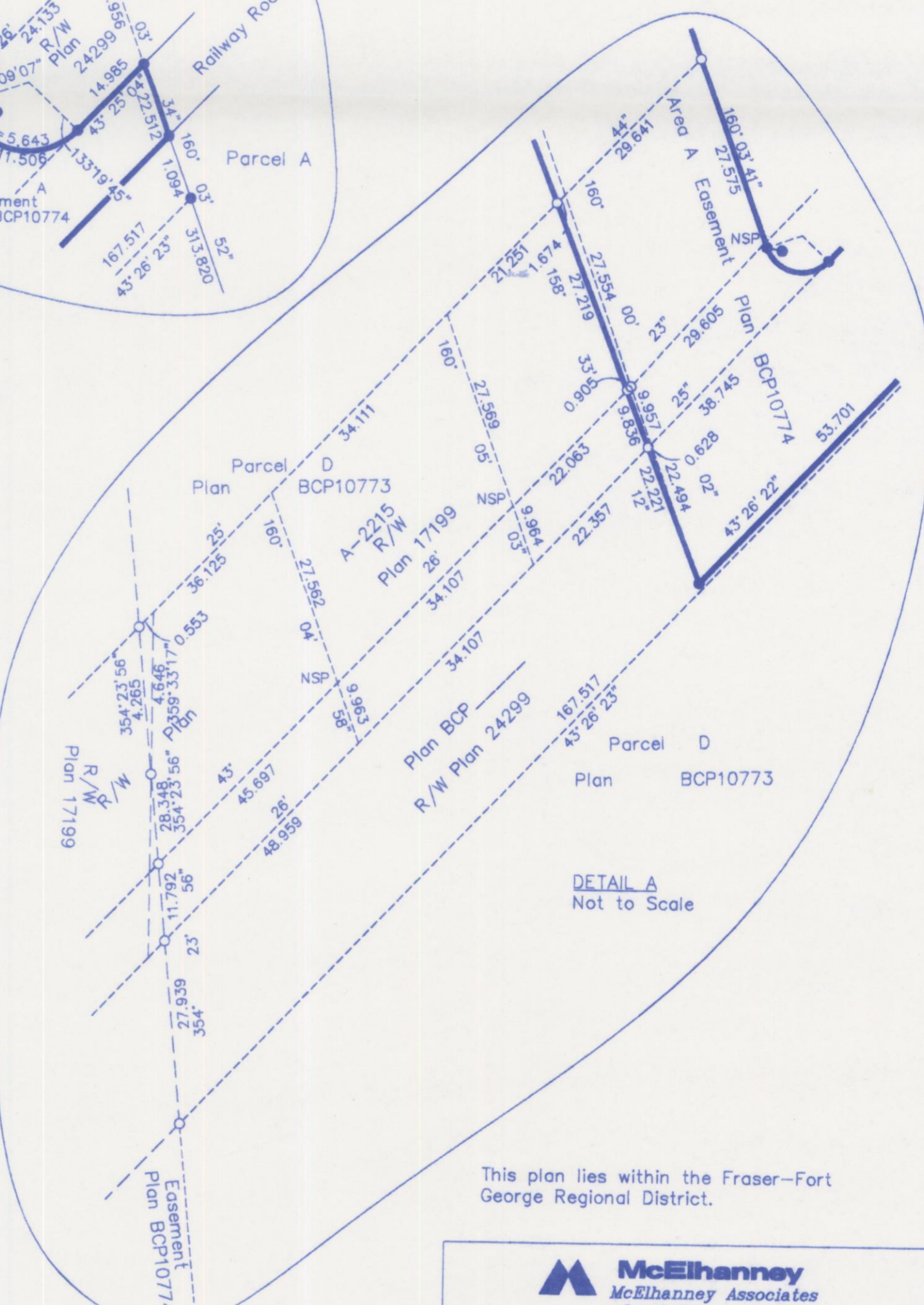
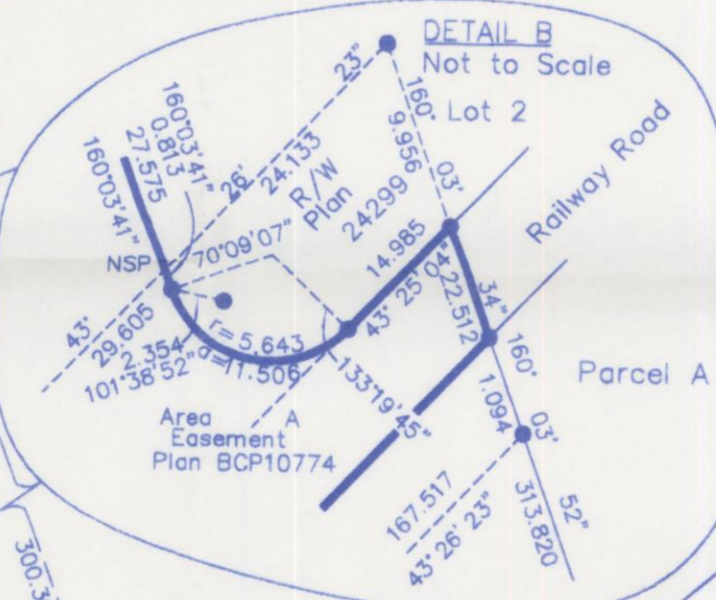
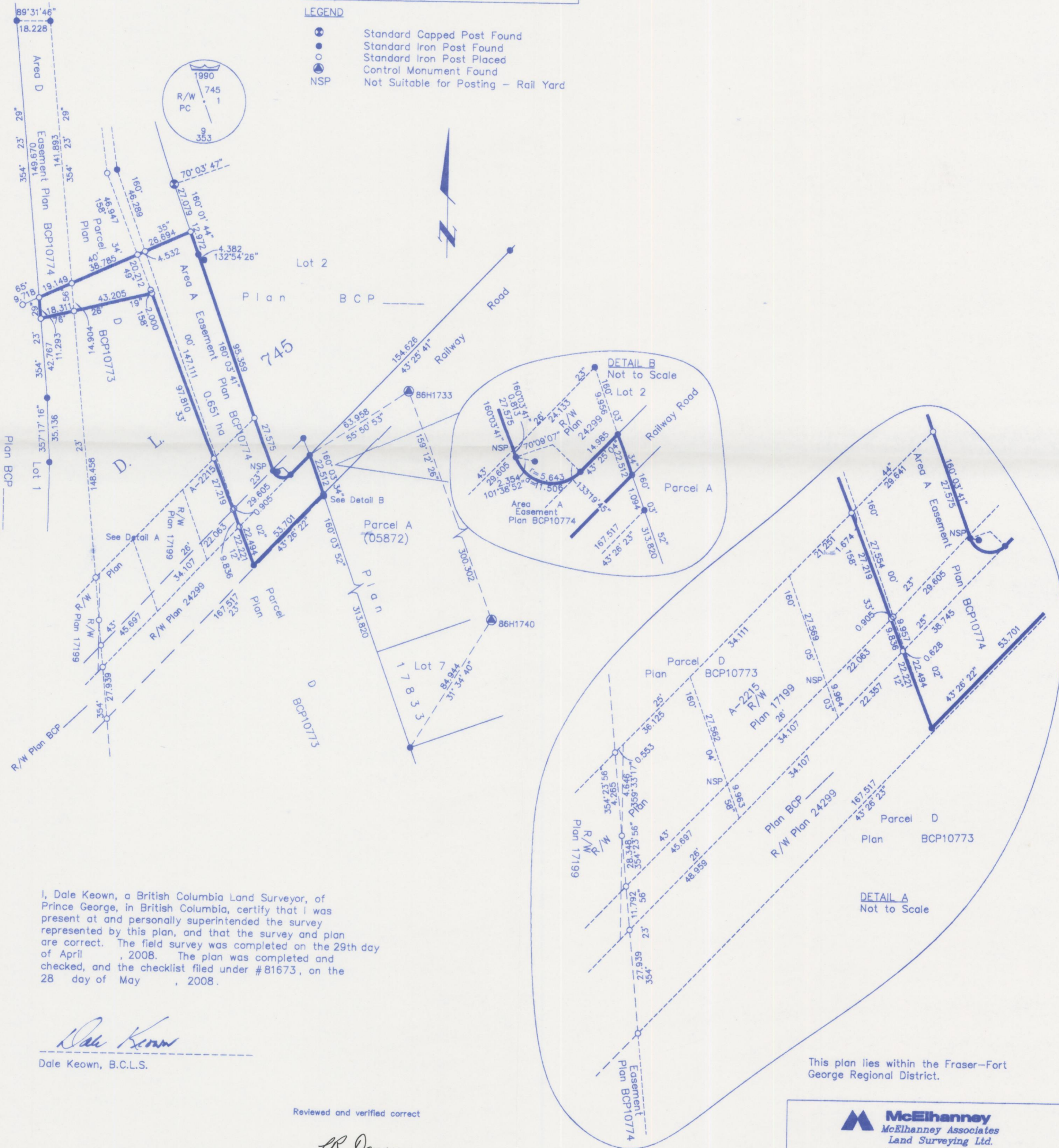


Grid bearings are derived from observations between control monuments 86H1740 and 86H1733, integrated survey area number 39, City of Prince George, B.C. NAD83(CSRS)

Note: This plan shows ground level measured distances. Prior to computation of U.T.M. co-ordinates multiply by the combined factor 0.9995128

LEGEND

- Standard Capped Post Found
- Standard Iron Post Found
- Standard Iron Post Placed
- Control Monument Found
- NSP Not Suitable for Posting - Rail Yard



I, Dale Keown, a British Columbia Land Surveyor, of Prince George, in British Columbia, certify that I was present at and personally superintended the survey represented by this plan, and that the survey and plan are correct. The field survey was completed on the 29th day of April, 2008. The plan was completed and checked, and the checklist filed under #81673, on the 28 day of May, 2008.

Dale Keown
Dale Keown, B.C.L.S.

Reviewed and verified correct

CR Dawson
Supervisor Survey and Crossing
BCR Properties Ltd. #88473
#921E

This plan lies within the Fraser-Fort George Regional District.

McElhanney
McElhanney Associates
Land Surveying Ltd.
Prince George, B.C.
Ph: (250) 562-1196 Fax: 563-1941

F.B.- RA	D.L.- 485	File No. - 5345-RW3
----------	-----------	---------------------