

REFERENCE PLAN OF STATUTORY RIGHT OF WAY
OVER A PORTION OF LOT 1, DISTRICT LOT 2508,
CARIBOO DISTRICT, PLAN BCP34105.

Pursuant to Section 113 of the Land Title Act.
B.C.G.S. 93G.096

Scale: 1 : 750 (Distances are in metres)



Bearings are astronomic, derived from
BCP34105

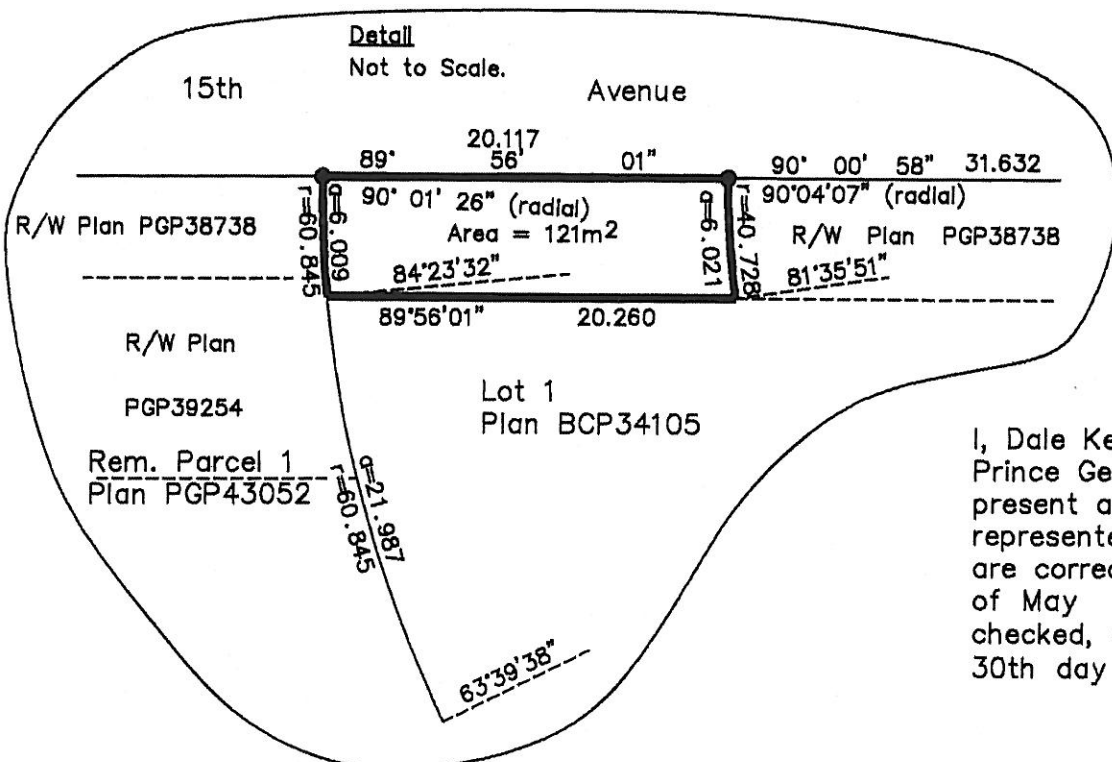
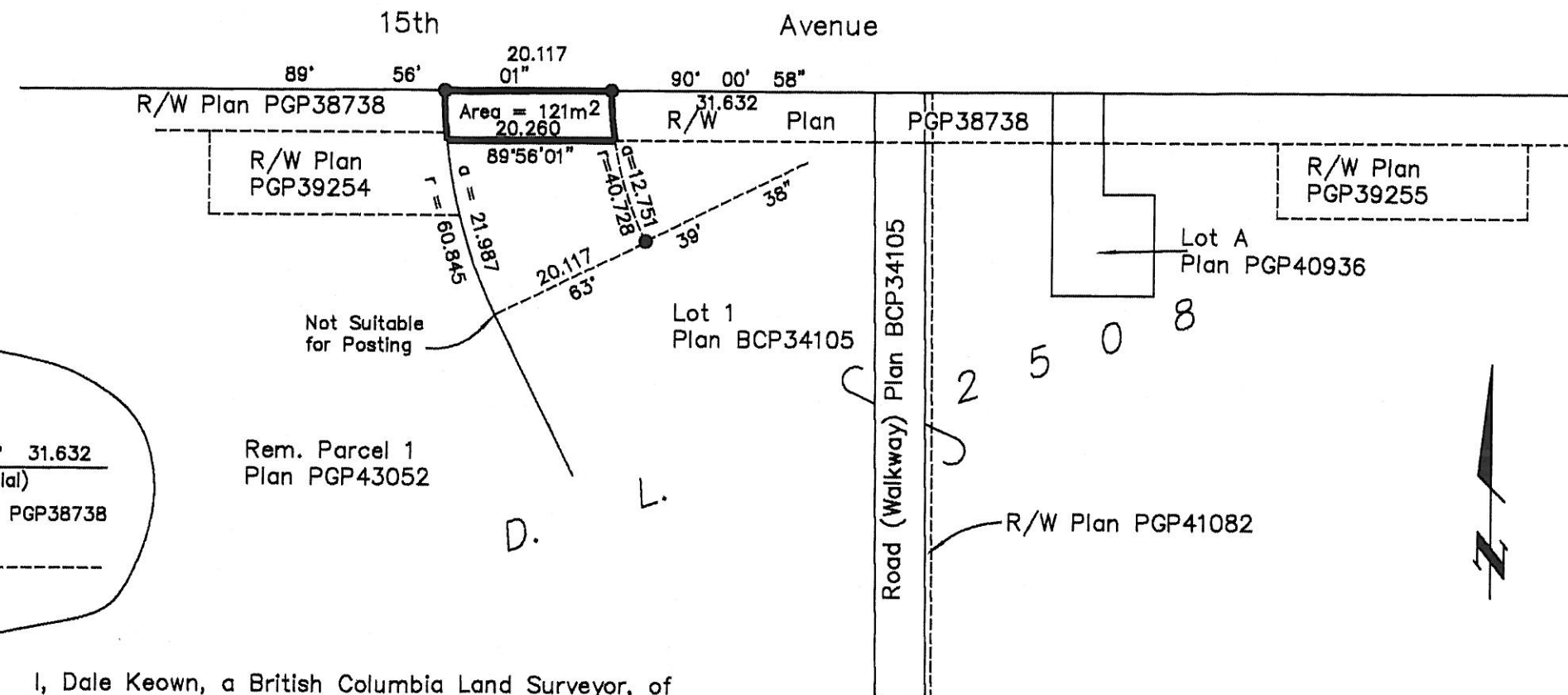
LEGEND

● Standard Iron Post Found

PLAN NO. BCP 38868

Deposited in the Land Title Office at New
Westminster this 4 day of November 2008

Car Macdonald per: dmc
REGISTRAR



I, Dale Keown, a British Columbia Land Surveyor, of Prince George, in British Columbia, certify that I was present at and personally supervised the survey represented by this plan, and that the survey and plan are correct. The field survey was completed on the 30th day of May, 2008. The plan was completed and checked, and the checklist filed under #81861, on the 30th day of May, 2008.

Dale Keown

Dale Keown, B.C.L.S.

This plan lies within the Fraser-Fort George Regional District.

McElhanney
McElhanney Associates
Land Surveying Ltd.
Prince George, B.C.
Ph: (250) 561-2229 Fax: 563-1941

F.B.- - D.L.- 2508 File No. - 5575-RW