

38786

PLAN NO. BCP _____

Deposited in the Land Title Office at New Westminster this 28 day of OCTOBER 2008

REGISTRAR

BB 1026195

REFERENCE PLAN TO ACCOMPANY A COVENANT OVER PART OF PARCEL 1, DISTRICT LOT 2003, CARIBOO DISTRICT, PLAN BCP37635.

Pursuant to Section 99(1)(e) of the Land Title Act B.C.G.S. 93G.087

Scale: 1 : 1250 (Distances are in metres)

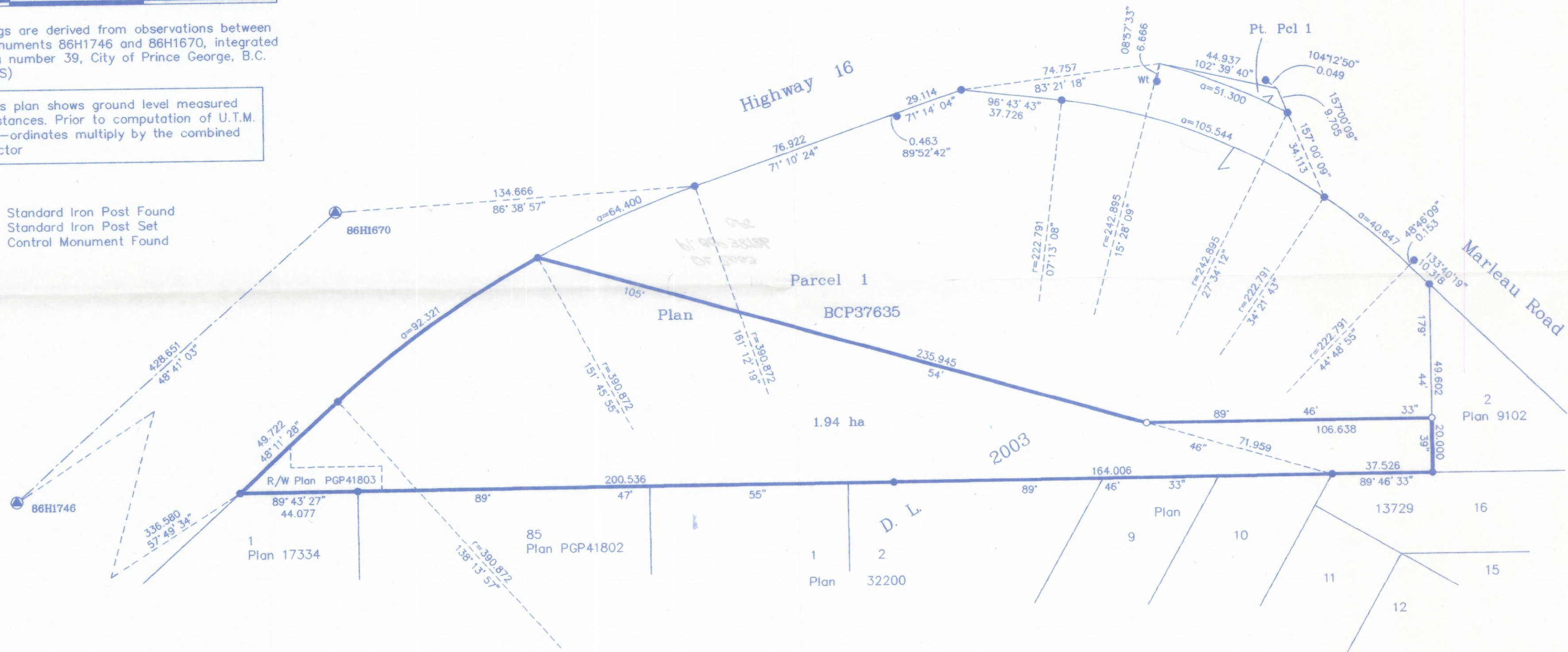


Grid bearings are derived from observations between control monuments 86H1746 and 86H1670, integrated survey area number 39, City of Prince George, B.C. NAD83(CSRS)

Note: This plan shows ground level measured distances. Prior to computation of U.T.M. co-ordinates multiply by the combined factor

LEGEND

- Standard Iron Post Found
- Standard Iron Post Set
- ⊙ Control Monument Found



I, Gordon Kilbride, a British Columbia Land Surveyor, of Prince George, in British Columbia, certify that I was present at and personally superintended the survey represented by this plan, and that the survey and plan are correct. The field survey was completed on the 6 day of February, 2008. The plan was completed and checked, and the checklist filed under #84419, on the 24 day of July, 2008.

Gordon Kilbride
Gordon Kilbride, B.C.L.S.

This plan lies within the Regional District of Fraser-Fort George.

McElhanney
McElhanney Associates
Land Surveying Ltd.

Prince George, B.C.
Ph: (250) 561-2229 Fax: 563-1941

F.B.- RA D.L.- 2003 File No. -5617C2

