

PLAN NO. BCP 37919

Deposited in the Land Title Office at New Westminster this 4 day of SEPTEMBER 2008.

DEPUTY REGISTRAR
Don McDonald
 BB 706782

SUBDIVISION PLAN OF
 LOTS 28 AND 29, DISTRICT
 LOT 745, CARIBOO DISTRICT,
 PLAN 17833.

B.C.G.S. 93G.087

Scale: 1 : 1250 (Distances are in metres)



Grid bearings are derived from observations between control monuments 86H1733 and 86H1740, integrated survey area number 39, City of Prince George, B.C. NAD83(CSRS)

Note: This plan shows ground level measured distances. Prior to computation of U.T.M. co-ordinates multiply by the combined factor 0.9995130

LEGEND

- Standard Iron Post Found
- Standard Iron Post Placed
- ⊙ Control Monument Found

Lot 1
 Plan PGP38955

Great Street

Lot 30

17833

Lot 31

17833

Lot 18

Plan BCP23875

Lot 20

Plan 17833

Lot 29

Lot A

Lot 27

Lot 28

Lot B

0.490 ha

Lot 24

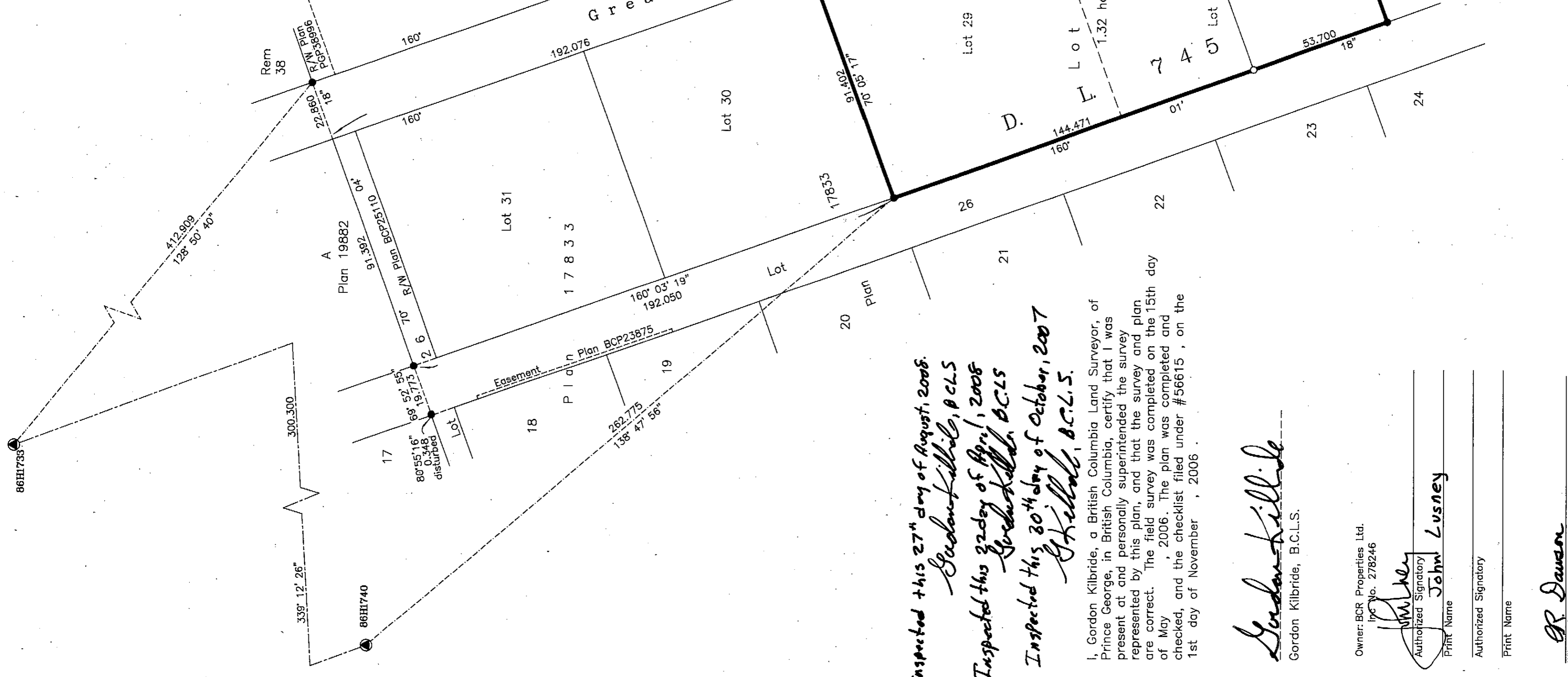
Lot 23

Lot 22

Rem. Lot A

Plan 28055

Rem. 41



*Inspected this 27th day of August, 2008.
 Gordon Kilbride, B.C.L.S.*

*Inspected this 22nd day of April, 2008
 Gordon Kilbride, B.C.L.S.*

*Inspected this 30th day of October, 2007
 Gordon Kilbride, B.C.L.S.*

I, Gordon Kilbride, a British Columbia Land Surveyor, of Prince George, in British Columbia, certify that I was present at and personally superintended the survey represented by this plan, and that the survey and plan are correct. The field survey was completed on the 15th day of May, 2006. The plan was completed and checked, and the checklist filed under #56615, on the 1st day of November, 2006.

Gordon Kilbride
 Gordon Kilbride, B.C.L.S.

Owner: BCR Properties Ltd.
 IPC No. 278246

John Lusney
 Authorized Signatory
 Print Name: John Lusney

Authorized Signatory
 Print Name

Witness to both
Chris Dawson
 Print Name: Chris Dawson
 #600-221 West Esplanade
 Address: North Vancouver, B.C. V7M3J3
 Postal Code
 Supervisor Surveys and Crossings
 Occupation #81A

Approved under the Land Title Act this 28 day of August, 2008.
[Signature]
 Approving Officer
 City of Prince George

This plan lies within the Fraser-Fort George Regional District.

McElhanney
 McElhanney Associates
 Land Surveying Ltd.
 Prince George, B.C.
 Ph: (250) 562-1196 Fax: 563-1941

F.B.- XM 55 D.L.- 745 File No. - 5287-0

ORIGINAL