

REFERENCE PLAN OF CONSOLIDATION  
 OF LOT 2, DISTRICT LOT 2003, PLAN 8579,  
 EXCEPT PLAN 22760 AND OF LOT 2,  
 DISTRICT LOT 2003, PLAN 8960,  
 EXCEPT PLANS PGP36679, PGP38587  
 AND PGP47842, BOTH OF  
 CARIBOO DISTRICT.

Pursuant to Section 100(1)(b) of  
 the Land Title Act  
 B.C.G.S. 93G.087

PLAN NO. BCP 37635

Deposited in the Land Title Office at New  
 Westminster this 13 day of Aug 2008.

REGISTRAR

ref: BR 698198

Scale: 1 : 1250 (Distances are in metres)

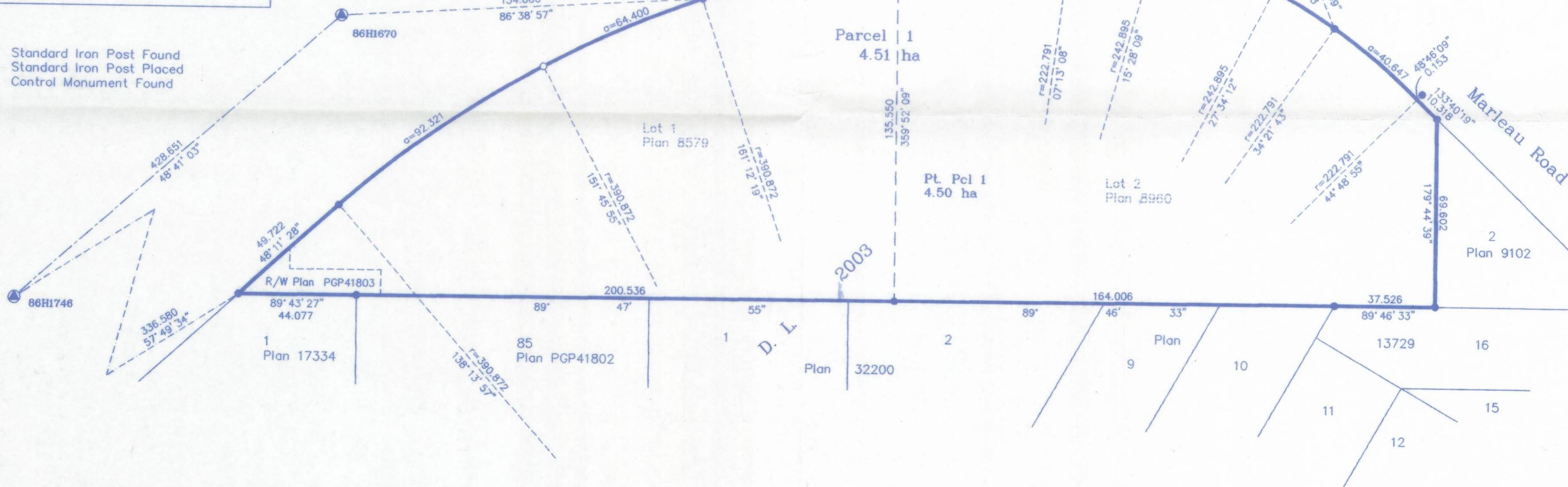


Grid bearings are derived from observations between  
 control monuments 86H1746 and 86H1670, integrated  
 survey area number 39, City of Prince George, B.C.  
 NAD83(CSRS)

Note: This plan shows ground level measured  
 distances. Prior to computation of U.T.M.  
 co-ordinates multiply by the combined  
 factor

LEGEND

- Standard Iron Post Found
- Standard Iron Post Placed
- ⊙ Control Monument Found



Owner: The Roman Catholic Espiscopal Corporation  
 of Prince Rupert

*Richard Beaudette OM*  
 Authorized Signatory  
 Richard Beaudette, OM  
 Print Name

Authorized Signatory  
 Print Name

*John Phillips*  
 Witness to both  
 JOHN PHILLIPS  
 Print Name  
 Box 7000  
 Address  
 PRINCE GEORGE BC V2N 3Z2  
 Postal Code  
 BUSINESS MANAGER  
 Occupation

I, Gordon Kilbride, a British Columbia Land Surveyor, of  
 Prince George, in British Columbia, certify that I was  
 present at and personally superintended the survey  
 represented by this plan, and that the survey and plan  
 are correct. The field survey was completed on the 6 day  
 of February, 2008. The plan was completed and  
 checked, and the checklist filed under #77592, on the  
 25 day of February, 2008.

*Gordon Kilbride*  
 Gordon Kilbride, B.C.L.S.

This plan lies within the Fraser-Fort  
 George Regional District.

**McElhanney**  
 McElhanney Associates  
 Land Surveying Ltd.  
 Prince George, B.C.  
 Ph: (250) 561-2229 Fax: 563-1941

F.B.- RA	D.L.- 2003	File No. - 5617
----------	------------	-----------------