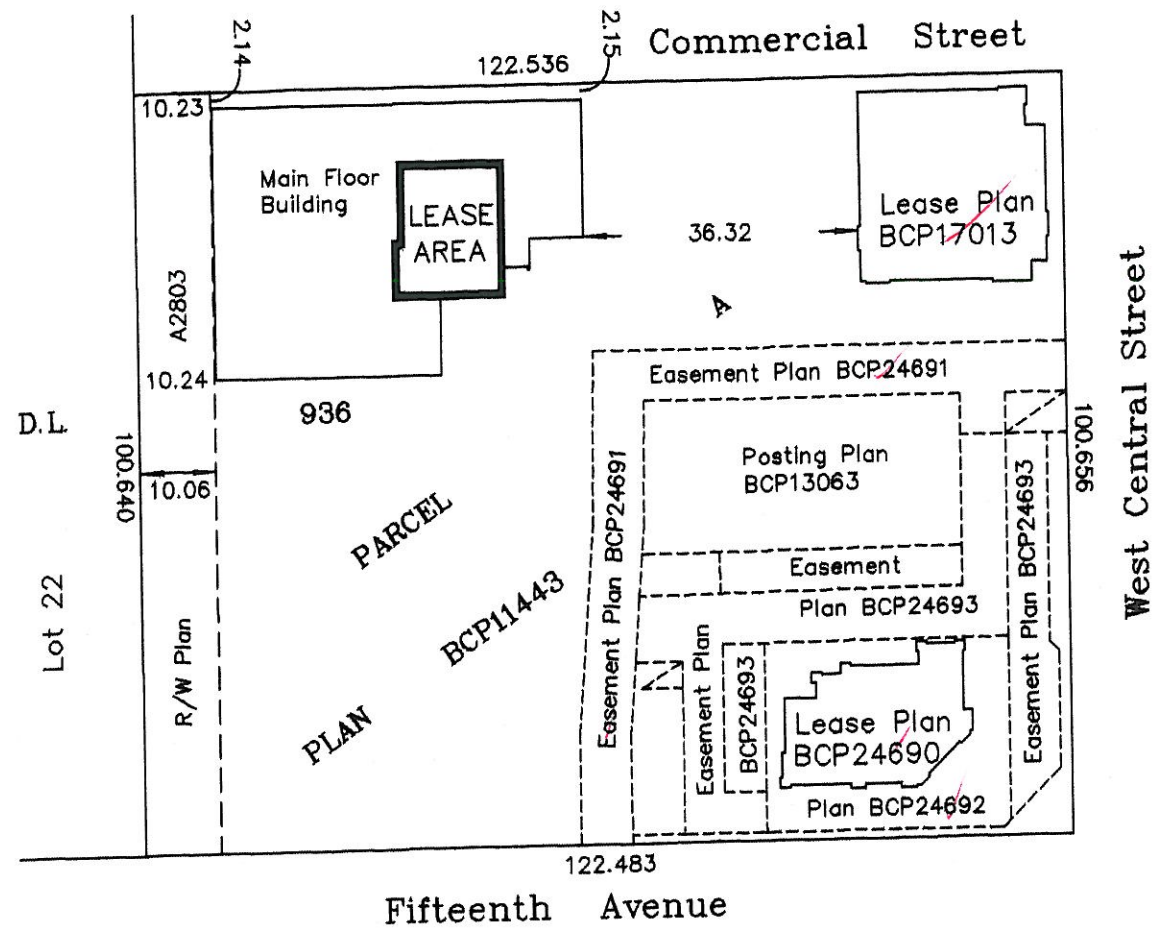


PLAN NO. BCP 37113

Deposited in the Land Title Office at New Westminster this 7 day of July 2008.

D. McDonald
REGISTRAR
BB97751

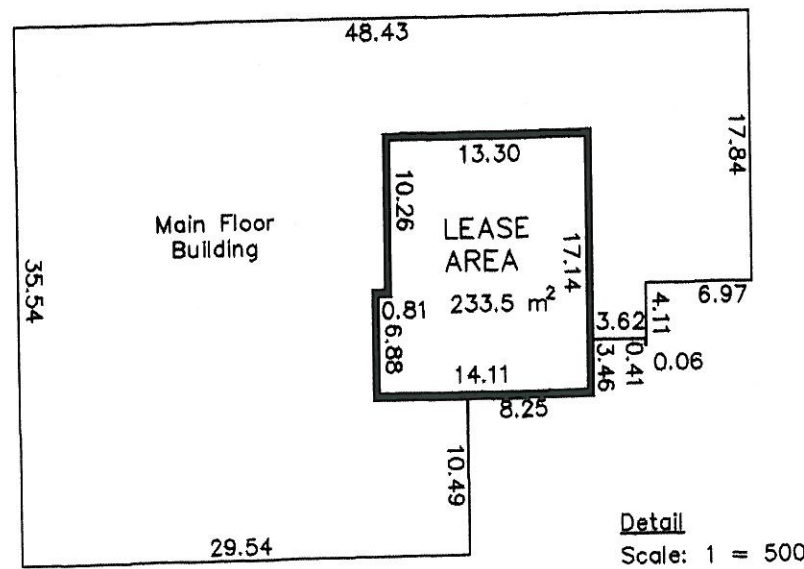
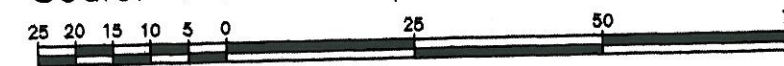


EXPLANATORY PLAN OF LEASE OF PART OF THE MAIN FLOOR OF A TWO STOREY BUILDING SITUATED ON PART OF PARCEL A, DISTRICT LOT 936, CARIBOO DISTRICT, PLAN BCP11443.

Pursuant to Section 99(1)(k) of the Land Title Act.

B.C.G.S. 93G.097

Scale: 1 : 1000 (Distances are in metres)



Certified Correct, according to Land Title Office Records.

This 19th day of March 2008. The plan was completed and checked, and the checklist filed under #80565, on the 5th day of May 2008.

This plan lies within the Fraser-Fort George Regional District.

McElhanney
McElhanney Associates
Land Surveying Ltd.

Prince George, B.C.

Ph: (250) 561-2229 Fax: 563-1941

Dale Keown
Dale Keown, B.C.L.S.

F.B.- RA | D.L.- 936 | File No. - 5462-234