

REFERENCE PLAN OF STATUTORY RIGHT OF WAY  
OVER PART OF LOT 1, DISTRICT LOT 4048,  
CARIBOO DISTRICT, PLAN 29328, EXCEPT PLAN BCP 37056.

PLAN NO. BCP 37057

Deposited in the Land Title Office at New  
Westminster this 3 day of JULY 2008.

Pursuant to Section 113  
of the Land Title Act.

BCGS 93G.096

BB684122  
REGISTRAR

Scale: 1 : 750 (Distances are in metres)

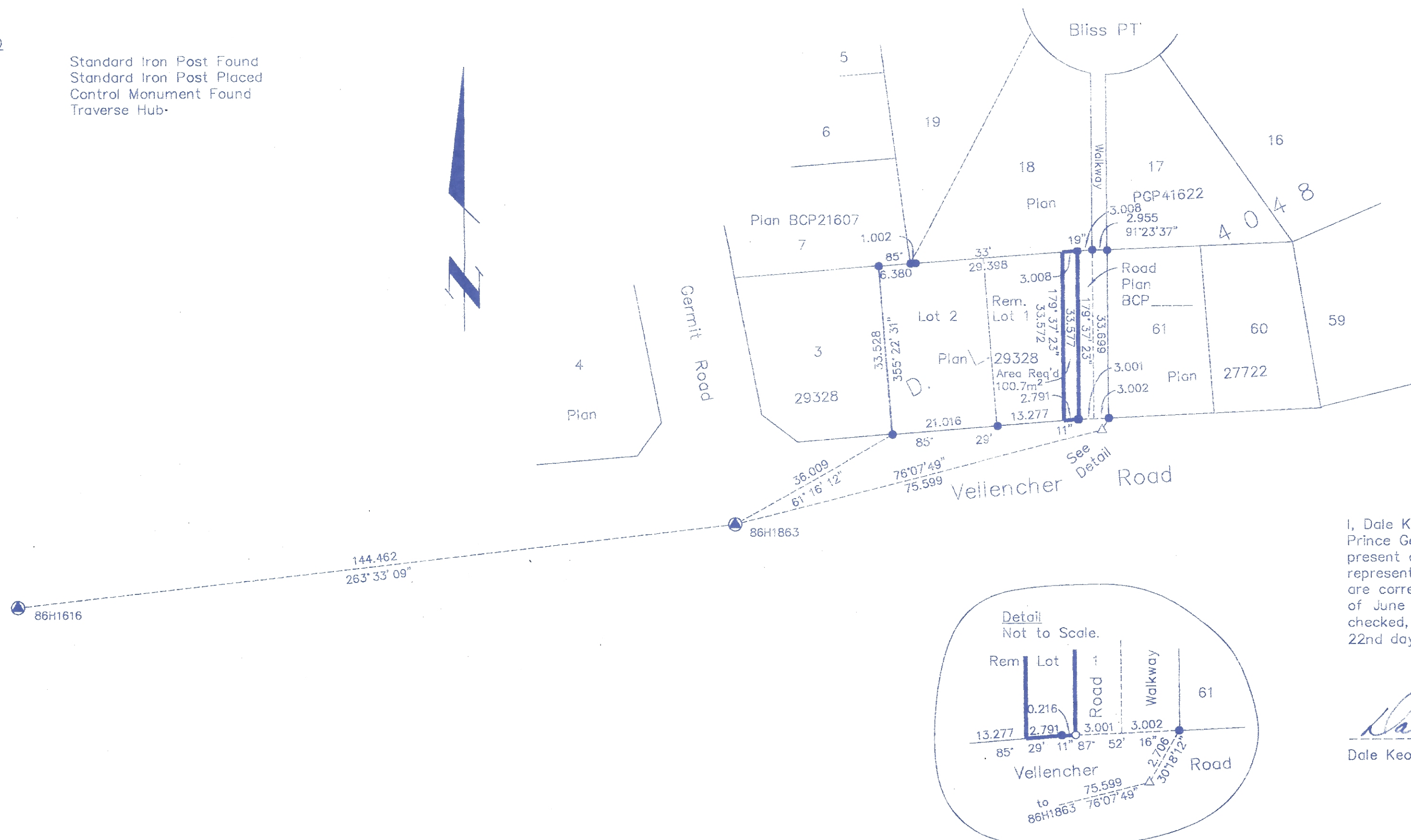


Grid bearings are derived from observations between  
control monuments 86H1616 and 86H1863, integrated  
survey area number 39, City of Prince George, B.C.  
NAD83(CSRS)

Note: This plan shows horizontal ground-level  
distances except where otherwise noted.  
To compute grid distances, multiply ground-level  
distances by combined factor 0.9994794

LEGEND

- Standard Iron Post Found
- Standard Iron Post Placed
- ⊙ Control Monument Found
- △ Traverse Hub



I, Dale Keown, a British Columbia Land Surveyor, of  
Prince George, in British Columbia, certify that I was  
present at and personally supervised the survey  
represented by this plan, and that the survey and plan  
are correct. The field survey was completed on the 17th day  
of June, 2008. The plan was completed and  
checked, and the checklist filed under #82919, on the  
22nd day of June, 2008.

Dale Keown  
Dale Keown, B.C.L.S.

This plan lies within the Regional District  
of Fraser - Fort George.

**McElhanney**  
McElhanney Associates  
Land Surveying Ltd.

Prince George, B.C.

Ph: (250) 561-2229 Fax: 563-1941

F.B.- RA D.L.- 4040 File No. - 5661-RW