


REFERENCE PLAN OF EASEMENTS WITHIN LOTS 1 TO 10, DISTRICT LOT 905, CARIBOO DISTRICT, PLAN BCP 36152

Pursuant to Section 99(1)(e)
of the Land Title Act.
B.C.G.S. 93G.087

Scale: 1 : 750 (Distances are in metres)

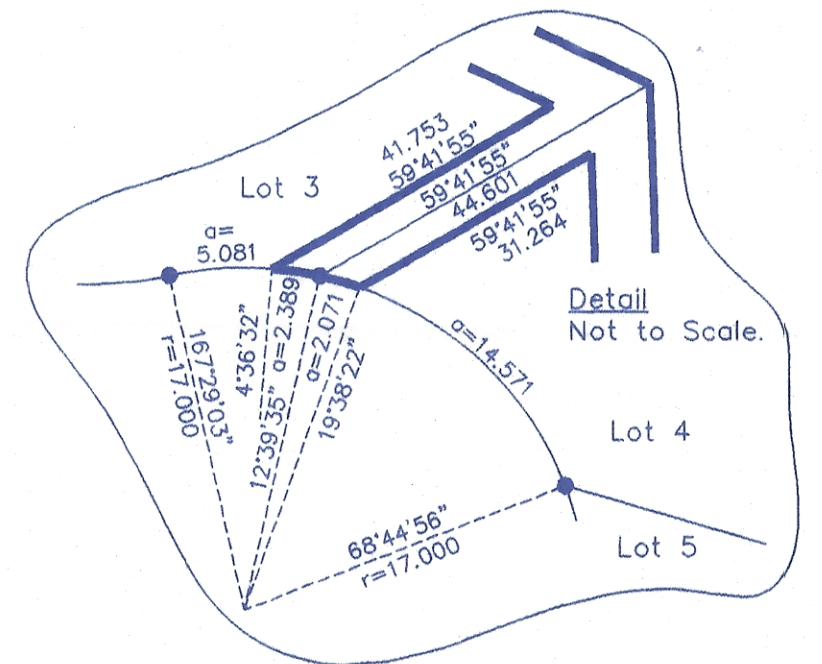
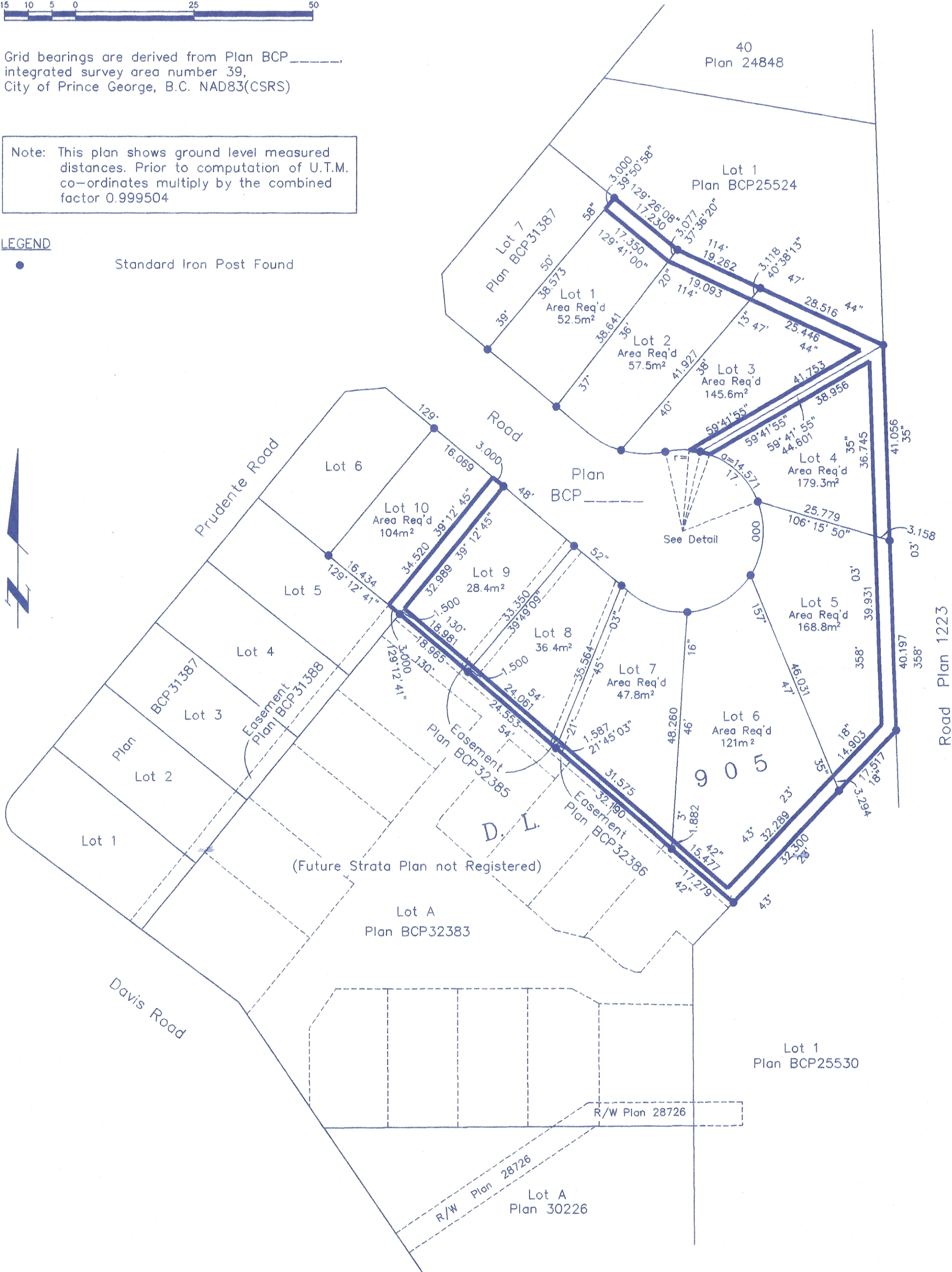


Grid bearings are derived from Plan BCP _____
integrated survey area number 39,
City of Prince George, B.C. NAD83(CSRS)

Note: This plan shows ground level measured
distances. Prior to computation of U.T.M.
co-ordinates multiply by the combined
factor 0.999504

LEGEND

● Standard Iron Post Found



I, Dale Keown, a British Columbia Land Surveyor, of
Prince George, in British Columbia, certify that I was
present at and personally superintended the survey
represented by this plan, and that the survey and plan
are correct. The field survey was completed on the 31st day
of July, 2007. The plan was completed and
checked, and the checklist filed under #71753, on the
12th day of October, 2007.

Dale Keown
Dale Keown, B.C.L.S.

PLAN NO. BCP _____

Deposited in the Land Title Office at New
Westminster this 7 day of May 2008

J. MacFarlane
REGISTRAR
BB661653

BOOK OF REFERENCE	
DESCRIPTION	AREA
Lot 1, Plan BCP _____	52.5m ²
Lot 2, Plan BCP _____	57.5m ²
Lot 3, Plan BCP _____	145.6m ²
Lot 4, Plan BCP _____	179.3m ²
Lot 5, Plan BCP _____	168.8m ²
Lot 6, Plan BCP _____	121m ²
Lot 7, Plan BCP _____	47.8m ²
Lot 8, Plan BCP _____	36.4m ²
Lot 9, Plan BCP _____	28.4m ²
Lot 10 Plan BCP _____	104m ²

This plan lies within the Fraser-Fort
George Regional District.

McElhanney
McElhanney Associates
Land Surveying Ltd.
Prince George, B.C.
Ph: (250) 561-2229 Fax: 563-1941

F.B.- D.L.- 905 File No. - 5389-3E