

# REFERENCE PLAN OF EASEMENT OVER PART OF LOTS A AND B, DISTRICT LOT 1599, CARIBOO DISTRICT, PLAN BCP 35582

B.C.G.S. 93G.086

Scale: 1 : 750 (Distances are in metres)

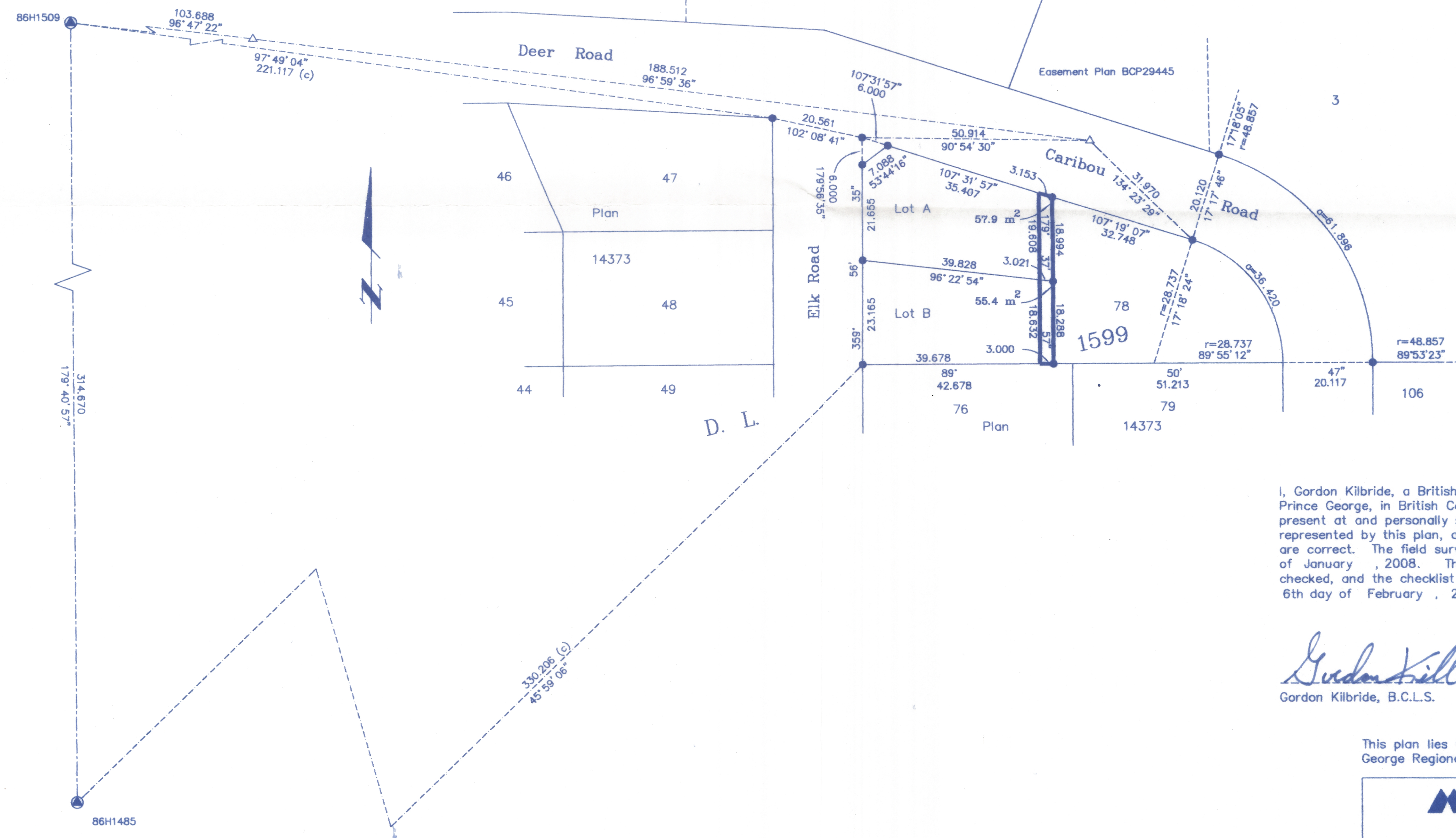


Grid bearings are derived from observations between control monuments 86H1485 and 86H1509, integrated survey area number 39, City of Prince George, B.C. NAD83(CSRS)

Note: This plan shows ground level measured distances. Prior to computation of U.T.M. co-ordinates multiply by the combined factor 0.9994831

## LEGEND

- Standard Iron Post Found
- ⊙ Control Monument Found
- △ Traverse Hub Found



PLAN NO. BCP 35583

Deposited in the Land Title Office at New Westminster this 31 day of March 2008

REGISTRAR

REF. # BB 646393

I, Gordon Kilbride, a British Columbia Land Surveyor, of Prince George, in British Columbia, certify that I was present at and personally superintended the survey represented by this plan, and that the survey and plan are correct. The field survey was completed on the 11 day of January, 2008. The plan was completed and checked, and the checklist filed under #76842, on the 6th day of February, 2008.

*Gordon Kilbride*  
Gordon Kilbride, B.C.L.S.

This plan lies within the Fraser-Fort George Regional District.

**McElhanney**  
McElhanney Associates  
Land Surveying Ltd.

Prince George, B.C.  
Ph: (250) 561-2229 Fax: 563-1941

F.B.- RA D.L.- 1599 File No. - 5604E