

EXPLANATORY PLAN OF  
EASEMENT OVER PART  
OF LOT 1, DISTRICT LOT  
2424, CARIBOO DISTRICT,  
PLAN 21426.

Pursuant to Section 99(1)(e)  
of the Land Title Act.  
B.C.G.S. 93J.006

PLAN NO. BCP 35243

Deposited in the Land Title Office at New  
Westminster this 6<sup>th</sup> day of Mar 2008.

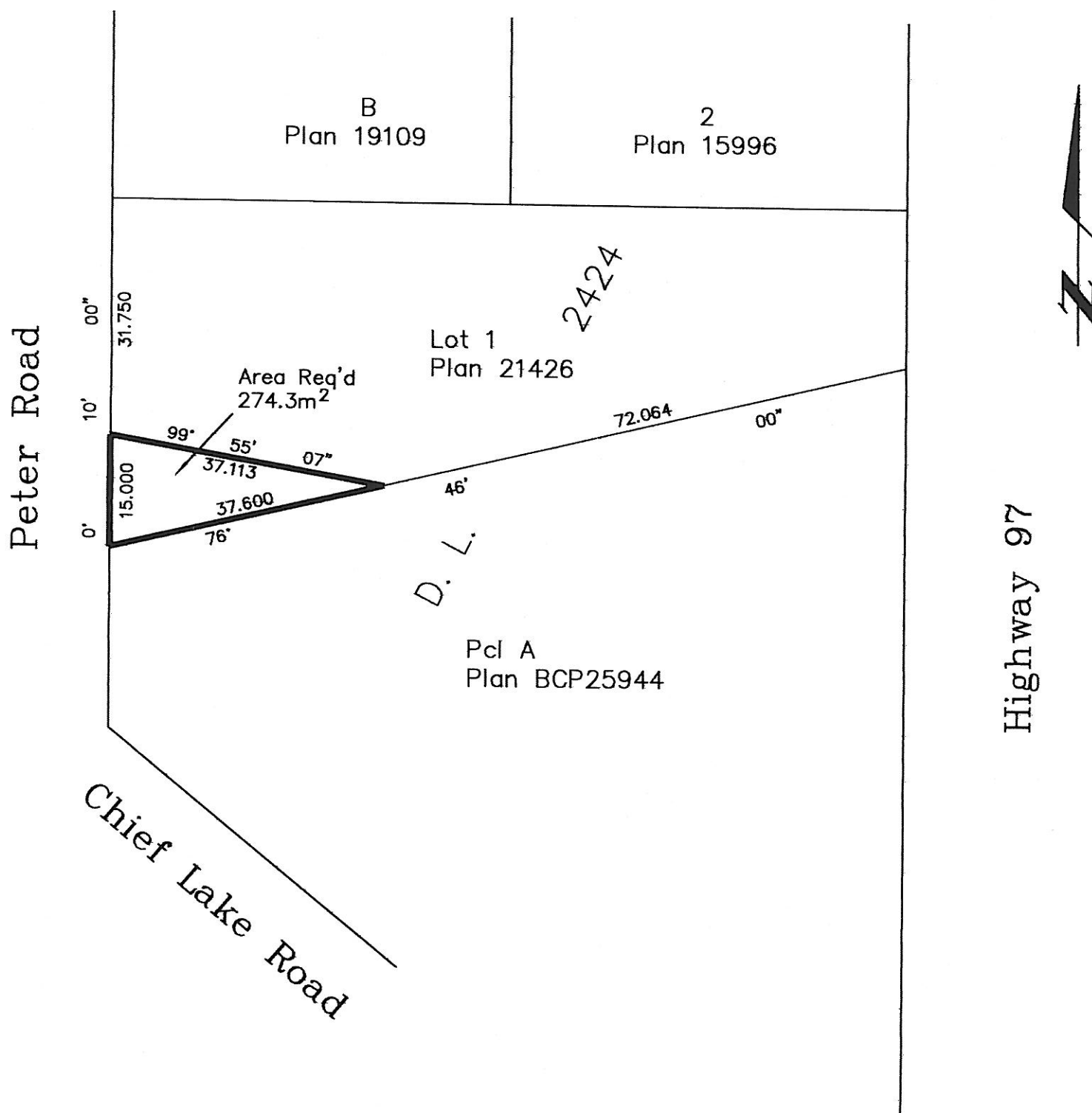
*J. Macdonald*  
REGISTRAR

6839049

Scale: 1 : 750 (Distances are in metres)



Bearings are astronomic, derived from  
21426



Certified Correct, according to Land Title  
Office Records.  
This 6<sup>th</sup> day of February, 2008.  
The plan was completed and checked, and  
the checklist filed under # 76830, on the  
6<sup>th</sup> day of February, 2008.

This plan lies within the Fraser-Fort  
George Regional District.

*Gordon Kilbride*  
Gordon Kilbride, B.C.L.S.

**McElhanney**  
McElhanney Associates  
Land Surveying Ltd.

Prince George, B.C.  
Ph: (250) 561-2229 Fax: 563-1941

F.B.- - D.L.- 2424 File No. - 5462-228