

34672

PLAN NO. BCP _____

Deposited in the Land Title Office at New Westminster this 29 day of January 2008

BB 628971

REGISTRAR

REFERENCE PLAN OF EASEMENT OVER PART OF THE N.W. 1/4 OF DISTRICT LOT 4031, CARIBOO DISTRICT, EXCEPT PLANS 10973 AND 19629. Pursuant to Section 99(1)(e) of the Land Title Act. B.C.G.S. 93J.077

Scale: 1 : 2000 (Distances are in metres)



Bearings are astronomic, derived from Plan PGP45166 = 89°56'18"

LEGEND

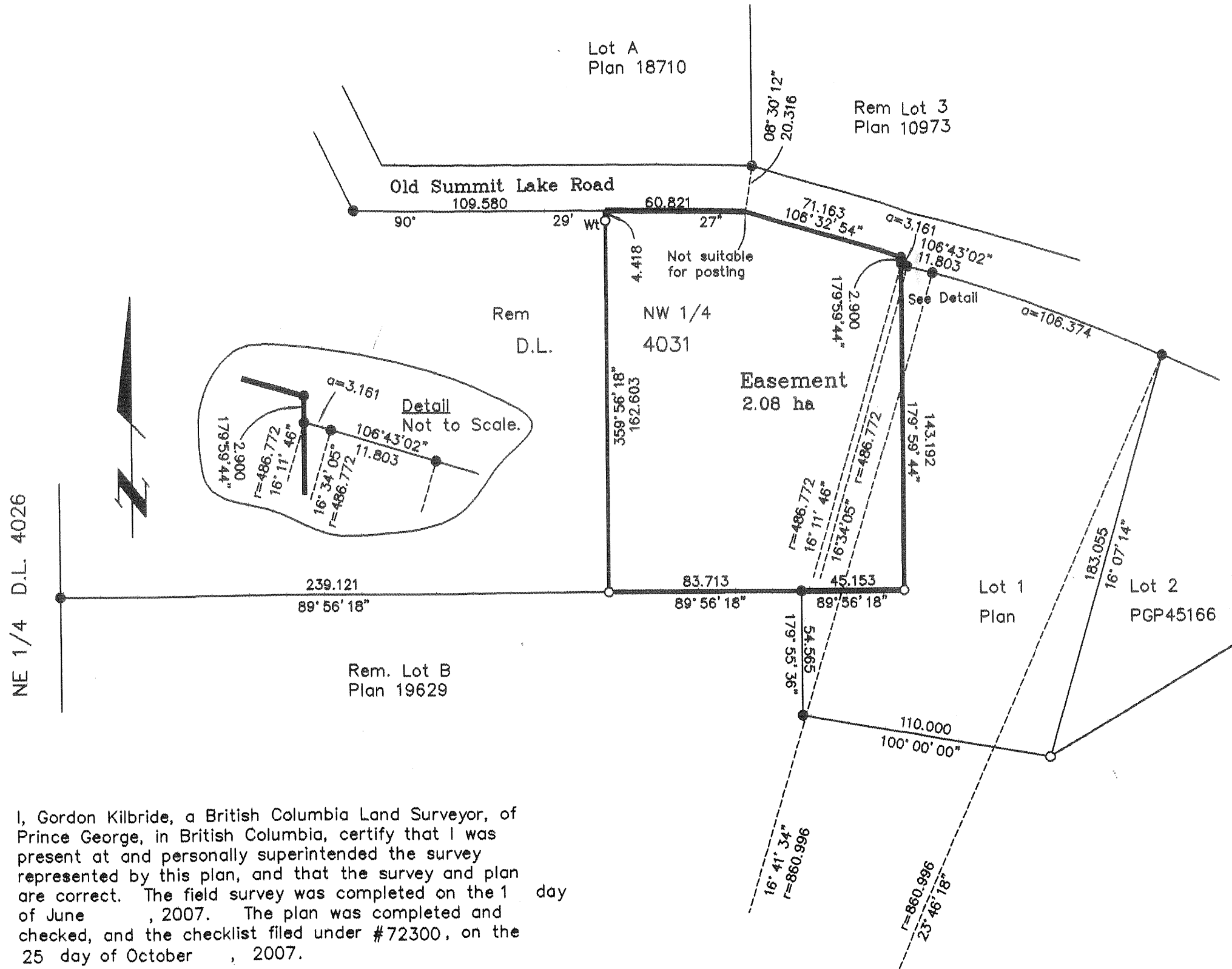
- Standard Iron Post Found
- Standard Iron Post Placed

This plan lies within the Fraser-Fort George Regional District.

McElhanney
McElhanney Associates
Land Surveying Ltd.
Prince George, B.C.

Ph: (250) 561-2229 Fax: 563-1941

F.B.- D.L.- 4031 File No. - 5454E



NE 1/4 D.L. 4026

I, Gordon Kilbride, a British Columbia Land Surveyor, of Prince George, in British Columbia, certify that I was present at and personally superintended the survey represented by this plan, and that the survey and plan are correct. The field survey was completed on the 1 day of June, 2007. The plan was completed and checked, and the checklist filed under #72300, on the 25 day of October, 2007.

Gordon Kilbride
Gordon Kilbride, B.C.L.S.