

EXPLANATORY PLAN OF
EASEMENT OVER PART OF
LOT A, DISTRICT LOT 753,
CARIBOO DISTRICT,
PLAN 27973.

Pursuant to Section 99(e)
of the Land Title Act.

B.C.G.S. 93G.087

Scale: 1 : 750 (Distances are in metres)



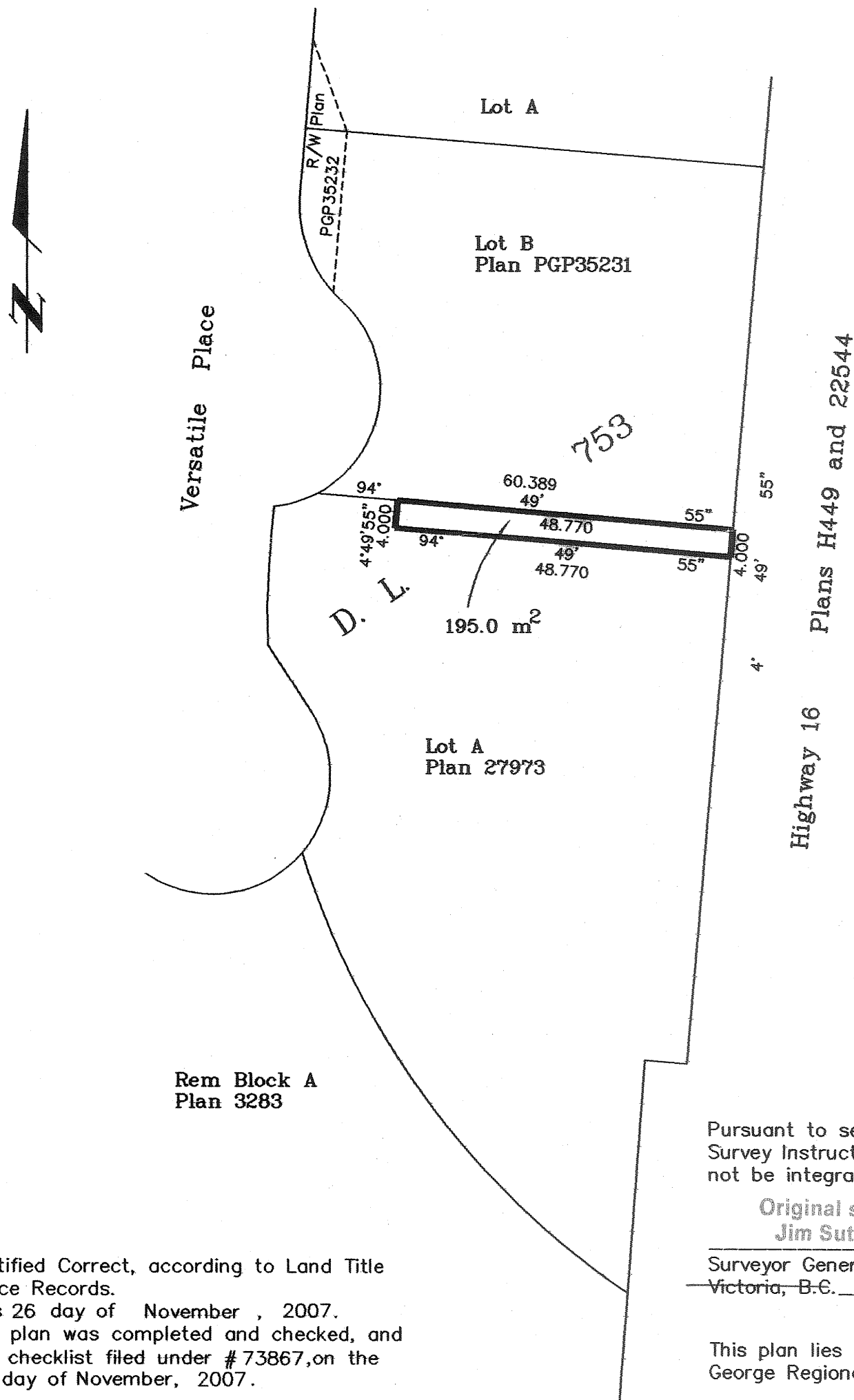
Bearings are astronomic, derived from
Plan 27973

PLAN NO. BCP 34300

Deposited in the Land Title Office at New
Westminster this 9 day of JAN 2008.

REGISTRAR

BB183876



Rem Block A
Plan 3283

Pursuant to section 43 of the General
Survey Instruction Rules, this survey need
not be integrated with survey control.

Original signed by
Jim Sutherland

Surveyor General **DEC 03 2007**
Victoria, B.C.

This plan lies within the Fraser-Fort
George Regional District.

Certified Correct, according to Land Title
Office Records.
This 26 day of November, 2007.
The plan was completed and checked, and
the checklist filed under #73867, on the
26 day of November, 2007.

Gordon Kilbride

Gordon Kilbride, B.C.L.S.

McElhanney
McElhanney Associates
Land Surveying Ltd.

Prince George, B.C.

Ph: (250) 561-2229 Fax: 563-1941

F.B.-	D.L.- 753	File No. - 5462-209
-------	-----------	---------------------

FILE: 10440-07-001