

REFERENCE PLAN OF STATUTORY RIGHT OF WAY  
THROUGH LOT 4, PLAN 34806  
DISTRICT LOT 343  
CARIBOO DISTRICT

PLAN No. BCP -- 33426

DEPOSITED IN THE LAND TITLE OFFICE  
AT NEW WESTMINSTER, B.C., THIS 8<sup>TH</sup> DAY OF NOVEMBER, 2007.

B.C.G.S. 93G.097

PURSUANT TO SECTION 113 OF THE LAND TITLE ACT.



SCALE = 1 : 1000

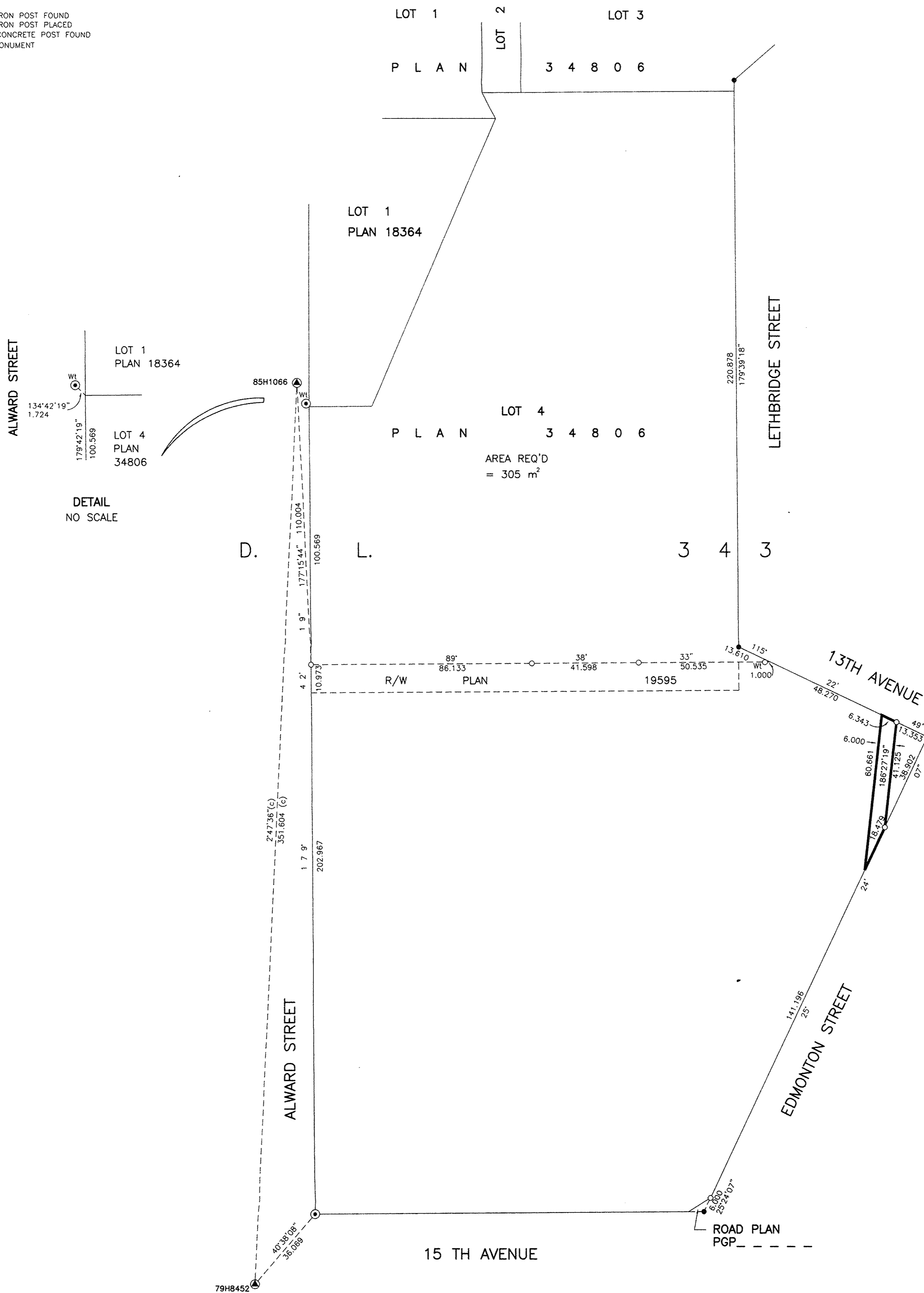
ALL DISTANCES SHOWN ARE IN METRES.

THIS PLAN SHOWS GROUND-LEVEL MEASURED DISTANCES.  
PRIOR TO COMPUTATION OF U.T.M. COORDINATES, MULTIPLY  
BY COMBINED FACTOR 0.99951295.

GRID BEARINGS ARE DERIVED FROM OBSERVATIONS  
BETWEEN CONTROL MONUMENTS 85H1066 AND 79H8452,  
INTEGRATED SURVEY AREA NUMBER 39, PRINCE GEORGE.

REGISTRAR  
88134745

- LEGEND
- STANDARD IRON POST FOUND
  - STANDARD IRON POST PLACED
  - ⊙ STANDARD CONCRETE POST FOUND
  - ⊙ CONTROL MONUMENT



I, RONALD L. JOHNS, A BRITISH COLUMBIA LAND SURVEYOR, PRINCE GEORGE, IN BRITISH COLUMBIA, CERTIFY THAT I WAS PRESENT AT AND PERSONALLY SUPERINTENDED THE SURVEY REPRESENTED BY THIS PLAN AND THAT THE SURVEY AND PLAN ARE CORRECT. THE FIELD SURVEY WAS COMPLETED ON THE 9TH DAY OF SEPTEMBER, 2004. THE PLAN WAS COMPLETED AND CHECKED, AND THE CHECKLIST FILED UNDER # 20709, ON THE 9TH DAY OF SEPTEMBER, 2004.

R.L. Johns  
R.L. JOHNS, B.C.L.S., C.L.S.

THIS PLAN LIES WITHIN THE FRASER-FORT GEORGE REGIONAL DISTRICT.

R. L. JOHNS LAND SURVEYING LTD.  
LEGAL AND ENGINEERING SURVEYS  
240 VICTORIA STREET  
PRINCE GEORGE, B.C. V2L 2J4  
PHONE: (250)562-5759  
FAX: (250)562-5703

2001062A FFS-19