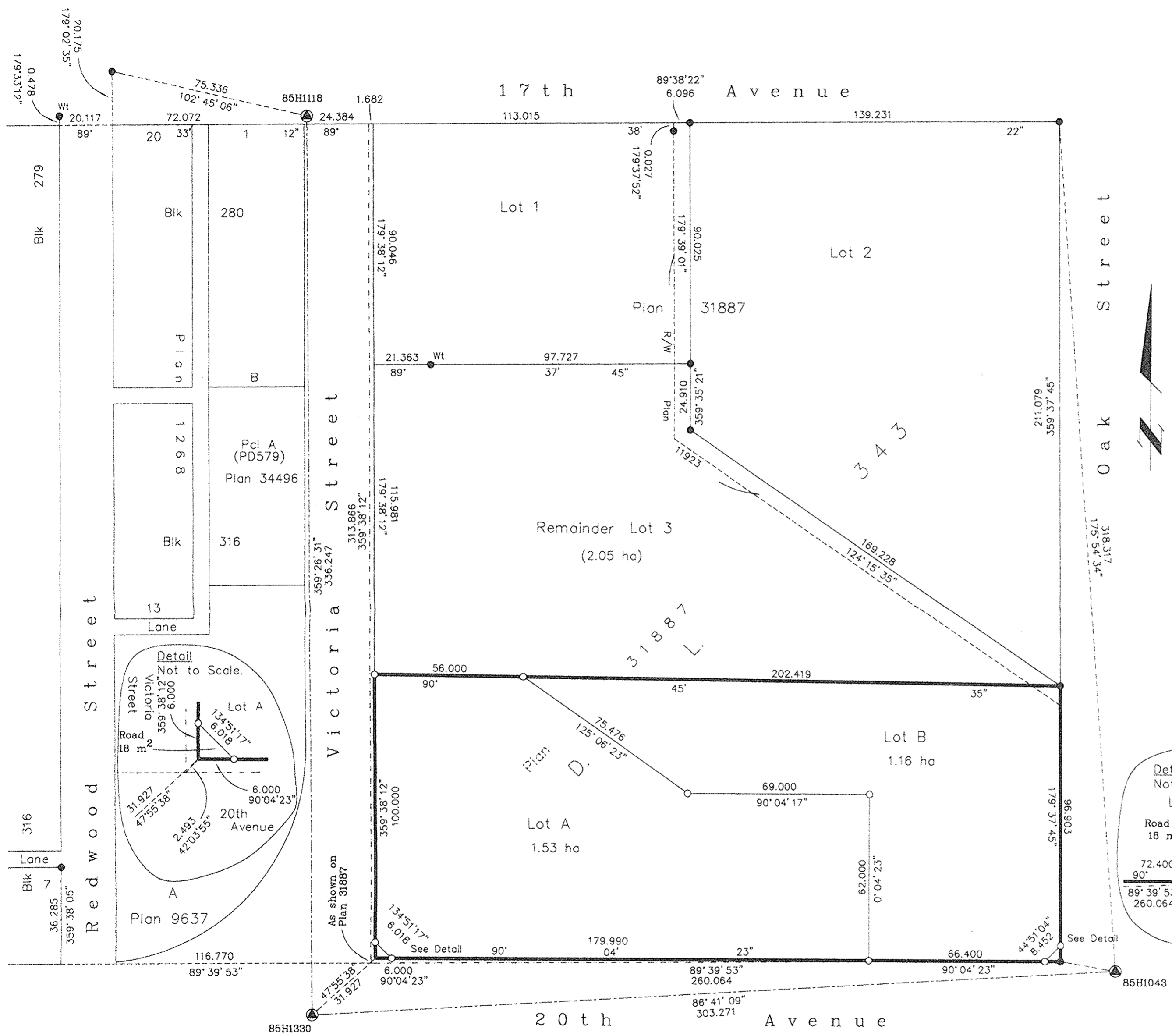


Deposited in the Land Title Office at New Westminster this 30th day of October 2007.

REGISTRAR
BB565512



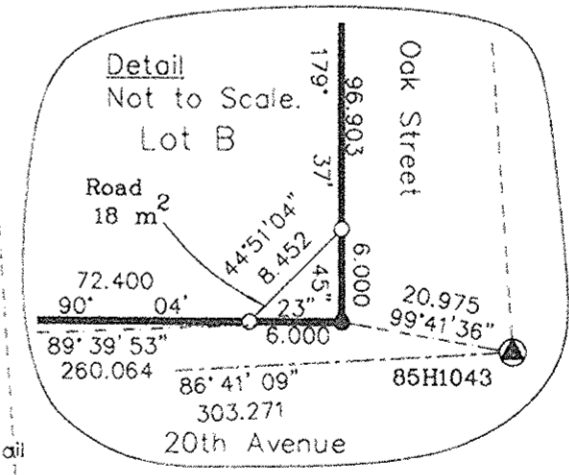
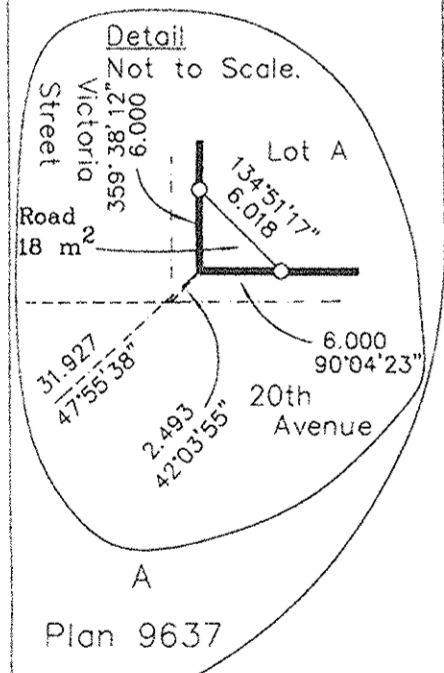
SUBDIVISION PLAN OF PART OF LOT 3, DISTRICT LOT 343, CARIBOO DISTRICT, PLAN 31887. B.C.G.S. 93G.097

Scale: 1 : 1250 (Distances are in metres)

Grid bearings are derived from observations between control monuments 85H1330 and 85H1043, integrated survey area number 39, City of Prince George, B.C. NAD83(CSRS)

Note: This plan shows ground level measured distances. Prior to computation of U.T.M. co-ordinates multiply by the combined factor 0.9995154

LEGEND
 ● Standard Iron Post Found
 ○ Standard Iron Post Placed
 ⊙ Control Monument Found



Owner: City of Prince George
 Authorized Signatory: [Signature]
 Print Name: Ian Wells
 Authorized Signatory: _____
 Print Name: _____

Witness to: [Signature]
 Print Name: Brenda Sieben
 Address: 1100 Patricia Boulevard
Prince George, BC V2L 3V9
 Property Administrator
 Occupation: _____

I, Gordon Kilbride, a British Columbia Land Surveyor, of Prince George, in British Columbia, certify that I was present at and personally superintended the survey represented by this plan, and that the survey and plan are correct. The field survey was completed on the 3rd day of January, 2007. The plan was completed and checked, and the checklist filed under #60865, on the 16th day of February, 2007.

Approved under the Land Title Act this 17 day of October 2007.
[Signature]
 Approving Officer
 City of Prince George

This plan lies within the Fraser-Fort George Regional District.

McElhanney
 McElhanney Associates
 Land Surveying Ltd.
 Prince George, B.C.
 Ph: (250) 561-2229 Fax: 563-1941
 F.B.- XV71\RA D.L.- 343(281) File No. - 5382

[Signature]
 Gordon Kilbride, B.C.L.S.