

REFERENCE PLAN OF EASEMENT OVER
 STRATA LOTS 9 TO 14 INCLUSIVE AND THE COMMON PROPERTY
 OF STRATA PLAN BCS 2593, DISTRICT LOT 905,
 CARIBOO DISTRICT, PLAN BCS 2593

PLAN NO. BCP _____ 33195

Deposited in the Land Title Office at New
 Westminster this 24 day of OCT 2007

Pursuant to Section 99(1)(e)
 of the Land Title Act.

B.C.G.S. 93G.087

Scale: 1 : 500 (Distances are in metres)



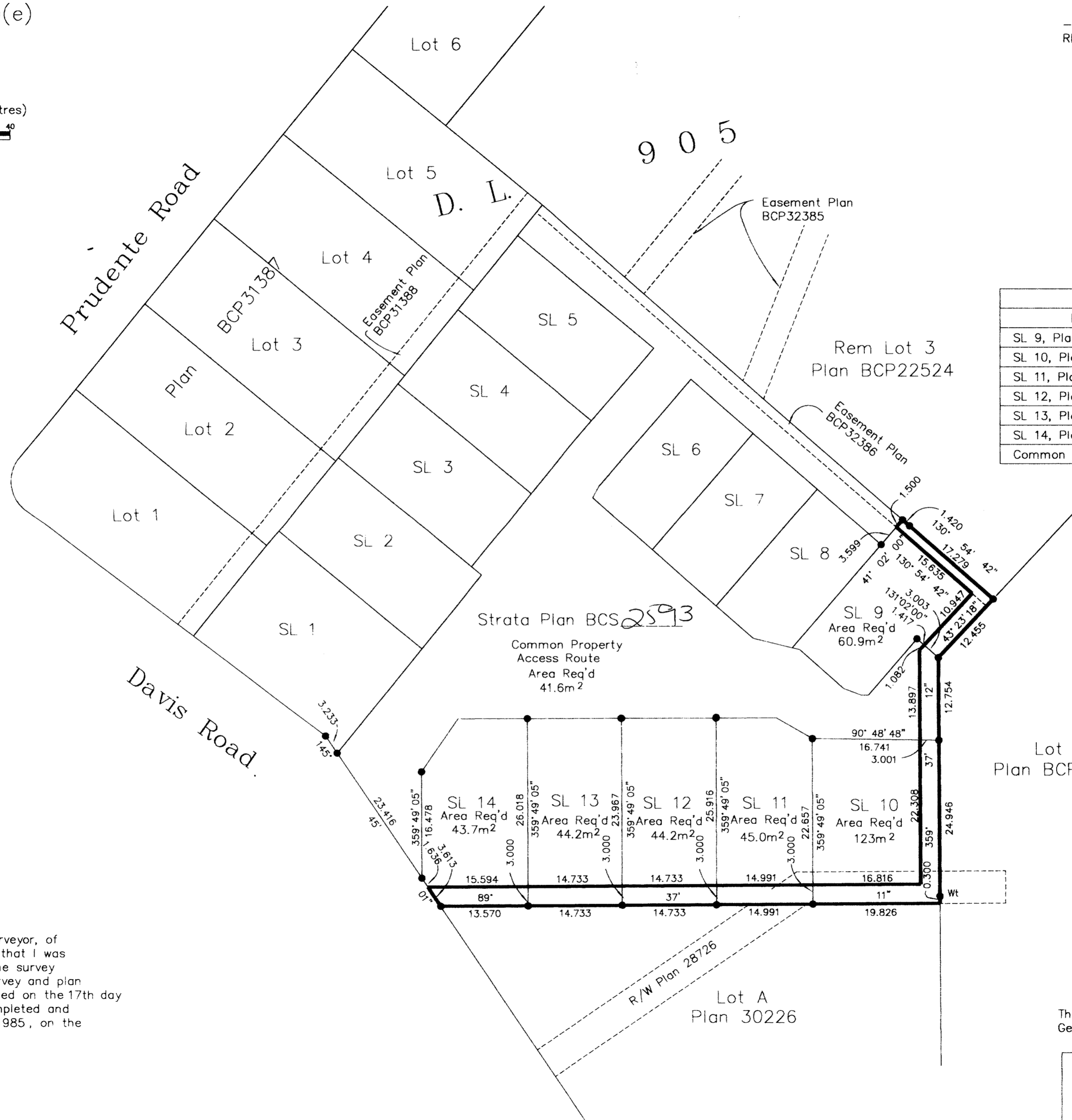
Bearings are astronomic, derived from
 BCP32383

LEGEND

- Standard Iron Post Found
- SL Denotes Strata Lot

REGISTRAR

BB563452



BOOK OF REFERENCE	
DESCRIPTION	AREA
SL 9, Plan BCS <u>2593</u>	60.9m ²
SL 10, Plan BCS _____	123.0m ²
SL 11, Plan BCS _____	45.0m ²
SL 12, Plan BCS _____	44.2m ²
SL 13, Plan BCS _____	44.2m ²
SL 14, Plan BCS _____	43.7m ²
Common Property, Plan BCS _____	41.6m ²



I, Dale Keown, a British Columbia Land Surveyor, of Prince George, in British Columbia, certify that I was present at and personally superintended the survey represented by this plan, and that the survey and plan are correct. The field survey was completed on the 17th day of October, 2007. The plan was completed and checked, and the checklist filed under #71985, on the 18th day of October, 2007.

Dale Keown

Dale Keown, B.C.L.S.

This plan lies within the Fraser-Fort George Regional District.

McElhanney
 McElhanney Associates
 Land Surveying Ltd.

Prince George, B.C.
 Ph: (250) 561-2229 Fax: 563-1941

F.B.- D.L.- 905 File No. - 5537-0E