

REFERENCE PLAN TO ACCOMPANY CITY OF PRINCE GEORGE CLOSURE BYLAW 8035 OF PARK DEDICATED ON PLAN 22967, DISTRICT LOT 2424, CARIBOO DISTRICT, PURSUANT TO SECTION 120 OF THE LAND TITLE ACT AND SECTION 27 OF THE COMMUNITY CHARTER.

B.C.G.S. 93J.006

Scale: 1 : 1250 (Distances are in metres)

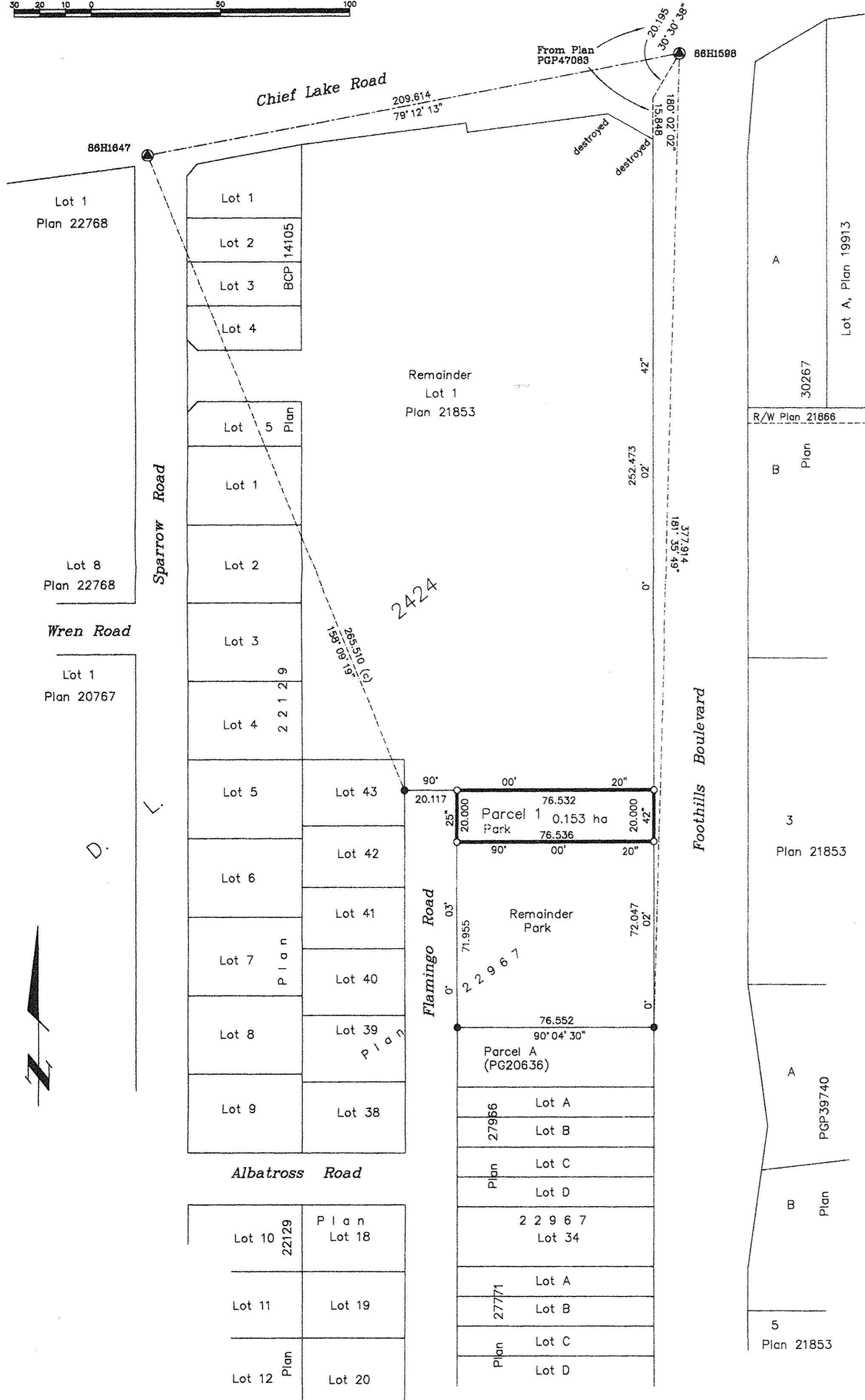


PLAN NO. BCP 32970

Deposited in the Land Title Office at New Westminster this 15 day of Oct, 2007

REGISTRAR

REF. # BB 587156



LEGEND

- Standard Iron Post Found
- Standard Iron Post Placed
- ⊙ Control Monument Found

Note: This plan shows ground level measured distances. Prior to computation of U.T.M. co-ordinates multiply by the combined factor 0.9994838

Grid bearings are derived from observations between control monuments 86H1647 and 86H1598, integrated survey area number 39, City of Prince George, B.C. NAD83(CSRS)

I, Gordon Kilbride, a British Columbia Land Surveyor, of Prince George, in British Columbia, certify that I was present at and personally superintended the survey represented by this plan, and that the survey and plan are correct. The field survey was completed on the 13 day of October, 2005. The plan was completed and checked, and the checklist filed under #70516, on the 17 day of September, 2007.

*Gordon Kilbride*  
Gordon Kilbride, B.C.L.S.

This plan lies within the Fraser-Fort George Regional District.

**KILBRIDE LAND SURVEYING LTD.**  
British Columbia Land Surveyors  
Prince George, B.C.  
Ph: (250) 562-1196 Fax: 562-3656

F.B.- X067 D.L.- 2424 File No. - 050185B